

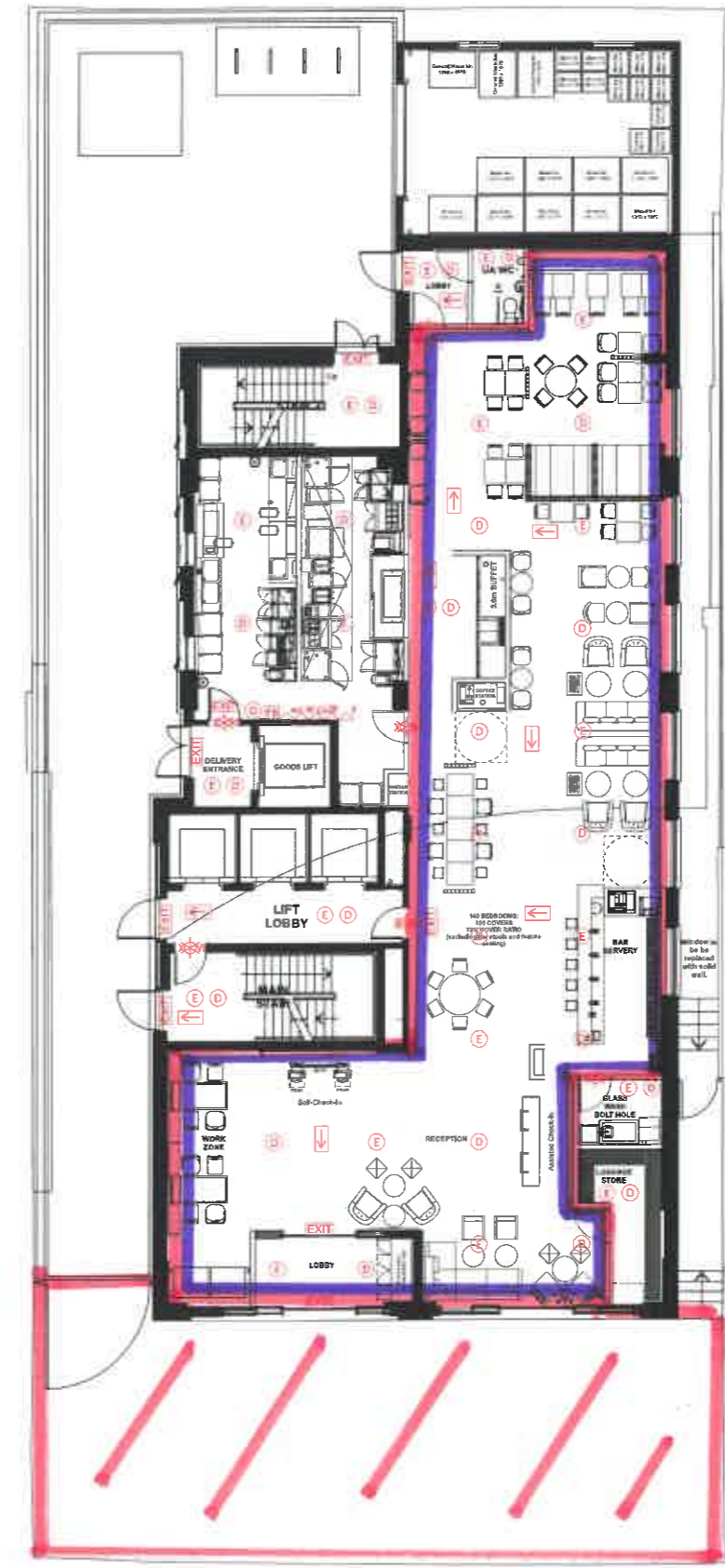
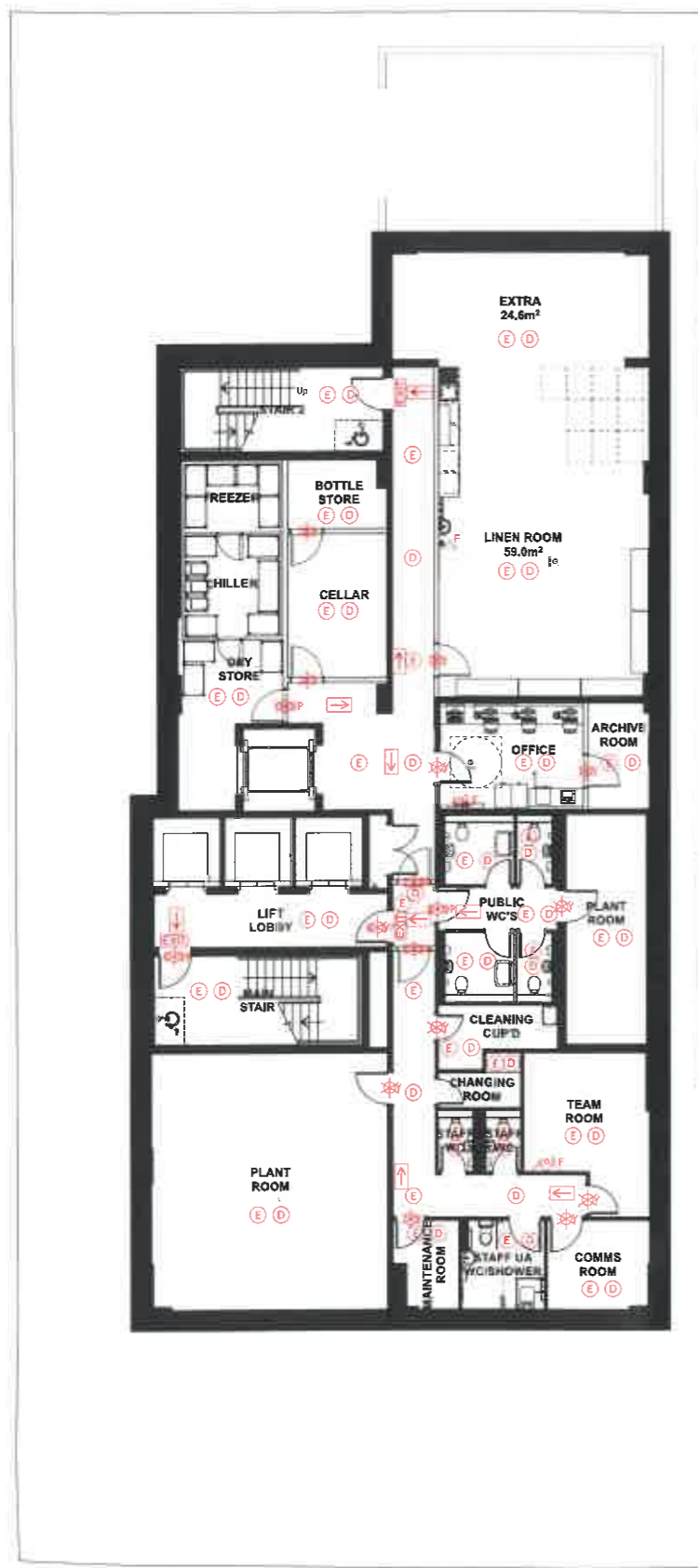
This drawing is the copyright of Axiom Architects. It is for feasibility purposes only and may not be reproduced in whole or in part without permission. The content is subject to site survey and H&S risk assessment. Do not scale from drawings.

**NOTE:**  
 THE FIRE FIGHTING EQUIPMENT SHOWN ON THE PLANS IS INDICATIVE ONLY AS AT THE TIME OF THE PLAN, THERE MAY BE MINOR MODIFICATIONS TO SUCH EQUIPMENT OR IT MAY BE MOVED FROM TIME TO TIME WITH THE AGREEMENT ON THE DIRECTION OF THE FIRE SAFETY OFFICER. THIS SHALL NOT REQUIRE THE PLANS TO BE AMENDED.  
 LICENSABLE ACTIVITIES MAY BE CARRIED OUT IN THE PUBLIC AREAS OF THE PREMISES.  
 ALL STEPS AND STAIRCASES COMPLY WITH THE RELEVANT BUILDING REGULATIONS REQUIREMENTS IN FORCE AT THE TIME THEY WERE INSTALLED.

**KEY**

☐ FIRE ALARM PANEL	⊗ GAS SHUT OFF BUTTON	⊞ VISION PANEL
☐ FIREMANS SWITCH	⊗ DETECTOR	⊞ PUSH BAR TO OPEN
☐ FIRE ALARM SOUNDER (SMALL MOUNTED)	⊞ ILLUMINATED EXIT SIGN	⊞ FOAM EXTINGUISHER
☐ FIRE ALARM SOUNDER (CEILING MOUNTED)	⊞ NON-ILLUMINATED FIRE ESCAPE DIRECTIONAL SIGN	⊞ POWDER EXTINGUISHER
☐ FIRE ALARM CALL POINT WITH FIRE PROCEDURES NOTICE OVER	⊞ HALF HOUR FIRE DOOR	⊞ CARBON DIOXIDE EXTINGUISHER
☐ FIRE BLANKET	⊞ AUTOMATIC FIRE DOOR KEEP CLEAR SIGN, THESE SIGNS HAVE ELECTROMAGNETIC HOLD OPEN DEVICES LINKED TO THE FIRE ALARM	⊞ WATER EXTINGUISHER
☐ FIRE RISER DUCT	⊞ FIRE DOOR KEEP SHUT SIGN	⊞ WET CHEMICAL EXTINGUISHER
☐ EMERGENCY LIGHT	⊞ FIRE DOOR KEEP SHUT SIGN	⊞ FIRE DOOR KEEP LOCKED SIGN
☐ PUSH BUTTON TO EXIT		

- LICENSING KEY**
- ☐ - SALE OF ALCOHOL INTERNALLY
  - ▨ - SALE OF ALCOHOL EXTERNALLY
  - ☐ - PROVISION OF FILMS



Rev	Date	Description	By	Chk

**AXIOM ARCHITECTS**  
 1 Brooklands Yard Southover High Street Lewes East Sussex BN7 1HU  
 Tel. 01273 479434 www.axiomarchitects.co.uk

**Client**  
 WHITBREAD GROUP PLC

**Project**  
 HARROW  
 ST JOHN ROAD  
 PREMIER INN

**Drawing**  
 LICENSING

Scale	Date	Drawn	Checked
1:100 @A1	06/08/23	ARB	ARB

**Drawing No.** 6023-L-001 **Revision**

**6023-L- 001**

**Status**  
 FEASIBILITY