

RCP & LIFE SAFETY NOTES

- All new internal corridor and room door sets are to be minimum of 950mm wide designed to give a clear dimension from face of open door leaf to opposite door jam of 800mm - Building Regulations Part M Compliance.
- New accessible toilet door must be 1000mm overall set Other customer/staff toilets entrance door sets to be a minimum of 950mm wide overall.
- FD30 S VP SC -30min fire door construction (FD30) with intumescent seals including smoke stops (S) with Vision panels (VP and door closure (SC). FD60 doors to be used where stated.
- Vision panels in fire doors to be constructed in pyrobel 12 or swiss flam clear glazing to give 30min protection. Vision panels to be approx 1450mm x 150mm wide extending to within 300mm of door top and 300mm of door bottom and inset by 225mm from open side.
- Doors to kitchen to have high level vision panels with 500mm stainless steel kickplates to base and double sing hinge.
- Door leading from public spaces to back of house to be fitted with electronic access keyppad.
- All fire doors to have self closure devices with 'fire door kept shut' signs fitted to both sides.
- All fire doors not fitted with self closure devices to be fitted with 'FIRE DOOR KEEP SHUT' signage.
- Self closures must be designed to suit door weight and size, but set to an opening strength no greater than 20n.
- IRONMONGERY: Door furniture, handles, kick plates/push plates all to be stainless steel satin finish. See finishes for details.
- Door Finishes: All doors to be decorated on site with 1 coat primer and 2 coats eggshell paint PT03. Architrave PT03 Final fire exit doors to be fitted with emergency release escape ironmongery to PART B Building Regulations and BS 9999. Additional last man out easy release securing device may be fitted in compliance wuth BS 9999, providing that the use is factored into clients risk assesment.

NOTES: Refer to Architect's Flat Type Services Layout drawings xxx series for fire detection within flats.

Drawing to be read in conjunction with latest M&E drawings for fire detection and alarm systems.

Room Area Designation:

- Fire Strategy - Protected corridor/stairway (Communal)
- Smoke vent shaft with automated opening louvres connected to smoke alarm system serving this floor
- Apartment exit route protected by sprinkler suppression system

Partition Ratings:

- 30 Minutes Fire Rated Construction
- 60 Minutes Fire Rated Construction
- 90 Minutes Fire Rated Construction
- 120 Minutes Fire Rated Construction
- 240 Minutes Fire Rated Construction

Fire Door Ratings:

- FD30 Fire Rated Doors - 30 mins.
- FD60 Fire Rated Doors - 60 mins.
- S Fire Rated Doors with intumescent smoke seals
- SC Fire Rated Doors with self closing device

Fire Exit Direction signage:

All signs to conform with BS 5499 Part 1

- Provide 'Fire Door - Keep Shut' signage
- Provide 'Fire Door - Keep Locked' signage
- Emergency Egress window provided for means of escape. Minimum clear opening to be 0.33sqm (450(w) x 450(h)mm) and sill/transom height no greater than 1100.

Fire Cavity Barrier:

- 30 minute Fire Cavity Barriers installed vertically within the external wall cavity providing 30 minute integrity & 15 minute insulation. Refer to NBS Specification.

For Position of Fire Cavity Barrier Refer to Setting Out Plans & Elevations:

- For Ground Floor Cavity Barriers Refer to drawings CHU-CA-A-DR-QF-2030 to 2032
- For First Floor Cavity Barriers Refer to drawings CHU-CA-A-DR-01-2033 to 2035
- For First Floor Cavity Barriers Refer to drawings CHU-CA-A-DR-Q2-2036 to 2038
- For Position of Cavity Barriers in Elevations Refer to drawings CHU-CA-A-DR-XX-3039b 3039

Masonry Cavity Walls-Fire Stopping will be provided horizontally at compartment floor locations fixed back to RC slab edge.

All services passing through 30 minute & 60 minute compartment floors/ ceilings & walls including protected fire escape routes to have the appropriate fire collar, damper, pillows, sealant etc. fitted around them to the same fire resistance as the floor/ ceiling or wall it is passing through. Refer to NBS Specification.

All vertical & horizontal cavity barriers to rainscreen clad external walls to be vented intumescent cavity barrier.

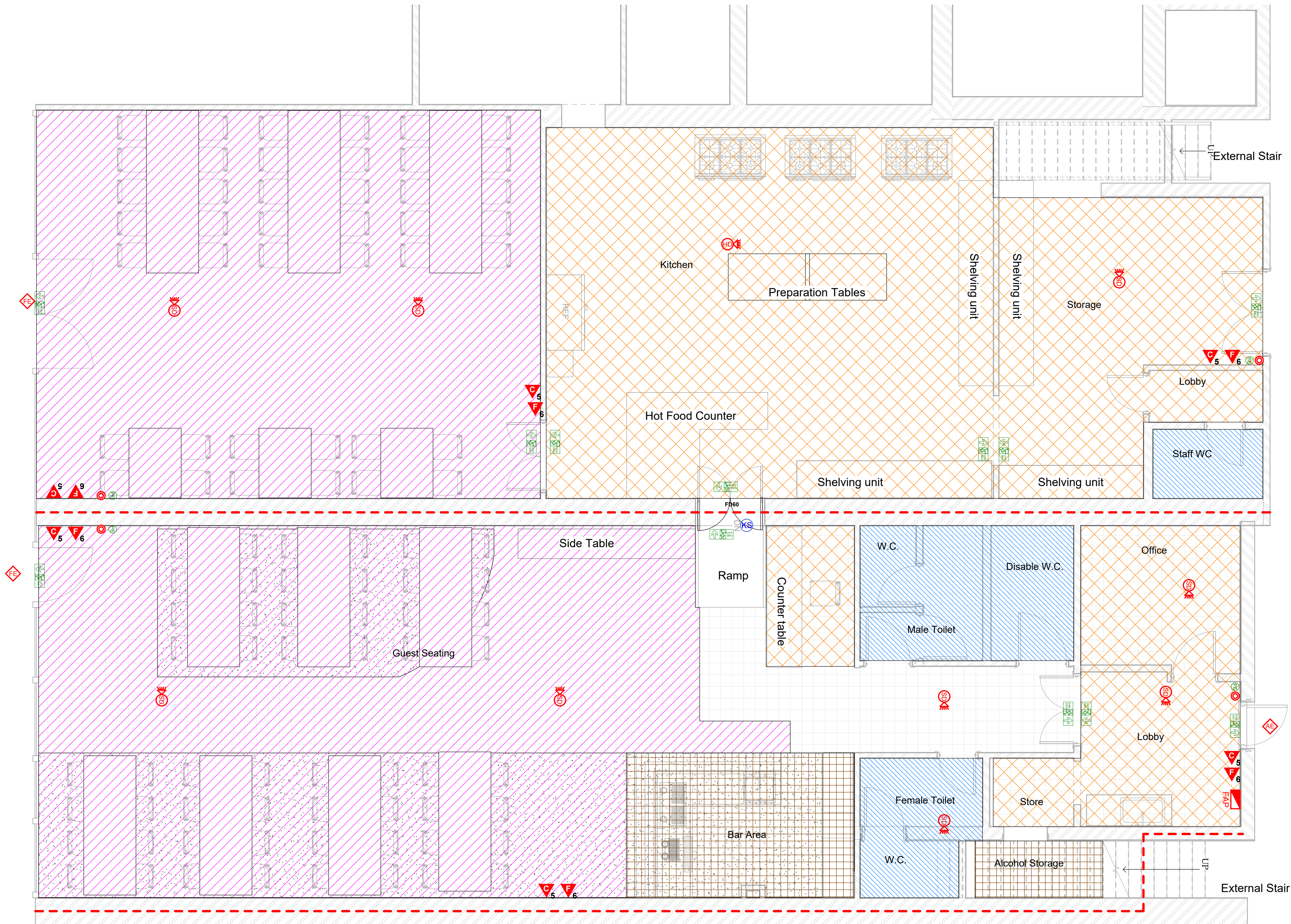
30min. cavity closers to be used around all window, screen & doors set in all external wall constructions.

Fire Symbolology:

- Emergency Egress
- Travel Distance (Escape Route)
- Push to exit button
- Manual Call Point (Break Glass)
- Fire Alarm Master Panel
- Fire Alarm Remote Panel
- Dry Riser Inlet
- Dry Riser Outlet
- Heat Detector
- Smoke Detector
- Heat Detector with built in Sounder
- Smoke Detector with built in Sounder
- Additional Sounder
- Heat Detector with built in Sounder & Flashing Beacon
- Smoke Detector with built in Sounder & Flashing Beacon
- Sprinkler Suppression
- Final Exit
- Storey Exit
- Alternative Exit

Fire Strategy - Extended Fire Symbols:

- Roof Light - Automatic Venting
- Roof Light - Manual Venting
- Roof Ventilator - Automatic Venting
- Roof Ventilator - Manual Venting
- Fire Extinguisher Co2 - 5Kgs
- Fire Extinguisher Foam - 6L
- Fire Extinguisher Powder - 5Kgs
- Fire Extinguisher Water - 6L
- Hazard A Description of Hazard
- Hazard B Description of Hazard
- Fire Blanket
- Hose Reel 600m length



EMERGENCY LIGHTING NOTES

- All emergency lighting to be designed & installed in accordance with BSEN1838 & BS5266(1999)
- All Socket outlets to be RCD protected (Excluding till equipment Power Sockets) at the distribution board.
- Fire Alarm system to be designed in accordance with British Standard 5839 Part 1 & Installed by Approved Contractor.
- All works to conform to current Landlords Fit-out requirements.
- Fire Exit Signage Design & installation must conform to British Standard 5499 part 4-2000.
- Ceiling to be installed on solid supports (not wire) to comply with British Standard 8290 Part 1.
- Any alterations to the fire alarm system will be in accordance with BS5839 Part 1.
- Any alterations to the emergency lighting system will be in accordance with BS5266 Part1.
- All doors/counter flaps on escape routes will be readily openable without the use of a key.
- New ceilings and wall finishes will be surface spread of flame rating of Class O to circulation routes, Class 1 elsewhere, and Class 3 to small rooms.

AREAS LEGEND

- PINK : AREA USED FOR CONSUMPTION OF ALCOHOL
- BROWN : BAR SERVICES & STORAGE OF ALCOHOL
- BLUE : TOILET
- ORANGE SQUARES : STAFF ONLY AREA
- WHITE: CIRCULATION AREAS

FIRE EXTINGUISHERS

- Fire fighting equipment positions are indicative and supplied by client, direct order contractor, including extinguishers, related fire action notices and action point notices.
- Photo illuinescent signage and final emergency and directional signage to comply with BS 5499:1 2002. H&S (Safety signs and signals) regulations 1996.
- Main contractor to provide and fix 20mm chamfered pattress securley to wall/parttion. Overall size 700mm x 450mm, painted to match walls.

Project :156 Kenton Road

Drawing : Ground Floor - Fire Strategy

Scale : As indicated

Status : Construction

Rev :

Date : 31/01/2023

Dwg No : C-30.1

1



ARCHITECTURE / INTERIOR / MANAGEMENT / PLANNING
T: 07870661614 / 07888831314
E: info@designlabslondon.com W: www.designlabslondon.com

© THIS DRAWING IS THE COPYRIGHT OF DESIGNLABS LONDON LTD (DLL). It shall not be in any way used or reproduced or construct without their prior written consent. All dimensions are to be checked on site by client or contractor prior to commencing any work. Work only to figured dimensions. Any discrepancies are to be reported to the DLL in writing and DLL shall not take responsibility for site failing to inform discrepancies.