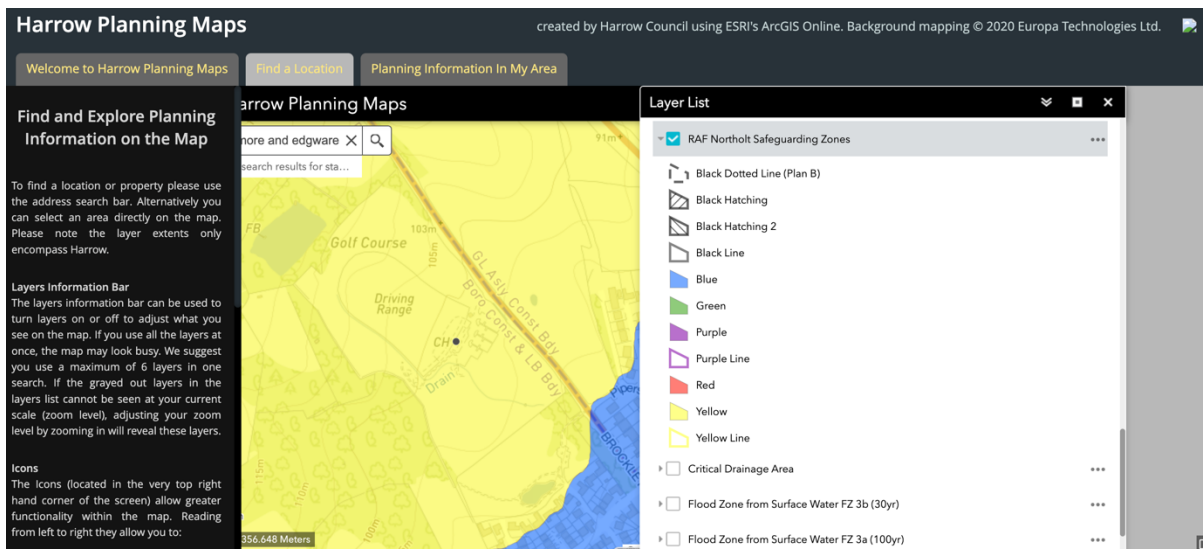
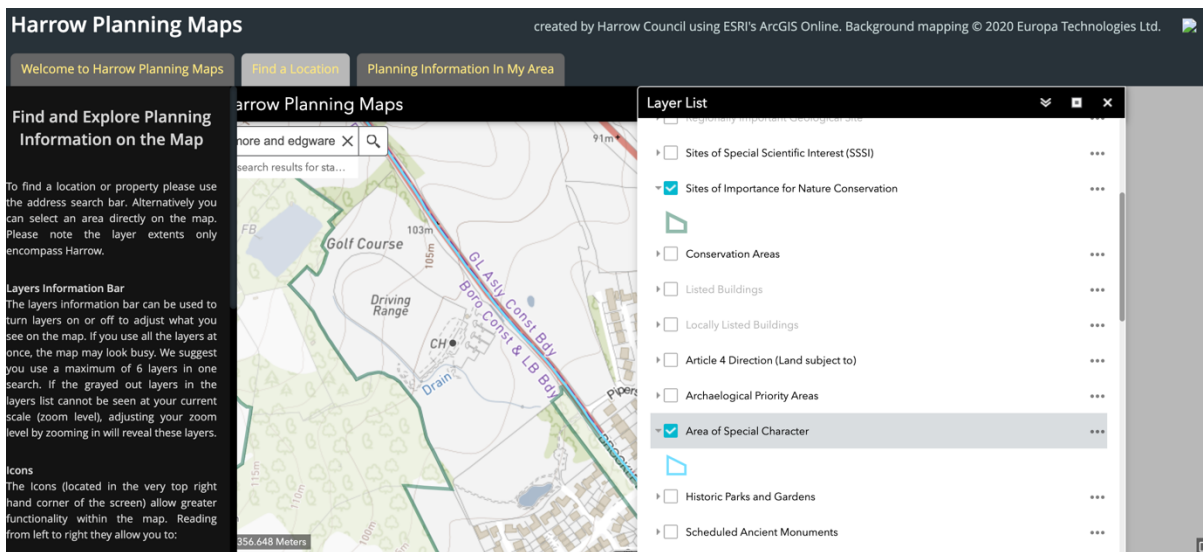
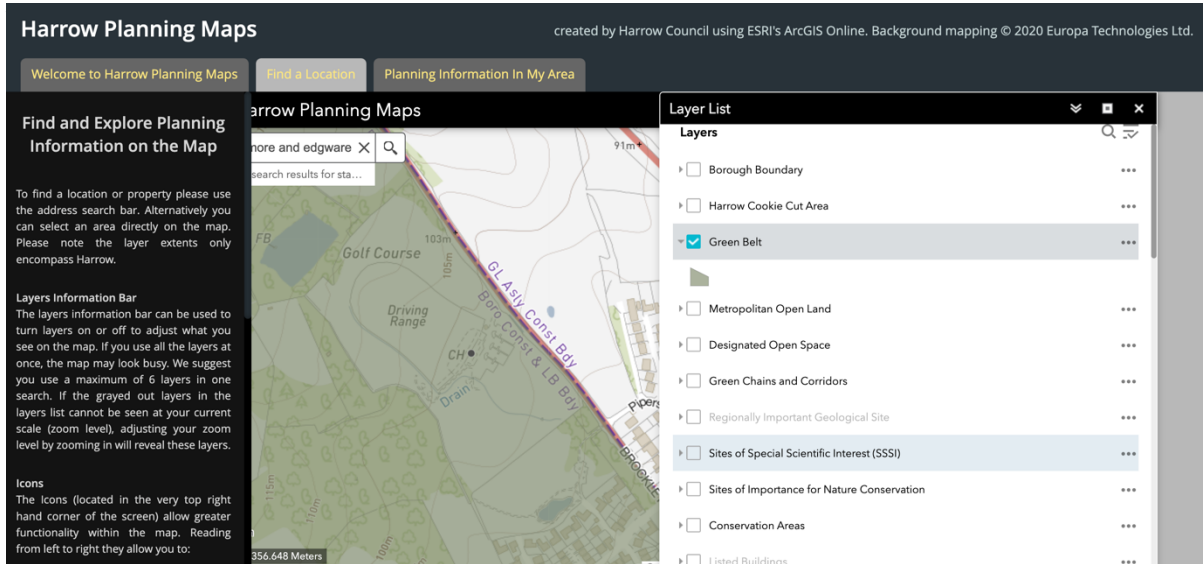


# Harrow policies map

<https://harrow.maps.arcgis.com/apps/MapSeries/index.html?appid=a3f79dc9ba0f4f8e966f99456521cffe>



# Harrow Planning Maps

created by Harrow Council using ESRI's ArcGIS Online. Background mapping © 2020 Europa Technologies Ltd.

Welcome to Harrow Planning Maps | Find a Location | Planning Information In My Area

### Find and Explore Planning Information on the Map

To find a location or property please use the address search bar. Alternatively you can select an area directly on the map. Please note the layer extents only encompass Harrow.

**Layers Information Bar**  
The layers information bar can be used to turn layers on or off to adjust what you see on the map. If you use all the layers at once, the map may look busy. We suggest you use a maximum of 6 layers in one search. If the grayed out layers in the layers list cannot be seen at your current scale (zoom level), adjusting your zoom level by zooming in will reveal these layers.

**Icons**  
The icons (located in the very top right hand corner of the screen) allow greater functionality within the map. Reading from left to right they allow you to:

- open the layers menu
- open the background layers menu
- measure distances and areas

**Layer List**

- Local Plan Site Allocations
- Core Strategy Sub Areas
  - Edgware and Burnt Oak
  - Harrow and Wealdstone
  - Harrow on the Hill and Sudbury
  - Kenton and Belmont
  - Kingsbury and Queensbury
  - North Harrow and Rayners Lane
  - Pinner and Hatch End
  - South Harrow
  - Stanmore and Harrow Weald
  - <all other values>
- Protected Views Restricted Corridor
- Protected Views Setting Corridor
- RAF Northolt Safeguarding Zones
- Critical Drainage Area

# Harrow Planning Maps

created by Harrow Council using ESRI's ArcGIS Online. Background mapping © 2020 Europa Technologies Ltd.

Welcome to Harrow Planning Maps | Find a Location | Planning Information In My Area

### Find and Explore Planning Information on the Map

To find a location or property please use the address search bar. Alternatively you can select an area directly on the map. Please note the layer extents only encompass Harrow.

**Layers Information Bar**  
The layers information bar can be used to turn layers on or off to adjust what you see on the map. If you use all the layers at once, the map may look busy. We suggest you use a maximum of 6 layers in one search. If the grayed out layers in the layers list cannot be seen at your current scale (zoom level), adjusting your zoom level by zooming in will reveal these layers.

**Icons**  
The icons (located in the very top right hand corner of the screen) allow greater functionality within the map. Reading from left to right they allow you to:

- open the layers menu
- open the background layers menu
- measure distances and areas

**Layer List**

- Opportunity Area (Harrow and Wealdstone)
- Local Plan Site Allocations
- Core Strategy Sub Areas
- Protected Views Restricted Corridor
- Protected Views Setting Corridor
- RAF Northolt Safeguarding Zones
- Critical Drainage Area
- Flood Zone from Surface Water FZ 3b (30yr)
- Risk\_of\_Flooding\_from\_Surface\_Water\_Extent\_3\_3\_percent\_annual\_chance
- Flood Zone from Surface Water FZ 3a (100yr)
- Risk\_of\_Flooding\_from\_Surface\_Water\_Extent\_1\_percent\_annual\_chance
- EA Flood Zone 3
- EA Flood Zone 2
- All Layers - when zoomed in

# Harrow Planning Maps

created by Harrow Council using ESRI's ArcGIS Online. Background mapping © 2020 Europa Technologies Ltd.

Welcome to Harrow Planning Maps | Find a Location | Planning Information In My Area

### Find and Explore Planning Information on the Map

To find a location or property please use the address search bar. Alternatively you can select an area directly on the map. Please note the layer extents only encompass Harrow.

**Layers Information Bar**  
The layers information bar can be used to turn layers on or off to adjust what you see on the map. If you use all the layers at once, the map may look busy. We suggest you use a maximum of 6 layers in one search. If the grayed out layers in the layers list cannot be seen at your current scale (zoom level), adjusting your zoom level by zooming in will reveal these layers.

**Icons**  
The icons (located in the very top right hand corner of the screen) allow greater functionality within the map. Reading from left to right they allow you to:

- open the layers menu
- open the background layers menu

**Layer List**

- Listed Buildings
- Locally Listed Buildings
- Article 4 Direction (Land subject to)
- Archaeological Priority Areas
- Area of Special Character
- Historic Parks and Gardens
- Scheduled Ancient Monuments
- Tree Preservation Order (individual)
- Tree Preservation Area Orders
- Tree Preservation Orders Groups and Woodlands
- Town Centre Boundaries
- Primary Shopping Area