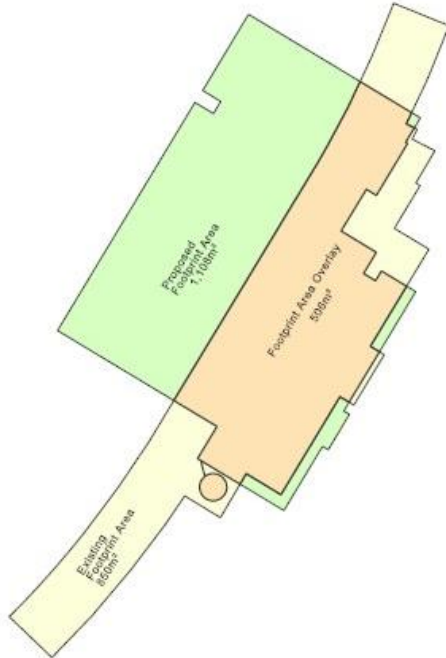


APPENDIX: IMAGES, DIAGRAMS AND PRECEDENTS

FIGURE 1

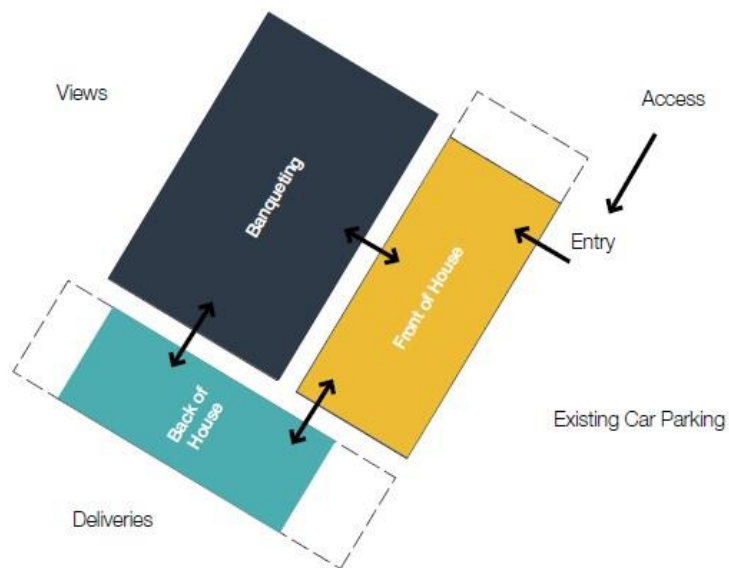
Footprint comparison



Source: Appellant's DAS

FIGURE 2

Adjacencies diagram



Source: Appellant's DAS

FIGURE 3

Ground Floor Plan showing Function Hall with tables arrangement



Source: Appellant's DAS

FIGURE 4

Wengut Högl winery in context (black and white building to the bottom left of image)



Source: architizer.com

FIGURE 5

Stealth Barn in context (all black building to the right of image)



Source: dezeen.com

FIGURE 6

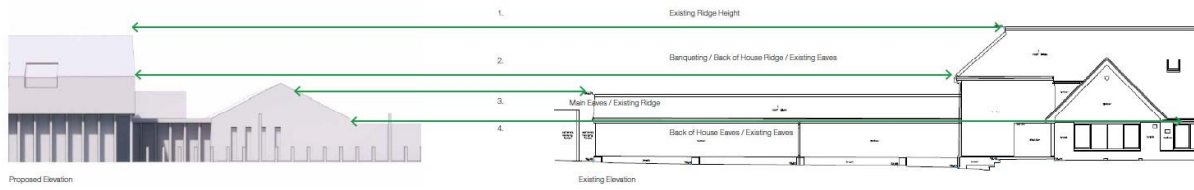
House in Krostoszwice in context (black and white building to the bottom left of image)



Source: architectmagazine.com

FIGURE 7

To the left is the appellant's scheme and to the right is the former golf club house building



Source: Appellant's DAS

FIGURE 8

Former golf clubhouse building



Source: Appellant's Statement of Case Appendix 1

FIGURE 9

Headstone Manor



Source: headstonemanor.org

FIGURE 10

West Elevation showing balcony on first floor



Source: Appellant's DAS

FIGURE 11

LVIA Viewpoint 1



Source: Appellant's LVIA

FIGURE 12

LVIA Viewpoint 2



Source: Appellant's LVIA

FIGURE 13

Former golf club house view of entrance to site



Source: Appellant's Statement of Case Appendix 1

FIGURE 14

AVR of proposal as seen from Brockley Hill



Source: Appellant's Supplementary Openness and Landscape Assessment

FIGURE 15

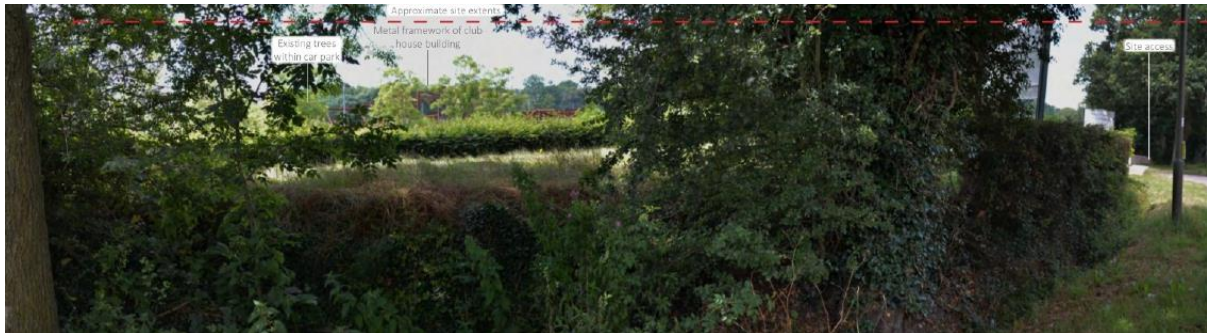
Current view from Brockley Hill (August 2022)



Source: Author

FIGURE 16

LVIA Viewpoint 3



Source: Appellant's LVIA

FIGURE 17

LVIA Image B



Source: Appellant's LVIA

FIGURE 18

View from east of site showing residual structure and overgrown golf course



Source: Author

FIGURE 19

Image N



Source: Appellant's Supplementary Openness and Landscape Assessment

FIGURE 20

Openness maintained by residual structure not obstructing tree line (dashed red line)



Source: Author

FIGURE 21

Landscape Strategy



Source: Appellant's Landscape Strategy Plan