

PROOF OF EVIDENCE

Sairam (Holdings) Ltd

Stanmore and Edgware Golf Centre

Brockley Hill

September 2022

Proof Of Evidence of David Bird BSc, CEng, MICE
On Transport Issues

Volume 2 – Figures and Appendices

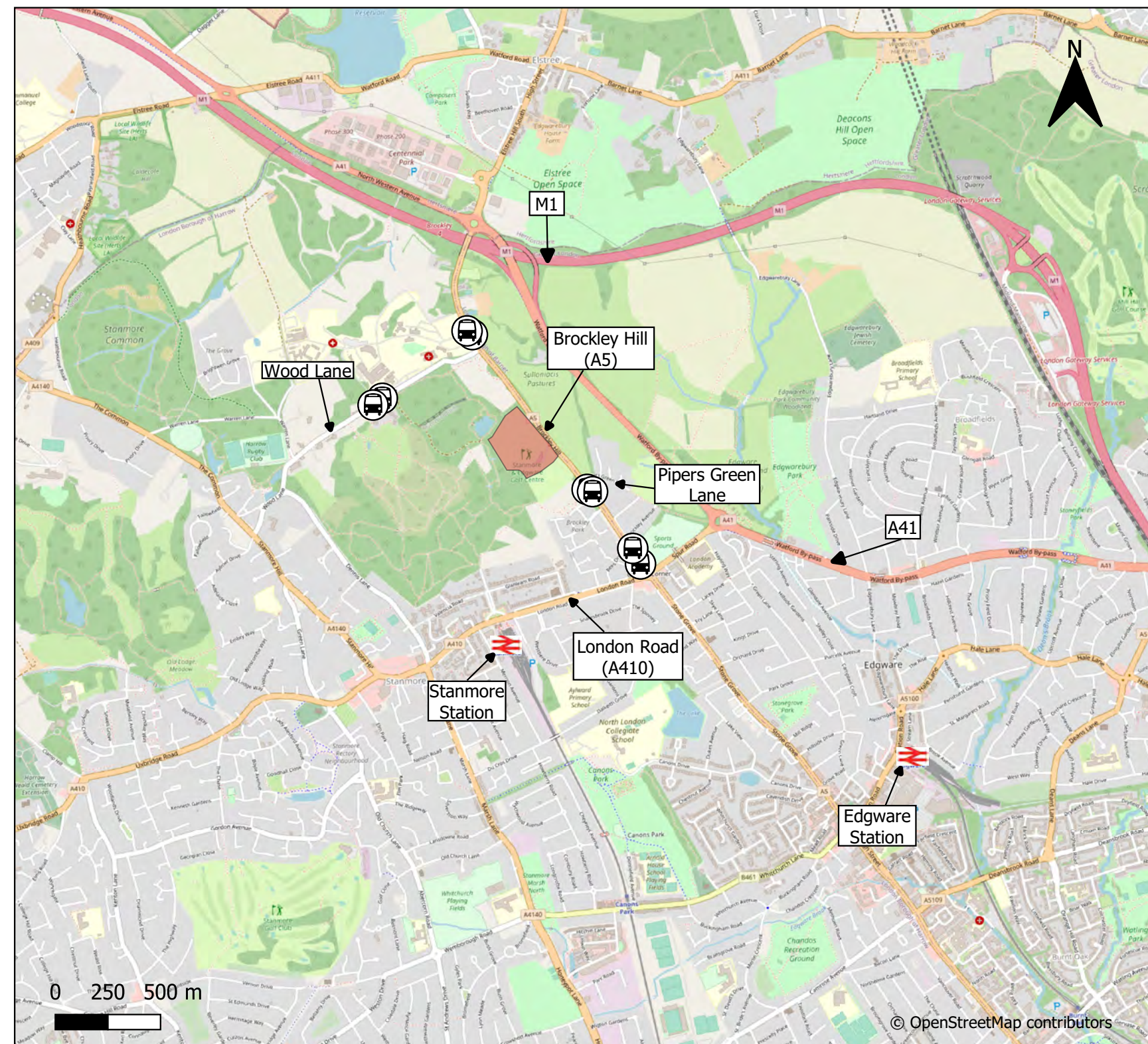
Figures




- Figure 2.1 – Strategic Site Location
- Figure 2.2 – Local Site Location
- Figure 2.3 – 2km Walking Isochrone
- Figure 2.4 – 8km Cycling Isochrone

Appendices

- Appendix A – Standard Car Parking Layout
- Appendix B – Valet Car Parking Layout
- Appendix C – Coach Tracking
- Appendix D – Site Travel Surveys
- Appendix E – Chantry Statement of Intent
- Appendix F – ValetParked Statement of Intent

Figures



- Key
-  Site location
 -  Bus Stops
 -  Underground Station

Sairam (Holdings) Ltd

Stategic Site Location

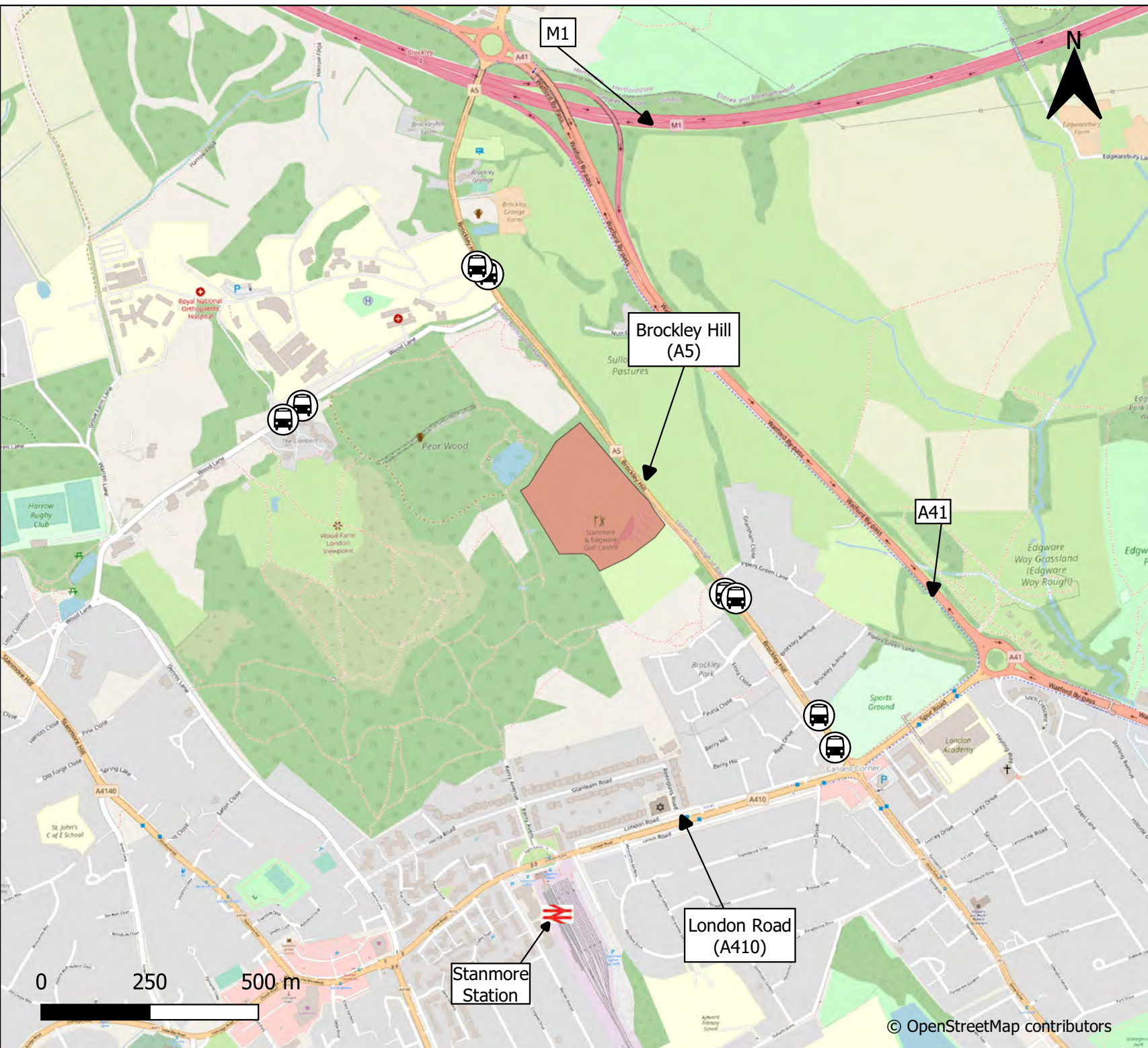
Stanmore and Edgware Golf Centre

vectos.

— PART OF SLR 

Drawn By: Checked By: 13/09/2022

GK HA Figure 2.1



- Key
- Site location
 - Bus Stops
 - Underground Station

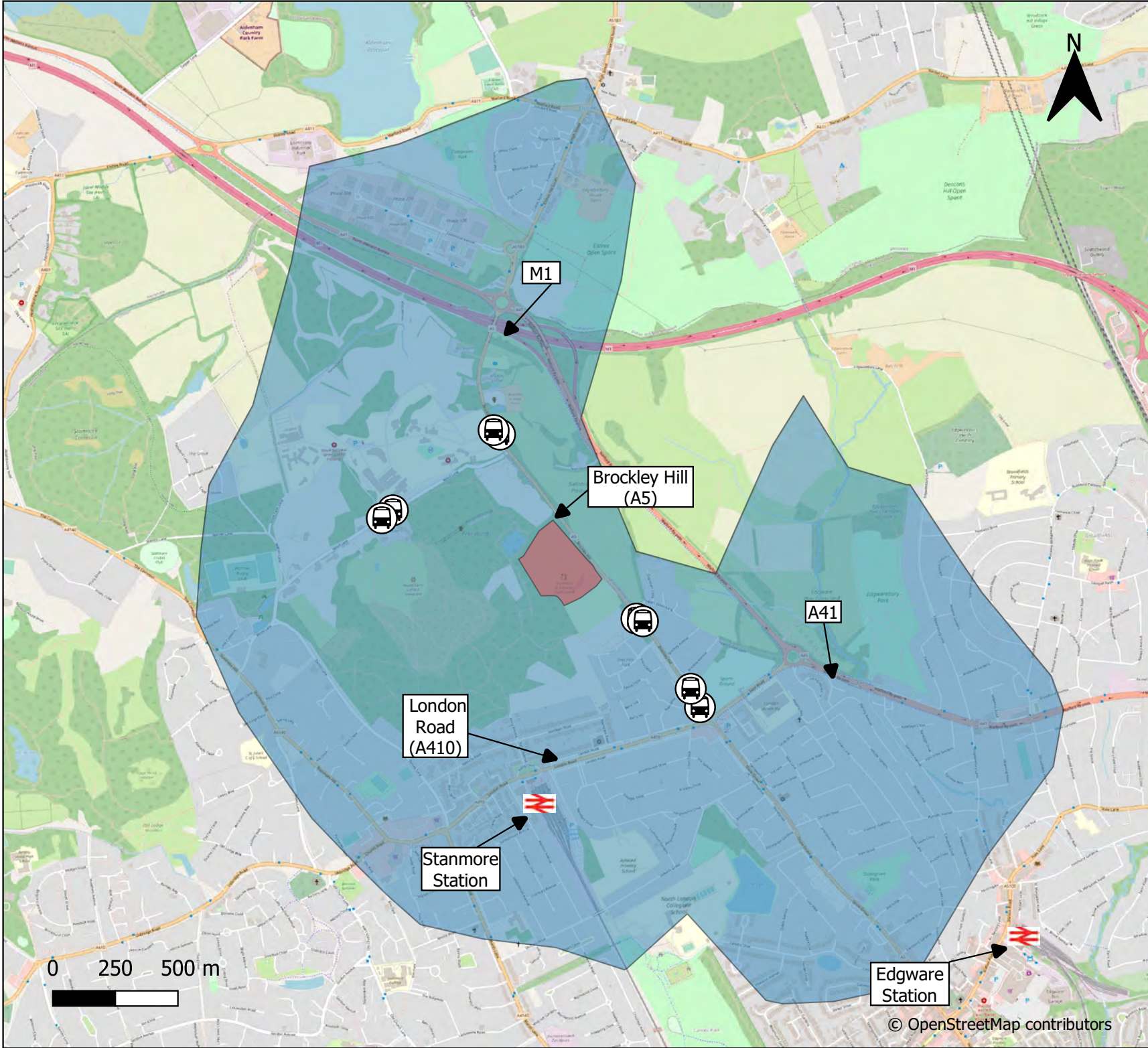
Sairam (Holdings) Ltd

Local Site Location

Stanmore and Edgware Golf Centre



Drawn By: GK Checked By: HA 13/09/2022
 Figure 2.2



- Key**
- Site location
 - Bus Stops
 - Underground Station
 - 2km Walking Isochrones**
 - 2000 m

Sairam (Holdings) Ltd

2km Walking Isochrone

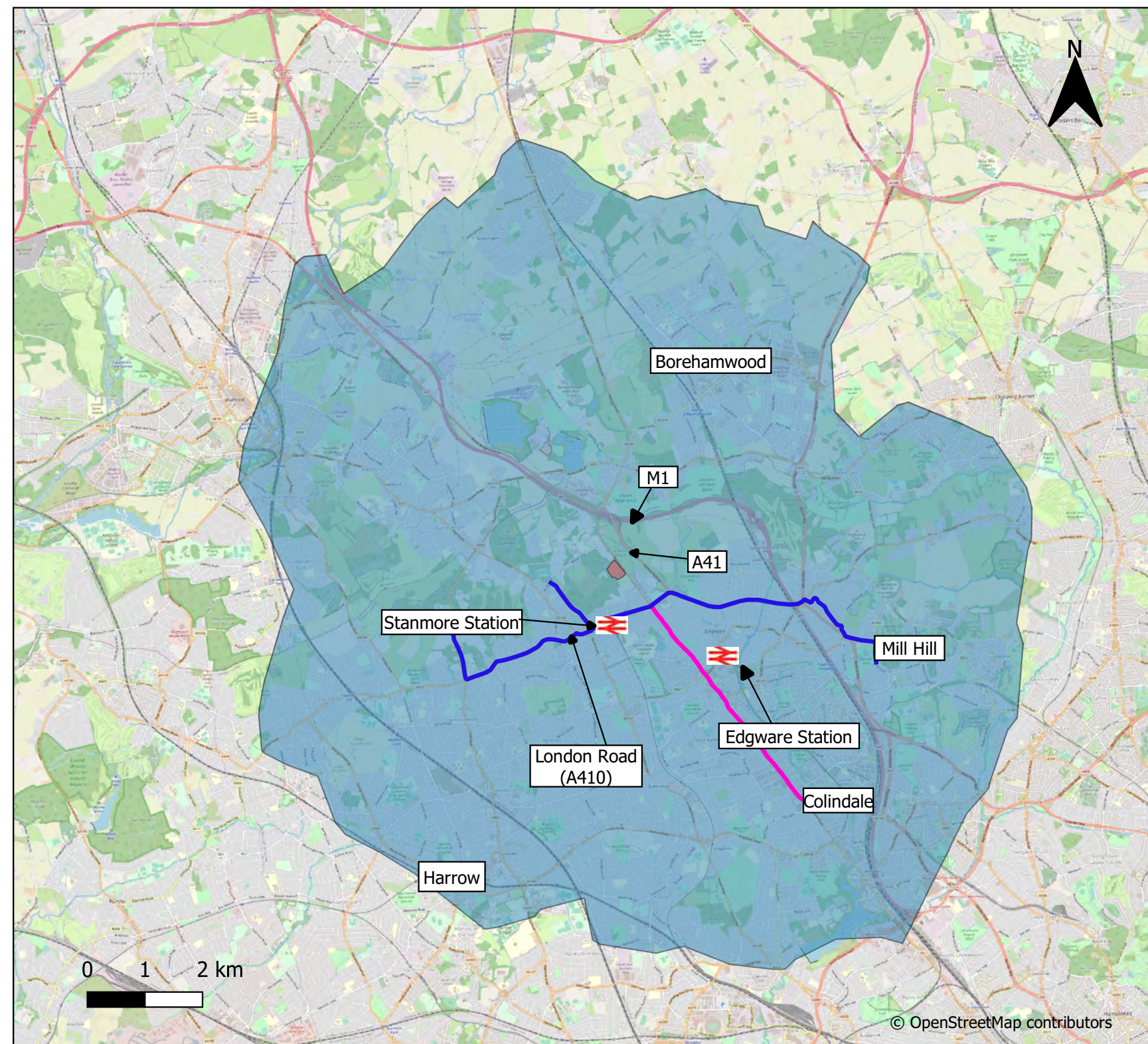
Stanmore and Edgware Golf Centre

vectos.

— PART OF **SLR**

Drawn By: GK Checked By: HA 13/09/2022
 Figure 2.3

© OpenStreetMap contributors



- Key**
- Site location
 - Underground Station
 - 8km Cycling Isochrone**
 - 8000 m
 - Cycle route 5
 - Cycle route 89

Sairam (Holdings) Ltd

8km Cycling Isochrone

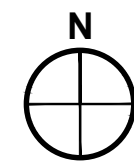
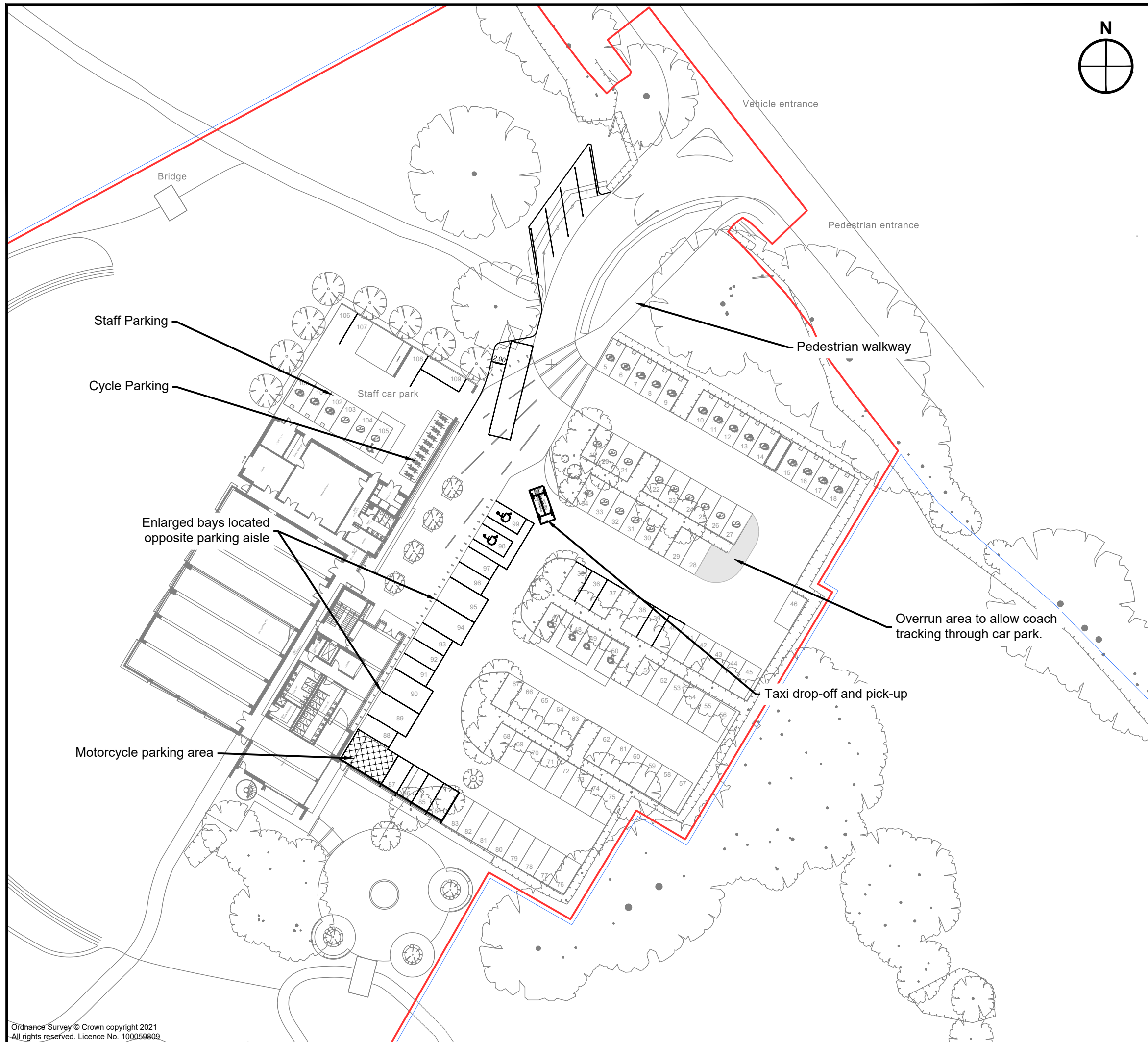
Stanmore and Edgware Golf Centre

vectos.

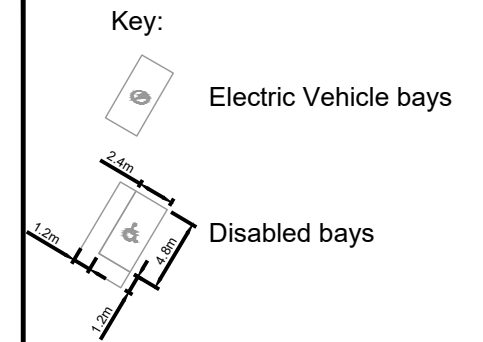
— PART OF **SLR**

Drawn By: Checked By: 13/09/22
 GK HA Figure 2.4

Appendix A



Notes:
 1. This is not a construction drawing and is intended for illustrative purposes only
 2. White lining is indicative only.



Bay count
 Standard : 93
 Enlarged: 4
 Disabled: 7
 Staff: 5
 Total = 109

C	Updates to layout.	TF	DB	09.09.2022
B	Updates to layout.	TF	DB	31.08.2022
A	Updates to layout.	TF	DB	23.08.2022

REV.	DETAILS	DRAWN	CHECKED	DATE
------	---------	-------	---------	------

STATUS:
FINAL

CLIENT:
Sairam (Holdings) Ltd

PROJECT:
Stanmore and Edgware Golf Centre, Brockley Hill, Stanmore

DRAWING TITLE:
Car Park Standard Layout

SCALES:
1:500 at A3

DRAWN:	TF	CHECKED:	DB	DATE:	18.08.2022
--------	----	----------	----	-------	------------



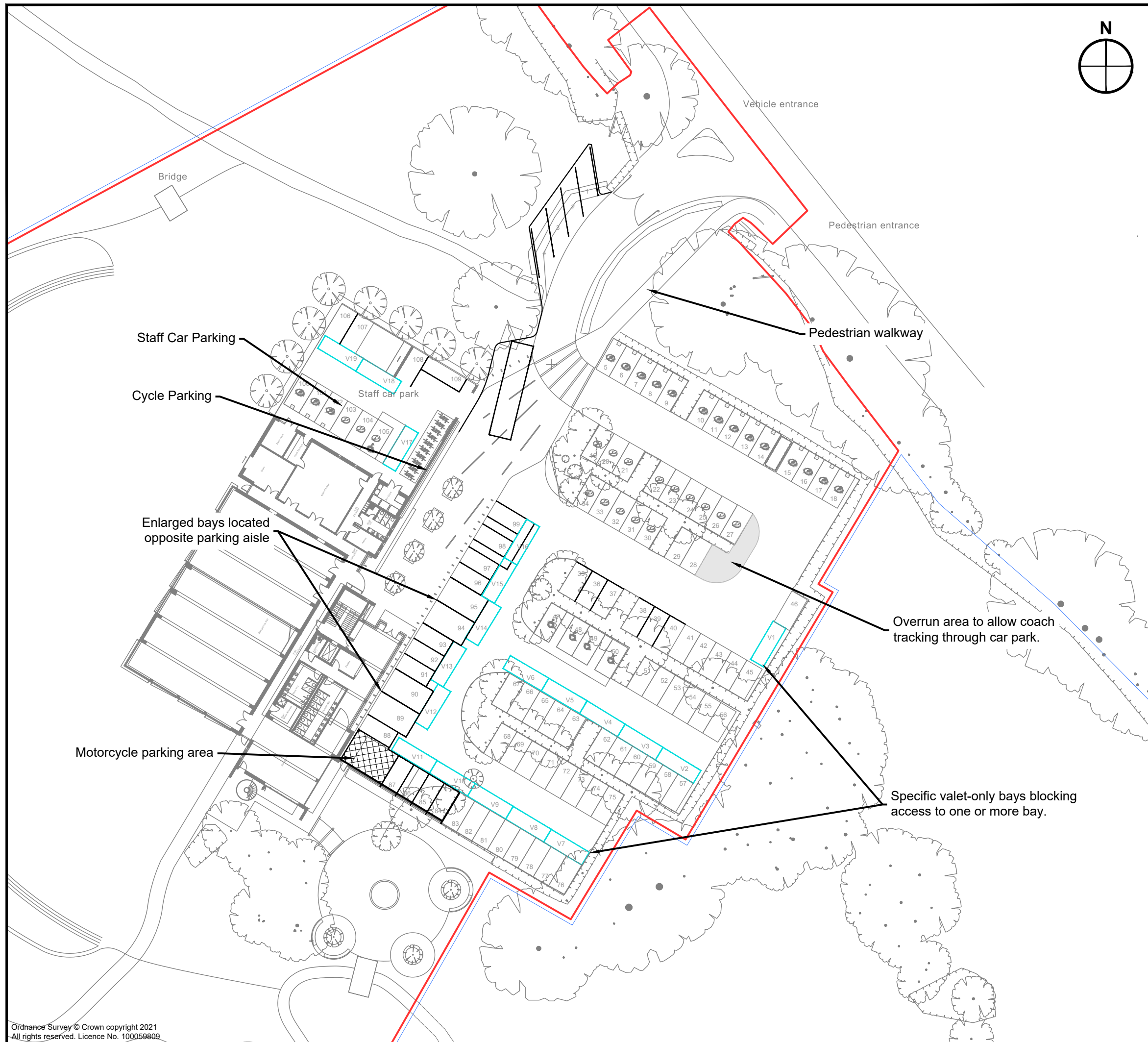
The Cursitor, 38 Chancery Lane, London, WC2A 1EN
 020 7580 7373
 vectos@vectos.co.uk

DRAWING NUMBER: **226759/PD01** REVISION: **C**

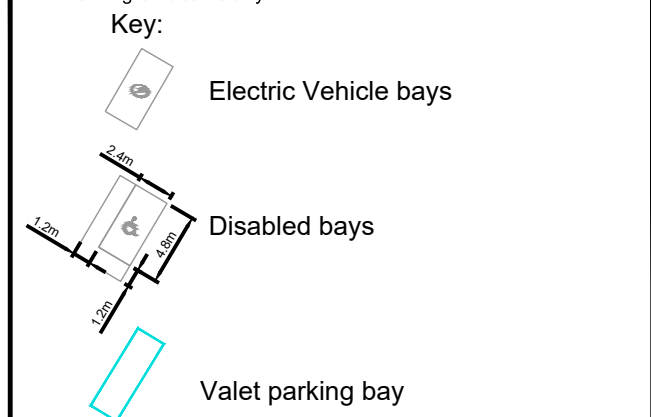
Ordnance Survey © Crown copyright 2021
 All rights reserved. Licence No. 100059809

NOTE: THE PROPERTY OF THIS DRAWING AND DESIGN IS VESTED IN VECTOS (SOUTH) LTD.
 IT MUST NOT BE COPIED OR REPRODUCED IN ANY WAY WITHOUT THEIR PRIOR WRITTEN CONSENT.

Appendix B



Notes:
 1. This is not a construction drawing and is intended for illustrative purposes only.
 2. White lining is indicative only.



Bay count

Standard	: 93
Enlarged	: 4
Disabled	: 7
Staff	: 5
Valet	: 19
Total	= 128

C	Updates to layout.	TF	DB	09.09.2022
B	Updates to layout.	TF	DB	31.08.2022
A	Updates to layout.	TF	DB	23.08.2022

REV.	DETAILS	DRAWN	CHECKED	DATE
------	---------	-------	---------	------

STATUS: **FINAL**

CLIENT: **Sairam (Holdings) Ltd**

PROJECT: **Stanmore and Edgware Golf Centre, Brockley Hill, Stanmore**

DRAWING TITLE: **Car Park Valet Layout**

SCALES: **1:500 at A3**

DRAWN: TF	CHECKED: DB	DATE: 18.08.2022
-----------	-------------	------------------

vectos. | PART OF **SLR**

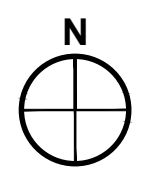
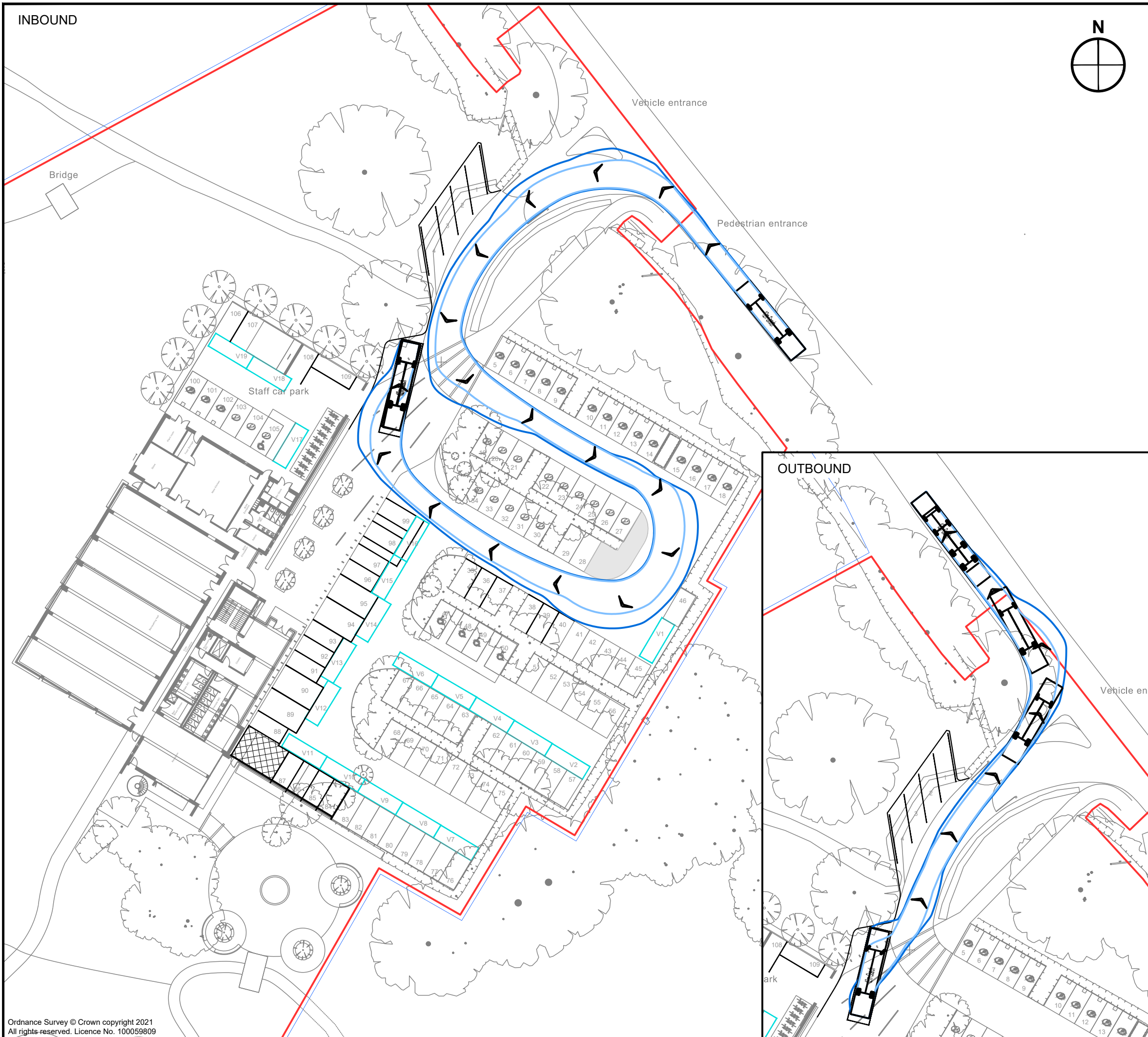
The Cursitor, 38 Chancery Lane, London, WC2A 1EN
 020 7580 7373 | vectos@vectos.co.uk

DRAWING NUMBER: **226759/PD02** REVISION: **C**

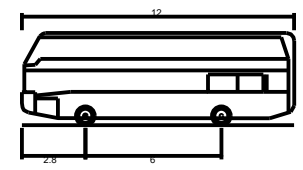
Ordnance Survey © Crown copyright 2021
 All rights reserved. Licence No. 100059809

NOTE: THE PROPERTY OF THIS DRAWING AND DESIGN IS VESTED IN VECTOS (SOUTH) LTD.
 IT MUST NOT BE COPIED OR REPRODUCED IN ANY WAY WITHOUT THEIR PRIOR WRITTEN CONSENT.

Appendix C



Notes:
 1. This is not a construction drawing and is intended for illustrative purposes only
 2. White lining is indicative only.



12m Coach
 Overall Length 12.000m
 Overall Width 2.550m
 Overall Body Height 4.069m
 Min Body Ground Clearance 0.308m
 Track Width 2.350m
 Lock to lock time 4.00s
 Wall to Wall Turning Radius 10.771m

REV.	DETAILS	DRAWN	CHECKED	DATE
A	12m coach added	JB	DB	09.09.2022

STATUS: **FINAL**

CLIENT: **Sairam (Holdings) Ltd**

PROJECT: **Stanmore and Edgware Golf Centre, Brockley Hill, Stanmore**

DRAWING TITLE: **Swept Path Analysis
 Car Park - Valet Layout
 12m Coach**

SCALES: **1:500 at A3**

DRAWN: TF	CHECKED: DB	DATE: 31.08.2022
-----------	-------------	------------------

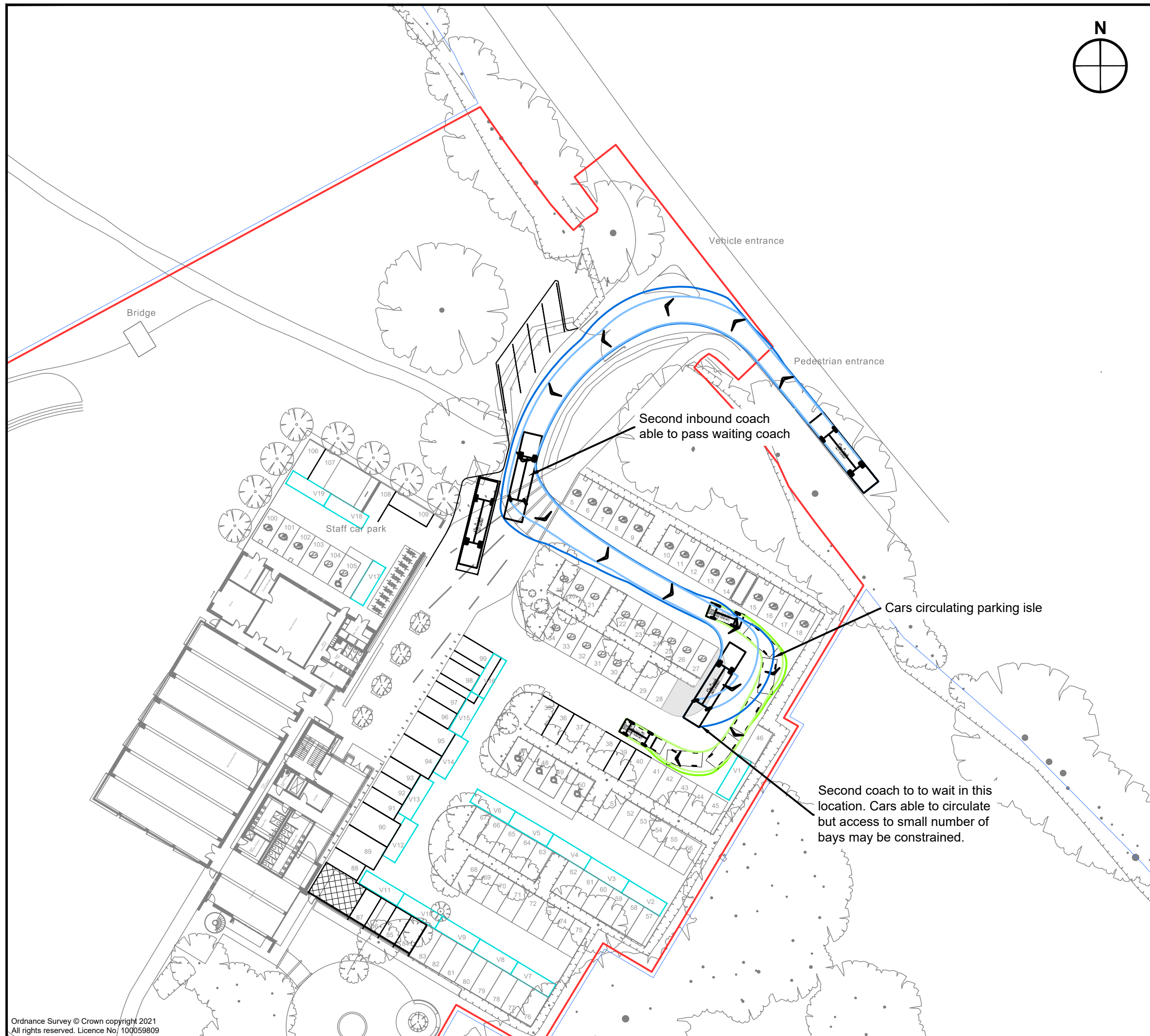
vectos. | PART OF **SLR**

The Cursitor, 38 Chancery Lane, London, WC2A 1EN
 020 7580 7373 vectos@vectos.co.uk

DRAWING NUMBER: **226759/AT/A01** REVISION: **A**

Ordnance Survey © Crown copyright 2021
 All rights reserved. Licence No. 100059809

NOTE: THE PROPERTY OF THIS DRAWING AND DESIGN IS VESTED IN VECTOS (SOUTH) LTD.
 IT MUST NOT BE COPIED OR REPRODUCED IN ANY WAY WITHOUT THEIR PRIOR WRITTEN CONSENT.



Notes:
 1. This is not a construction drawing and is intended for illustrative purposes only
 2. White lining is indicative only.

REV.	DETAILS	DRAWN	CHECKED	DATE
A	Updates to layout	TF	DB	09.09.2022

STATUS:
FINAL

CLIENT:
Sairam (Holdings) Ltd

PROJECT:
Stanmore and Edgware Golf Centre, Brockley Hill, Stanmore

DRAWING TITLE:
**Swept Path Analysis
 Car Park - Valet Layout
 2 x 12m Coach**

SCALES:
1:500 at A3

DRAWN: TF CHECKED: DB DATE: 31.08.2022

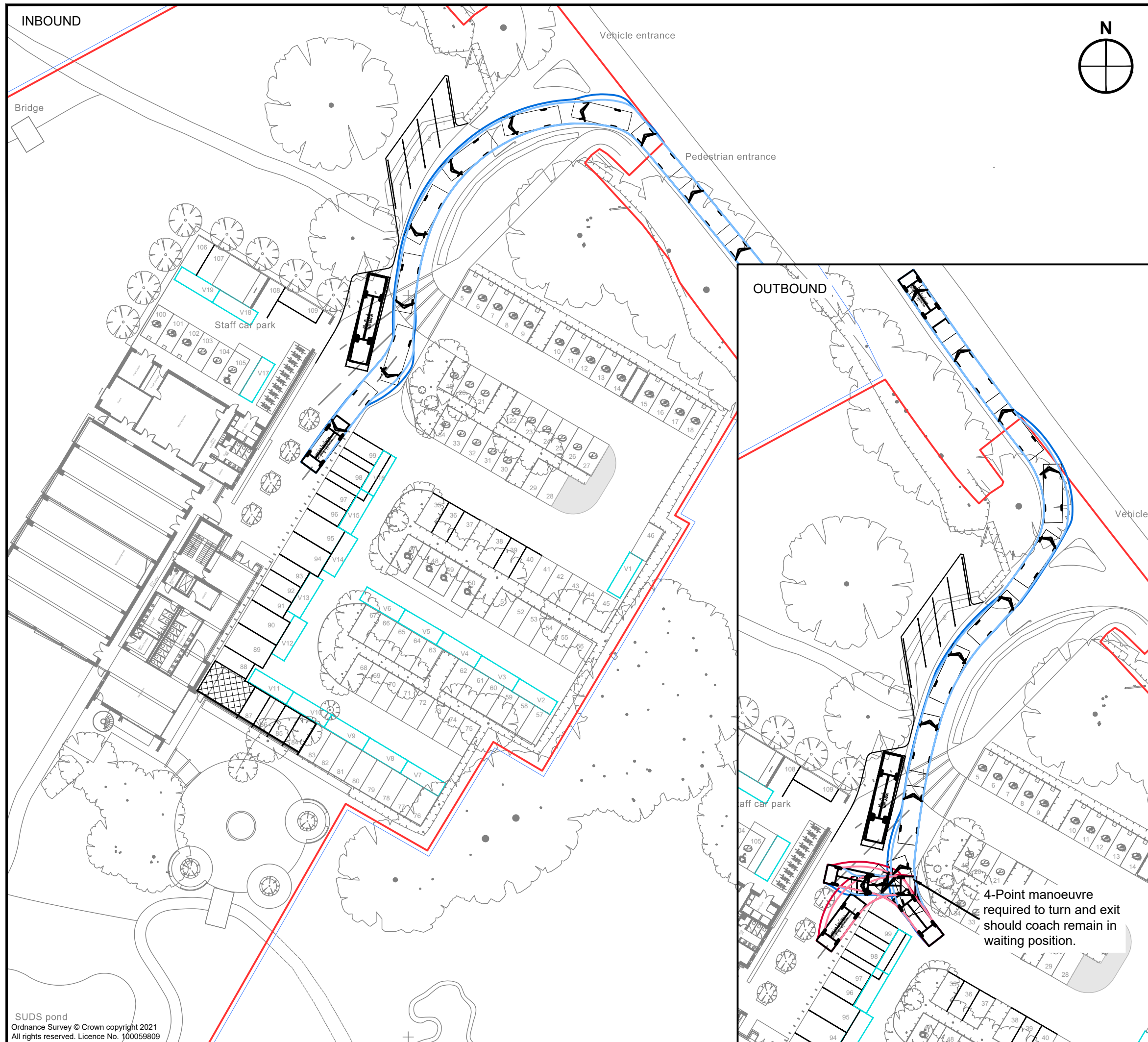


The Cursitor, 38 Chancery Lane, London, WC2A 1EN
 020 7580 7373 vectos@vectos.co.uk

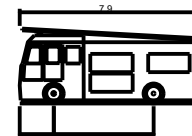
DRAWING NUMBER: **226759/AT/A02** REVISION: **A**

Ordnance Survey © Crown copyright 2021
 All rights reserved. Licence No. 100059809

NOTE: THE PROPERTY OF THIS DRAWING AND DESIGN IS VESTED IN VECTOS (SOUTH) LTD.
 IT MUST NOT BE COPIED OR REPRODUCED IN ANY WAY WITHOUT THEIR PRIOR WRITTEN CONSENT.



Notes:
 1. This is not a construction drawing and is intended for illustrative purposes only
 2. White lining is indicative only.



Pumping Appliance
 Overall Length 7.900m
 Overall Width 2.500m
 Overall Body Height 3.300m
 Min Body Ground Clearance 0.140m
 Track Width 2.500m
 Lock to lock time 4.00s
 Kerb to Kerb Turning Radius 7.750m

REV.	DETAILS	DRAWN	CHECKED	DATE

STATUS:
FINAL

CLIENT:
Sairam (Holdings) Ltd

PROJECT:
Stanmore and Edgware Golf Centre, Brockley Hill, Stanmore

DRAWING TITLE:
**Swept Path Analysis
 Emergency Fire Vehicle
 Access**

SCALES:
1:500 at A3

DRAWN: **JB** CHECKED: **DB** DATE: **09.09.2022**

vectos. | PART OF **SLR**

The Cursitor, 38 Chancery Lane, London, WC2A 1EN
 020 7580 7373 vectos@vectos.co.uk

DRAWING NUMBER: **226759/AT/A04** REVISION: **.**

SUDS pond
 Ordnance Survey © Crown copyright 2021
 All rights reserved. Licence No. 100059809

NOTE: THE PROPERTY OF THIS DRAWING AND DESIGN IS VESTED IN VECTOS (SOUTH) LTD.
 IT MUST NOT BE COPIED OR REPRODUCED IN ANY WAY WITHOUT THEIR PRIOR WRITTEN CONSENT.

Appendix D

Travel Survey Questionnaire. Premier Banqueting London Ltd will be relocating. We are trying to determine the travel patterns of our guests to help with our planning application. Please help us by answering the questions below as fully as possible.

	Date	Time of arrival
Please indicate what time you arrived at Premier Banqueting London today.	25/03/22	6pm

How did you travel here today?	Walk	Cycle	Car	Taxi/Uber	Bus	Coach	Train
			✓				

If you arrived by car/taxi/uber, how many other guests were in with you? If you were on your own, please say so.	3.
--	----

If you were the 'car driver', where did you park? Please be as accurate as possible.	Car Park
--	----------

	0-15mins	16-30	30-45	45-60	over 60
How long did it take you to get here today?		✓			

So that we can see where our customers travel from, can you tell us where you were immediately before you travelled here today?	Place Name or Postcode
	Hammers

Are you staying overnight as part of your attendance at this event?	No	With family/friends	Elswhere e.g Hotel
	✓		

How many nights will you be staying?	
--------------------------------------	--

Will you be dining out (other than at this event) as part of your trip? If yes, on how many occasions will you be spending on food and drink?	2
---	---

Where do you live?	Town	Country
	Hammers	

Travel Survey Questionnaire. Premier Banqueting London Ltd will be relocating. We are trying to determine the travel patterns of our guests to help with our planning application. Please help us by answering the questions below as fully as possible.

	Date	Time of arrival
Please indicate what time you arrived at Premier Banqueting London today.	25/3/22	6pm

How did you travel here today?	Walk	Cycle	Car	Taxi/Uber	Bus	Coach	Train
			X				

If you arrived by car/taxi/uber, how many other guests were in with you? If you were on your own, please say so.	4
--	---

If you were the 'car driver', where did you park? Please be as accurate as possible.	Car Park
--	----------

	0-15mins	16-30	30-45	45-60	over 60
How long did it take you to get here today?			X		

So that we can see where our customers travel from, can you tell us where you were immediately before you travelled here today?	Place Name or Postcode
	Greenford

Are you staying overnight as part of your attendance at this event?	No X	With family/friends	Elswhere e.g Hotel
---	------	---------------------	--------------------

How many nights will you be staying?	X
--------------------------------------	---

Will you be dining out (other than at this event) as part of your trip? If yes, on how many occasions will you be spending on food and drink?	1
---	---

Where do you live?	Town	Country
	Greenford	

Travel Survey Questionnaire. Premier Banqueting London Ltd will be relocating. We are trying to determine the travel patterns of our guests to help with our planning application. Please help us by answering the questions below as fully as possible.

	Date	Time of arrival
Please indicate what time you arrived at Premier Banqueting London today.	25/03	6.10pm

How did you travel here today?	Walk	Cycle	Car	Taxi/Uber	Bus	Coach	Train
			X				

If you arrived by car/taxi/uber, how many other guests were in with you? If you were on your own, please say so.	2
--	---

If you were the 'car driver', where did you park? Please be as accurate as possible.	Cite Park
--	-----------

	0-15mins	16-30	30-45	45-60	over 60
How long did it take you to get here today?	X				

So that we can see where our customers travel from, can you tell us where you were immediately before you travelled here today?	Place Name or Postcode
	Hillier

Are you staying overnight as part of your attendance at this event?	No	With family/friends	Elswhere e.g Hotel
	X		

How many nights will you be staying?	X
--------------------------------------	---

Will you be dining out (other than at this event) as part of your trip? If yes, on how many occasions will you be spending on food and drink?	X
---	---

Where do you live?	Town	Country
	Hillier	

Travel Survey Questionnaire. Premier Banqueting London Ltd will be relocating. We are trying to determine the travel patterns of our guests to help with our planning application. Please help us by answering the questions below as fully as possible.

	Date	Time of arrival
Please indicate what time you arrived at Premier Banqueting London today.	25/02	6:15pm

How did you travel here today?	Walk	Cycle	Car	Taxi/Uber	Bus	Coach	Train
			X				

If you arrived by car/taxi/uber, how many other guests were in with you? If you were on your own, please say so.	3
--	---

If you were the 'car driver', where did you park? Please be as accurate as possible.	WEMBLEY
--	---------

	0-15mins	16-30	30-45	45-60	over 60
How long did it take you to get here today?		X			

So that we can see where our customers travel from, can you tell us where you were immediately before you travelled here today?	Place Name or Postcode
	WEMBLEY

Are you staying overnight as part of your attendance at this event?	No	With family/friends	Elswhere e.g Hotel
	X		

How many nights will you be staying?	X
--------------------------------------	---

Will you be dining out (other than at this event) as part of your trip? If yes, on how many occasions will you be spending on food and drink?	
---	--

Where do you live?	Town	Country
	WEMBLEY	

Travel Survey Questionnaire. Premier Banqueting London Ltd will be relocating. We are trying to determine the travel patterns of our guests to help with our planning application. Please help us by answering the questions below as fully as possible.

	Date	Time of arrival
Please indicate what time you arrived at Premier Banqueting London today.	25/10	6:pm

How did you travel here today?	Walk	Cycle	Car	Taxi/Uber	Bus	Coach	Train
			X				

If you arrived by car/taxi/uber, how many other guests were in with you? If you were on your own, please say so.	3.
--	----

If you were the 'car driver', where did you park? Please be as accurate as possible.	CAR PARK
--	----------

	0-15mins	16-30	30-45	45-60	over 60
How long did it take you to get here today?	X				

So that we can see where our customers travel from, can you tell us where you were immediately before you travelled here today?	Place Name or Postcode
	TRAVEL LODGE, HATFIELD

Are you staying overnight as part of your attendance at this event?	No	With family/friends	Elswhere e.g Hotel
			X

How many nights will you be staying?	1
--------------------------------------	---

Will you be dining out (other than at this event) as part of your trip? If yes, on how many occasions will you be spending on food and drink?	X
---	---

Where do you live?	Town	Country
	MILTON KEYNES	

Travel Survey Questionnaire. Premier Banqueting London Ltd will be relocating. We are trying to determine the travel patterns of our guests to help with our planning application. Please help us by answering the questions below as fully as possible.

	Date	Time of arrival
Please indicate what time you arrived at Premier Banqueting London today.	25/12	6pm

How did you travel here today?	Walk	Cycle	Car	Taxi/Uber	Bus	Coach	Train
				X			

If you arrived by car/taxi/uber, how many other guests were in with you? If you were on your own, please say so.	3.
--	----

If you were the 'car driver', where did you park? Please be as accurate as possible.	
--	--

	0-15mins	16-30	30-45	45-60	over 60
How long did it take you to get here today?	X				

So that we can see where our customers travel from, can you tell us where you were immediately before you travelled here today?	Place Name or Postcode
	WARR Row

Are you staying overnight as part of your attendance at this event?	No	With family/friends	Elswhere e.g Hotel
	X		

How many nights will you be staying?	X
--------------------------------------	---

Will you be dining out (other than at this event) as part of your trip? If yes, on how many occasions will you be spending on food and drink?	
---	--

Where do you live?	Town	Country
	WARR Row	

Travel Survey Questionnaire. Premier Banqueting London Ltd will be relocating. We are trying to determine the travel patterns of our guests to help with our planning application. Please help us by answering the questions below as fully as possible.

	Date	Time of arrival
Please indicate what time you arrived at Premier Banqueting London today.	25/02	6:15pm

How did you travel here today?	Walk	Cycle	Car	Taxi/Uber	Bus	Coach	Train
				X			

If you arrived by car/taxi/uber, how many other guests were in with you? If you were on your own, please say so.	4
--	---

If you were the 'car driver', where did you park? Please be as accurate as possible.	
--	--

	0-15mins	16-30	30-45	45-60	over 60
How long did it take you to get here today?			X		

So that we can see where our customers travel from, can you tell us where you were immediately before you travelled here today?	Place Name or Postcode
	SL000H

Are you staying overnight as part of your attendance at this event?	No	With family/friends	Elswhere e.g Hotel
	X		

How many nights will you be staying?	X
--------------------------------------	---

Will you be dining out (other than at this event) as part of your trip? If yes, on how many occasions will you be spending on food and drink?	
---	--

Where do you live?	Town	Country
	SL000H	

Travel Survey Questionnaire. Premier Banqueting London Ltd will be relocating. We are trying to determine the travel patterns of our guests to help with our planning application. Please help us by answering the questions below as fully as possible.

	Date	Time of arrival
Please indicate what time you arrived at Premier Banqueting London today.	25/03	

How did you travel here today?	Walk	Cycle	Car	Taxi/Uber	Bus	Coach	Train
			X				

If you arrived by car/taxi/uber, how many other guests were in with you? If you were on your own, please say so.	2
--	---

If you were the 'car driver', where did you park? Please be as accurate as possible.	Car Park
--	----------

	0-15mins	16-30	30-45	45-60	over 60
How long did it take you to get here today?		X			

So that we can see where our customers travel from, can you tell us where you were immediately before you travelled here today?	Place Name or Postcode
	HANDELS

Are you staying overnight as part of your attendance at this event?	No	With family/friends	Elswhere e.g Hotel
	X		

How many nights will you be staying?	2
--------------------------------------	---

Will you be dining out (other than at this event) as part of your trip? If yes, on how many occasions will you be spending on food and drink?	
---	--

Where do you live?	Town	Country
	STANALCHES	

Travel Survey Questionnaire. Premier Banqueting London Ltd will be relocating. We are trying to determine the travel patterns of our guests to help with our planning application. Please help us by answering the questions below as fully as possible.

	Date	Time of arrival
Please indicate what time you arrived at Premier Banqueting London today.	25/03	6pm. 6.15pm

How did you travel here today?	Walk	Cycle	Car	Taxi/Uber	Bus	Coach	Train
			X				

If you arrived by car/taxi/uber, how many other guests were in with you? If you were on your own, please say so.	4
--	---

If you were the 'car driver', where did you park? Please be as accurate as possible.	Car Park
--	----------

	0-15mins	16-30	30-45	45-60	over 60
How long did it take you to get here today?	X				

So that we can see where our customers travel from, can you tell us where you were immediately before you travelled here today?	Place Name or Postcode
	6 DG Wmre

Are you staying overnight as part of your attendance at this event?	No	With family/friends	Elswhere e.g Hotel
	X		

How many nights will you be staying?	X
--------------------------------------	---

Will you be dining out (other than at this event) as part of your trip? If yes, on how many occassions will you be spending on food and drink?	
--	--

Where do you live?	Town	Country
	6 DG Wmre	

Travel Survey Questionnaire. Premier Banqueting London Ltd will be relocating. We are trying to determine the travel patterns of our guests to help with our planning application. Please help us by answering the questions below as fully as possible.

	Date	Time of arrival
Please indicate what time you arrived at Premier Banqueting London today.	25/03	6-10pm

How did you travel here today?	Walk	Cycle	Car	Taxi/Uber	Bus	Coach	Train
			X				

If you arrived by car/taxi/uber, how many other guests were in with you? If you were on your own, please say so.	4
--	---

If you were the 'car driver', where did you park? Please be as accurate as possible.	Club Park
--	-----------

	0-15mins	16-30	30-45	45-60	over 60
How long did it take you to get here today?	X				

So that we can see where our customers travel from, can you tell us where you were immediately before you travelled here today?	Place Name or Postcode
	KENTON

Are you staying overnight as part of your attendance at this event?	No	With family/friends	Elswhere e.g Hotel
	X		

How many nights will you be staying?	X
--------------------------------------	---

Will you be dining out (other than at this event) as part of your trip? If yes, on how many occasions will you be spending on food and drink?	
---	--

Where do you live?	Town	Country
	Hammers	

Travel Survey Questionnaire. Premier Banqueting London Ltd will be relocating. We are trying to determine the travel patterns of our guests to help with our planning application. Please help us by answering the questions below as fully as possible.

	Date	Time of arrival
Please indicate what time you arrived at Premier Banqueting London today.	26/03	7:10pm

How did you travel here today?	Walk	Cycle	Car	Taxi/Uber	Bus	Coach	Train
			X				

If you arrived by car/taxi/uber, how many other guests were in with you? If you were on your own, please say so.	4
--	---

If you were the 'car driver', where did you park? Please be as accurate as possible.	Car park
--	----------

	0-15mins	16-30	30-45	45-60	over 60
How long did it take you to get here today?		X			

So that we can see where our customers travel from, can you tell us where you were immediately before you travelled here today?	Place Name or Postcode
	WATFORD

Are you staying overnight as part of your attendance at this event?	No	With family/friends	Elswhere e.g Hotel
	X		

How many nights will you be staying?	X
--------------------------------------	---

Will you be dining out (other than at this event) as part of your trip? If yes, on how many occasions will you be spending on food and drink?	2
---	---

Where do you live?	Town	Country
	WATFORD	

Travel Survey Questionnaire. Premier Banqueting London Ltd will be relocating. We are trying to determine the travel patterns of our guests to help with our planning application. Please help us by answering the questions below as fully as possible.

	Date	Time of arrival
Please indicate what time you arrived at Premier Banqueting London today.	26/05	7am

How did you travel here today?	Walk	Cycle	Car	Taxi/Uber	Bus	Coach	Train
			X				

If you arrived by car/taxi/uber, how many other guests were in with you? If you were on your own, please say so.	4
--	---

If you were the 'car driver', where did you park? Please be as accurate as possible.	Car Park
--	----------

	0-15mins	16-30	30-45	45-60	over 60
How long did it take you to get here today?		X			

So that we can see where our customers travel from, can you tell us where you were immediately before you travelled here today?	Place Name or Postcode
	Cammins Park

Are you staying overnight as part of your attendance at this event?	No	With family/friends	Elswhere e.g Hotel
	X		

How many nights will you be staying?	X
--------------------------------------	---

Will you be dining out (other than at this event) as part of your trip? If yes, on how many occasions will you be spending on food and drink?	
---	--

Where do you live?	Town	Country
	Altham	

Travel Survey Questionnaire. Premier Banqueting London Ltd will be relocating. We are trying to determine the travel patterns of our guests to help with our planning application. Please help us by answering the questions below as fully as possible.

	Date	Time of arrival
Please indicate what time you arrived at Premier Banqueting London today.	26/03	7pm

How did you travel here today?	Walk	Cycle	Car	Taxi/Uber	Bus	Coach	Train
				X			

If you arrived by car/taxi/uber, how many other guests were in with you? If you were on your own, please say so.	4
--	---

If you were the 'car driver', where did you park? Please be as accurate as possible.	
--	--

	0-15mins	16-30	30-45	45-60	over 60
How long did it take you to get here today?	X				

So that we can see where our customers travel from, can you tell us where you were immediately before you travelled here today?	Place Name or Postcode
	Hammers

Are you staying overnight as part of your attendance at this event?	No	With family/friends	Elswhere e.g Hotel
	X		

How many nights will you be staying?	X
--------------------------------------	---

Will you be dining out (other than at this event) as part of your trip? If yes, on how many occasions will you be spending on food and drink?	1
---	---

Where do you live?	Town	Country
	Hammers	

Travel Survey Questionnaire. Premier Banqueting London Ltd will be relocating. We are trying to determine the travel patterns of our guests to help with our planning application. Please help us by answering the questions below as fully as possible.

	Date	Time of arrival
Please indicate what time you arrived at Premier Banqueting London today.	26/09	7pm

How did you travel here today?	Walk	Cycle	Car	Taxi/Uber	Bus	Coach	Train
			X				

If you arrived by car/taxi/uber, how many other guests were in with you? If you were on your own, please say so.	4
--	---

If you were the 'car driver', where did you park? Please be as accurate as possible.	City Road
--	-----------

	0-15mins	16-30	30-45	45-60	over 60
How long did it take you to get here today?	X				

So that we can see where our customers travel from, can you tell us where you were immediately before you travelled here today?	Place Name or Postcode
	HA7 3RZ

Are you staying overnight as part of your attendance at this event?	No	With family/friends	Elswhere e.g Hotel

How many nights will you be staying?	
--------------------------------------	--

Will you be dining out (other than at this event) as part of your trip? If yes, on how many occasions will you be spending on food and drink?	
---	--

Where do you live?	Town	Country
	Stamwell	

Travel Survey Questionnaire. Premier Banqueting London Ltd will be relocating. We are trying to determine the travel patterns of our guests to help with our planning application. Please help us by answering the questions below as fully as possible.

	Date	Time of arrival
Please indicate what time you arrived at Premier Banqueting London today.	26/8/23	7.30.

How did you travel here today?	Walk	Cycle	Car	Taxi/Uber	Bus	Coach	Train
			X	,			

If you arrived by car/taxi/uber, how many other guests were in with you? If you were on your own, please say so.	3.
--	----

If you were the 'car driver', where did you park? Please be as accurate as possible.	Car Park
--	----------

	0-15mins	16-30	30-45	45-60	over 60
How long did it take you to get here today?	X				

So that we can see where our customers travel from, can you tell us where you were immediately before you travelled here today?	Place Name or Postcode
	BUSHEY

Are you staying overnight as part of your attendance at this event?	No	With family/friends	Elswhere e.g Hotel

How many nights will you be staying?	
--------------------------------------	--

Will you be dining out (other than at this event) as part of your trip? If yes, on how many occasions will you be spending on food and drink?	
---	--

Where do you live?	Town	Country
	BUSHEY	

Travel Survey Questionnaire. Premier Banqueting London Ltd will be relocating. We are trying to determine the travel patterns of our guests to help with our planning application. Please help us by answering the questions below as fully as possible.

	Date	Time of arrival
Please indicate what time you arrived at Premier Banqueting London today.	27/03	10am

How did you travel here today?	Walk	Cycle	Car	Taxi/Uber	Bus	Coach	Train
			X				

If you arrived by car/taxi/uber, how many other guests were in with you? If you were on your own, please say so.	4
--	---

If you were the 'car driver', where did you park? Please be as accurate as possible.	Car park
--	----------

	0-15mins	16-30	30-45	45-60	over 60
How long did it take you to get here today?	X				

So that we can see where our customers travel from, can you tell us where you were immediately before you travelled here today?	Place Name or Postcode
	Uxbridge

Are you staying overnight as part of your attendance at this event?	No	With family/friends	Elswhere e.g Hotel
	X		

How many nights will you be staying?	1
--------------------------------------	---

Will you be dining out (other than at this event) as part of your trip? If yes, on how many occasions will you be spending on food and drink?	
---	--

Where do you live?	Town	Country
	Mill Hill	

Travel Survey Questionnaire. Premier Banqueting London Ltd will be relocating. We are trying to determine the travel patterns of our guests to help with our planning application. Please help us by answering the questions below as fully as possible.

	Date	Time of arrival
Please indicate what time you arrived at Premier Banqueting London today.	27/03	10:00am

How did you travel here today?	Walk	Cycle	Car	Taxi/Uber	Bus	Coach	Train
			X				

If you arrived by car/taxi/uber, how many other guests were in with you? If you were on your own, please say so.	Car 1pm
--	---------

If you were the 'car driver', where did you park? Please be as accurate as possible.	2
--	---

	0-15mins	16-30	30-45	45-60	over 60
How long did it take you to get here today?		X			

So that we can see where our customers travel from, can you tell us where you were immediately before you travelled here today?	Place Name or Postcode
	MILL HILL

Are you staying overnight as part of your attendance at this event?	No	With family/friends	Elswhere e.g Hotel

How many nights will you be staying?	
--------------------------------------	--

Will you be dining out (other than at this event) as part of your trip? If yes, on how many occasions will you be spending on food and drink?	
---	--

Where do you live?	Town	Country
	MILL HILL	

Travel Survey Questionnaire. Premier Banqueting London Ltd will be relocating. We are trying to determine the travel patterns of our guests to help with our planning application. Please help us by answering the questions below as fully as possible.

	Date	Time of arrival
Please indicate what time you arrived at Premier Banqueting London today.	27/03	10am

How did you travel here today?	Walk	Cycle	Car	Taxi/Uber	Bus	Coach	Train
			X				

If you arrived by car/taxi/uber, how many other guests were in with you? If you were on your own, please say so.	4
--	---

If you were the 'car driver', where did you park? Please be as accurate as possible.	City Park
--	-----------

	0-15mins	16-30	30-45	45-60	over 60
How long did it take you to get here today?			X		

So that we can see where our customers travel from, can you tell us where you were immediately before you travelled here today?	Place Name or Postcode
	ENFIELD

Are you staying overnight as part of your attendance at this event?	No	With family/friends	Elswhere e.g Hotel

How many nights will you be staying?	
--------------------------------------	--

Will you be dining out (other than at this event) as part of your trip? If yes, on how many occasions will you be spending on food and drink?	
---	--

Where do you live?	Town	Country
	ENFIELD	

Travel Survey Questionnaire. Premier Banqueting London Ltd will be relocating. We are trying to determine the travel patterns of our guests to help with our planning application. Please help us by answering the questions below as fully as possible.

	Date	Time of arrival
Please indicate what time you arrived at Premier Banqueting London today.	24/02	10am

How did you travel here today?	Walk	Cycle	Car	Taxi/Uber	Bus	Coach	Train
			X				

If you arrived by car/taxi/uber, how many other guests were in with you? If you were on your own, please say so.	4
--	---

If you were the 'car driver', where did you park? Please be as accurate as possible.	Clare Park
--	------------

	0-15mins	16-30	30-45	45-60	over 60
How long did it take you to get here today?	X				

So that we can see where our customers travel from, can you tell us where you were immediately before you travelled here today?	Place Name or Postcode
	MARPLE

Are you staying overnight as part of your attendance at this event?	No	With family/friends	Elswhere e.g Hotel

How many nights will you be staying?	
--------------------------------------	--

Will you be dining out (other than at this event) as part of your trip? If yes, on how many occasions will you be spending on food and drink?	
---	--

Where do you live?	Town	Country

Travel Survey Questionnaire. Premier Banqueting London Ltd will be relocating. We are trying to determine the travel patterns of our guests to help with our planning application. Please help us by answering the questions below as fully as possible.

	Date	Time of arrival
Please indicate what time you arrived at Premier Banqueting London today.	27/03	10 am

How did you travel here today?	Walk	Cycle	Car	Taxi/Uber	Bus	Coach	Train
				X			

If you arrived by car/taxi/uber, how many other guests were in with you? If you were on your own, please say so.	2
--	---

If you were the 'car driver', where did you park? Please be as accurate as possible.	
--	--

	0-15mins	16-30	30-45	45-60	over 60
How long did it take you to get here today?		X			

So that we can see where our customers travel from, can you tell us where you were immediately before you travelled here today?	Place Name or Postcode
	MARLOW

Are you staying overnight as part of your attendance at this event?	No	With family/friends	Elswhere e.g Hotel

How many nights will you be staying?	
--------------------------------------	--

Will you be dining out (other than at this event) as part of your trip? If yes, on how many occasions will you be spending on food and drink?	
---	--

Where do you live?	Town	Country
	MARLOW	

Travel Survey Questionnaire. Premier Banqueting London Ltd will be relocating. We are trying to determine the travel patterns of our guests to help with our planning application. Please help us by answering the questions below as fully as possible.

	Date	Time of arrival
Please indicate what time you arrived at Premier Banqueting London today.	27/03	10am

How did you travel here today?	Walk	Cycle	Car	Taxi/Uber	Bus	Coach	Train
			X				

If you arrived by car/taxi/uber, how many other guests were in with you? If you were on your own, please say so.	4
--	---

If you were the 'car driver', where did you park? Please be as accurate as possible.	City Square
--	-------------

	0-15mins	16-30	30-45	45-60	over 60
How long did it take you to get here today?			X		

So that we can see where our customers travel from, can you tell us where you were immediately before you travelled here today?	Place Name or Postcode
	EA LINDA

Are you staying overnight as part of your attendance at this event?	No	With family/friends	Elswhere e.g Hotel

How many nights will you be staying?	
--------------------------------------	--

Will you be dining out (other than at this event) as part of your trip? If yes, on how many occasions will you be spending on food and drink?	
---	--

Where do you live?	Town	Country
	EA LINDA	

Travel Survey Questionnaire. Premier Banqueting London Ltd will be relocating. We are trying to determine the travel patterns of our guests to help with our planning application. Please help us by answering the questions below as fully as possible.

	Date	Time of arrival
Please indicate what time you arrived at Premier Banqueting London today.	27/03	10am

How did you travel here today?	Walk	Cycle	Car	Taxi/Uber	Bus	Coach	Train
			X				

If you arrived by car/taxi/uber, how many other guests were in with you? If you were on your own, please say so.	5
--	---

If you were the 'car driver', where did you park? Please be as accurate as possible.	Car Park
--	----------

	0-15mins	16-30	30-45	45-60	over 60
How long did it take you to get here today?	X				

So that we can see where our customers travel from, can you tell us where you were immediately before you travelled here today?	Place Name or Postcode
	MANCHESTER

Are you staying overnight as part of your attendance at this event?	No	With family/friends	Elswhere e.g Hotel

How many nights will you be staying?	
--------------------------------------	--

Will you be dining out (other than at this event) as part of your trip? If yes, on how many occasions will you be spending on food and drink?	
---	--

Where do you live?	Town	Country
	WALSLEY	

Travel Survey Questionnaire. Premier Banqueting London Ltd will be relocating. We are trying to determine the travel patterns of our guests to help with our planning application. Please help us by answering the questions below as fully as possible.

	Date	Time of arrival
Please indicate what time you arrived at Premier Banqueting London today.	27/03	1015

How did you travel here today?	Walk	Cycle	Car	Taxi/Uber	Bus	Coach	Train
			X				

If you arrived by car/taxi/uber, how many other guests were in with you? If you were on your own, please say so.	2
--	---

If you were the 'car driver', where did you park? Please be as accurate as possible.	Car park
--	----------

	0-15mins	16-30	30-45	45-60	over 60
How long did it take you to get here today?	X				

So that we can see where our customers travel from, can you tell us where you were immediately before you travelled here today?	Place Name or Postcode
	HARROW

Are you staying overnight as part of your attendance at this event?	No	With family/friends	Elswhere e.g Hotel

How many nights will you be staying?	
--------------------------------------	--

Will you be dining out (other than at this event) as part of your trip? If yes, on how many occasions will you be spending on food and drink?	
---	--

Where do you live?	Town	Country
	Harrow	

Travel Survey Questionnaire. Premier Banqueting London Ltd will be relocating. We are trying to determine the travel patterns of our guests to help with our planning application. Please help us by answering the questions below as fully as possible.

	Date	Time of arrival
Please indicate what time you arrived at Premier Banqueting London today.	27/09	

How did you travel here today?	Walk	Cycle	Car	Taxi/Uber	Bus	Coach	Train
			X				

If you arrived by car/taxi/uber, how many other guests were in with you? If you were on your own, please say so.	3
--	---

If you were the 'car driver', where did you park? Please be as accurate as possible.	CHIL PARK
--	-----------

	0-15mins	16-30	30-45	45-60	over 60
How long did it take you to get here today?		X			

So that we can see where our customers travel from, can you tell us where you were immediately before you travelled here today?	Place Name or Postcode
	EALING

Are you staying overnight as part of your attendance at this event?	No	With family/friends	Elswhere e.g Hotel

How many nights will you be staying?	
--------------------------------------	--

Will you be dining out (other than at this event) as part of your trip? If yes, on how many occasions will you be spending on food and drink?	
---	--

Where do you live?	Town	Country
	EALING	

Travel Survey Questionnaire. Premier Banqueting London Ltd will be relocating. We are trying to determine the travel patterns of our guests to help with our planning application. Please help us by answering the questions below as fully as possible.

	Date	Time of arrival
Please indicate what time you arrived at Premier Banqueting London today.	27/03.	1030.

How did you travel here today?	Walk	Cycle	Car	Taxi/Uber	Bus	Coach	Train
			X				

If you arrived by car/taxi/uber, how many other guests were in with you? If you were on your own, please say so.	3.
--	----

If you were the 'car driver', where did you park? Please be as accurate as possible.	CAR PARK
--	----------

	0-15mins	16-30	30-45	45-60	over 60
How long did it take you to get here today?			X		

So that we can see where our customers travel from, can you tell us where you were immediately before you travelled here today?	Place Name or Postcode
	LONDON

Are you staying overnight as part of your attendance at this event?	No	With family/friends	Elswhere e.g Hotel

How many nights will you be staying?	
--------------------------------------	--

Will you be dining out (other than at this event) as part of your trip? If yes, on how many occasions will you be spending on food and drink?	
---	--

Where do you live?	Town	Country

Travel Survey Questionnaire. Premier Banqueting London Ltd will be relocating. We are trying to determine the travel patterns of our guests to help with our planning application. Please help us by answering the questions below as fully as possible.

	Date	Time of arrival
Please indicate what time you arrived at Premier Banqueting London today.	27/03	1030

How did you travel here today?	Walk	Cycle	Car	Taxi/Uber	Bus	Coach	Train
						α	

If you arrived by car/taxi/uber, how many other guests were in with you? If you were on your own, please say so.

If you were the 'car driver', where did you park? Please be as accurate as possible.

	0-15mins	16-30	30-45	45-60	over 60
How long did it take you to get here today?					α

So that we can see where our customers travel from, can you tell us where you were immediately before you travelled here today?

Place Name or Postcode

BRADWELL

Are you staying overnight as part of your attendance at this event?	No	With family/friends	Elswhere e.g Hotel
			α

How many nights will you be staying?

Will you be dining out (other than at this event) as part of your trip? If yes, on how many occasions will you be spending on food and drink?

Where do you live?	Town	Country

Travel Survey Questionnaire. Premier Banqueting London Ltd will be relocating. We are trying to determine the travel patterns of our guests to help with our planning application. Please help us by answering the questions below as fully as possible.

	Date	Time of arrival
Please indicate what time you arrived at Premier Banqueting London today.	27/03	1030

How did you travel here today?	Walk	Cycle	Car	Taxi/Uber	Bus	Coach	Train
						x	

If you arrived by car/taxi/uber, how many other guests were in with you? If you were on your own, please say so.

If you were the 'car driver', where did you park? Please be as accurate as possible.

	0-15mins	16-30	30-45	45-60	over 60
How long did it take you to get here today?					x

So that we can see where our customers travel from, can you tell us where you were immediately before you travelled here today?

Place Name or Postcode

Blaxton town

Are you staying overnight as part of your attendance at this event?	No	With family/friends	Elswhere e.g Hotel
			x

How many nights will you be staying?

1

Will you be dining out (other than at this event) as part of your trip? If yes, on how many occasions will you be spending on food and drink?

Where do you live?	Town	Country

Travel Survey Questionnaire. Premier Banqueting London Ltd will be relocating. We are trying to determine the travel patterns of our guests to help with our planning application. Please help us by answering the questions below as fully as possible.

	Date	Time of arrival
Please indicate what time you arrived at Premier Banqueting London today.	27/05	1030

How did you travel here today?	Walk	Cycle	Car	Taxi/Uber	Bus	Coach	Train
						X	

If you arrived by car/taxi/uber, how many other guests were in with you? If you were on your own, please say so.	
--	--

If you were the 'car driver', where did you park? Please be as accurate as possible.	
--	--

	0-15mins	16-30	30-45	45-60	over 60
How long did it take you to get here today?					^

So that we can see where our customers travel from, can you tell us where you were immediately before you travelled here today?	Place Name or Postcode
	BLAOKWLN

Are you staying overnight as part of your attendance at this event?	No	With family/friends	Elswhere e.g Hotel
			X

How many nights will you be staying?	1
--------------------------------------	---

Will you be dining out (other than at this event) as part of your trip? If yes, on how many occasions will you be spending on food and drink?	
---	--

Where do you live?	Town	Country

Travel Survey Questionnaire. Premier Banqueting London Ltd will be relocating. We are trying to determine the travel patterns of our guests to help with our planning application. Please help us by answering the questions below as fully as possible.

	Date	Time of arrival
Please indicate what time you arrived at Premier Banqueting London today.	27/03	1030

How did you travel here today?	Walk	Cycle	Car	Taxi/Uber	Bus	Coach	Train
						X	

If you arrived by car/taxi/uber, how many other guests were in with you? If you were on your own, please say so.	
--	--

If you were the 'car driver', where did you park? Please be as accurate as possible.	
--	--

	0-15mins	16-30	30-45	45-60	over 60
How long did it take you to get here today?					X

So that we can see where our customers travel from, can you tell us where you were immediately before you travelled here today?	Place Name or Postcode
	Kew Gardens

Are you staying overnight as part of your attendance at this event?	No	With family/friends	Elswhere e.g Hotel
			X

How many nights will you be staying?	1
--------------------------------------	---

Will you be dining out (other than at this event) as part of your trip? If yes, on how many occasions will you be spending on food and drink?	
---	--

Where do you live?	Town	Country

Travel Survey Questionnaire. Premier Banqueting London Ltd will be relocating. We are trying to determine the travel patterns of our guests to help with our planning application. Please help us by answering the questions below as fully as possible.

	Date	Time of arrival
Please indicate what time you arrived at Premier Banqueting London today.	27/07	1030

How did you travel here today?	Walk	Cycle	Car	Taxi/Uber	Bus	Coach	Train
						X	

If you arrived by car/taxi/uber, how many other guests were in with you? If you were on your own, please say so.

If you were the 'car driver', where did you park? Please be as accurate as possible.

	0-15mins	16-30	30-45	45-60	over 60
How long did it take you to get here today?					X

So that we can see where our customers travel from, can you tell us where you were immediately before you travelled here today?

Place Name or Postcode

RHADFORD

Are you staying overnight as part of your attendance at this event?	No	With family/friends	Elswhere e.g Hotel
			X

How many nights will you be staying?

1

Will you be dining out (other than at this event) as part of your trip? If yes, on how many occasions will you be spending on food and drink?

Where do you live?	Town	Country

Travel Survey Questionnaire. Premier Banqueting London Ltd will be relocating. We are trying to determine the travel patterns of our guests to help with our planning application. Please help us by answering the questions below as fully as possible.

	Date	Time of arrival
Please indicate what time you arrived at Premier Banqueting London today.	27/03	1030

How did you travel here today?	Walk	Cycle	Car	Taxi/Uber	Bus	Coach	Train
						X	

If you arrived by car/taxi/uber, how many other guests were in with you? If you were on your own, please say so.	
--	--

If you were the 'car driver', where did you park? Please be as accurate as possible.	
--	--

	0-15mins	16-30	30-45	45-60	over 60
How long did it take you to get here today?					X

So that we can see where our customers travel from, can you tell us where you were immediately before you travelled here today?	Place Name or Postcode
	BK4DFW17

Are you staying overnight as part of your attendance at this event?	No	With family/friends	Elswhere e.g Hotel
			X

How many nights will you be staying?	
--------------------------------------	--

Will you be dining out (other than at this event) as part of your trip? If yes, on how many occasions will you be spending on food and drink?	
---	--

Where do you live?	Town	Country

Travel Survey Questionnaire. Premier Banqueting London Ltd will be relocating. We are trying to determine the travel patterns of our guests to help with our planning application. Please help us by answering the questions below as fully as possible.

	Date	Time of arrival
Please indicate what time you arrived at Premier Banqueting London today.	27/03	10.30

How did you travel here today?	Walk	Cycle	Car	Taxi/Uber	Bus	Coach	Train
						X	

If you arrived by car/taxi/uber, how many other guests were in with you? If you were on your own, please say so.

If you were the 'car driver', where did you park? Please be as accurate as possible.

	0-15mins	16-30	30-45	45-60	over 60
How long did it take you to get here today?					X

So that we can see where our customers travel from, can you tell us where you were immediately before you travelled here today?

Place Name or Postcode

BROADFORD

Are you staying overnight as part of your attendance at this event?	No	With family/friends	Elswhere e.g Hotel
			X

How many nights will you be staying?

Will you be dining out (other than at this event) as part of your trip? If yes, on how many occasions will you be spending on food and drink?

Where do you live?	Town	Country

Travel Survey Questionnaire. Premier Banqueting London Ltd will be relocating. We are trying to determine the travel patterns of our guests to help with our planning application. Please help us by answering the questions below as fully as possible.

	Date	Time of arrival
Please indicate what time you arrived at Premier Banqueting London today.	27/03	1045

How did you travel here today?	Walk	Cycle	Car	Taxi/Uber	Bus	Coach	Train
			X				

If you arrived by car/taxi/uber, how many other guests were in with you? If you were on your own, please say so.	3.
--	----

If you were the 'car driver', where did you park? Please be as accurate as possible.	Car Park
--	----------

	0-15mins	16-30	30-45	45-60	over 60
How long did it take you to get here today?		X			

So that we can see where our customers travel from, can you tell us where you were immediately before you travelled here today?	Place Name or Postcode
	BRENT CROSS

Are you staying overnight as part of your attendance at this event?	No	With family/friends	Elswhere e.g Hotel

How many nights will you be staying?	
--------------------------------------	--

Will you be dining out (other than at this event) as part of your trip? If yes, on how many occasions will you be spending on food and drink?	
---	--

Where do you live?	Town	Country

Travel Survey Questionnaire. Premier Banqueting London Ltd will be relocating. We are trying to determine the travel patterns of our guests to help with our planning application. Please help us by answering the questions below as fully as possible.

	Date	Time of arrival
Please indicate what time you arrived at Premier Banqueting London today.	27/03	1050

How did you travel here today?	Walk	Cycle	Car	Taxi/Uber	Bus	Coach	Train
			X				

If you arrived by car/taxi/uber, how many other guests were in with you? If you were on your own, please say so.	3
--	---

If you were the 'car driver', where did you park? Please be as accurate as possible.	CAR PARK
--	----------

	0-15mins	16-30	30-45	45-60	over 60
How long did it take you to get here today?	X				

So that we can see where our customers travel from, can you tell us where you were immediately before you travelled here today?	Place Name or Postcode
	KENTON

Are you staying overnight as part of your attendance at this event?	No	With family/friends	Elswhere e.g Hotel

How many nights will you be staying?	
--------------------------------------	--

Will you be dining out (other than at this event) as part of your trip? If yes, on how many occasions will you be spending on food and drink?	
---	--

Where do you live?	Town	Country
	KENTON	

Travel Survey Questionnaire. Premier Banqueting London Ltd will be relocating. We are trying to determine the travel patterns of our guests to help with our planning application. Please help us by answering the questions below as fully as possible.

	Date	Time of arrival
Please indicate what time you arrived at Premier Banqueting London today.	27/03	10.50

How did you travel here today?	Walk	Cycle	Car	Taxi/Uber	Bus	Coach	Train
			X				

If you arrived by car/taxi/uber, how many other guests were in with you? If you were on your own, please say so.	3
--	---

If you were the 'car driver', where did you park? Please be as accurate as possible.	CAR PARK
--	----------

	0-15mins	16-30	30-45	45-60	over 60
How long did it take you to get here today?	X				

So that we can see where our customers travel from, can you tell us where you were immediately before you travelled here today?	Place Name or Postcode
	MEADSTONE LANE

Are you staying overnight as part of your attendance at this event?	No	With family/friends	Elswhere e.g Hotel

How many nights will you be staying?	
--------------------------------------	--

Will you be dining out (other than at this event) as part of your trip? If yes, on how many occasions will you be spending on food and drink?	
---	--

Where do you live?	Town	Country
	HILTON	

Travel Survey Questionnaire. Premier Banqueting London Ltd will be relocating. We are trying to determine the travel patterns of our guests to help with our planning application. Please help us by answering the questions below as fully as possible.

	Date	Time of arrival
Please indicate what time you arrived at Premier Banqueting London today.	27/03	10:50

How did you travel here today?	Walk	Cycle	Car	Taxi/Uber	Bus	Coach	Train

If you arrived by car/taxi/uber, how many other guests were in with you? If you were on your own, please say so.	3.
--	----

If you were the 'car driver', where did you park? Please be as accurate as possible.	DROPPED OFF
--	-------------

	0-15mins	16-30	30-45	45-60	over 60
How long did it take you to get here today?	X				

So that we can see where our customers travel from, can you tell us where you were immediately before you travelled here today?	Place Name or Postcode
	HARROW

Are you staying overnight as part of your attendance at this event?	No	With family/friends	Elswhere e.g Hotel

How many nights will you be staying?	
--------------------------------------	--

Will you be dining out (other than at this event) as part of your trip? If yes, on how many occasions will you be spending on food and drink?	
---	--

Where do you live?	Town	Country
	HARROW	

Travel Survey Questionnaire. Premier Banqueting London Ltd will be relocating. We are trying to determine the travel patterns of our guests to help with our planning application. Please help us by answering the questions below as fully as possible.

	Date	Time of arrival
Please indicate what time you arrived at Premier Banqueting London today.	27/03	11pm

How did you travel here today?	Walk	Cycle	Car	Taxi/Uber	Bus	Coach	Train
				X			

If you arrived by car/taxi/uber, how many other guests were in with you? If you were on your own, please say so.	4
--	---

If you were the 'car driver', where did you park? Please be as accurate as possible.	
--	--

	0-15mins	16-30	30-45	45-60	over 60
How long did it take you to get here today?	X				

So that we can see where our customers travel from, can you tell us where you were immediately before you travelled here today?	Place Name or Postcode
	MARLOW

Are you staying overnight as part of your attendance at this event?	No	With family/friends	Elswhere e.g Hotel

How many nights will you be staying?	
--------------------------------------	--

Will you be dining out (other than at this event) as part of your trip? If yes, on how many occasions will you be spending on food and drink?	
---	--

Where do you live?	Town	Country
	MARLOW	

Travel Survey Questionnaire. Premier Banqueting London Ltd will be relocating. We are trying to determine the travel patterns of our guests to help with our planning application. Please help us by answering the questions below as fully as possible.

	Date	Time of arrival
Please indicate what time you arrived at Premier Banqueting London today.	30/03	6pm

How did you travel here today?	Walk	Cycle	Car	Taxi/Uber	Bus	Coach	Train
				X			

If you arrived by car/taxi/uber, how many other guests were in with you? If you were on your own, please say so.	4
--	---

If you were the 'car driver', where did you park? Please be as accurate as possible.	-
--	---

	0-15mins	16-30	30-45	45-60	over 60
How long did it take you to get here today?		X			

So that we can see where our customers travel from, can you tell us where you were immediately before you travelled here today?	Place Name or Postcode
	EARLING ROAD

Are you staying overnight as part of your attendance at this event?	No	With family/friends	Elswhere e.g Hotel

How many nights will you be staying?	
--------------------------------------	--

Will you be dining out (other than at this event) as part of your trip? If yes, on how many occasions will you be spending on food and drink?	
---	--

Where do you live?	Town	Country

Travel Survey Questionnaire. Premier Banqueting London Ltd will be relocating. We are trying to determine the travel patterns of our guests to help with our planning application. Please help us by answering the questions below as fully as possible.

	Date	Time of arrival
Please indicate what time you arrived at Premier Banqueting London today.	3/5/03	6 pm

How did you travel here today?	Walk	Cycle	Car	Taxi/Uber	Bus	Coach	Train
			X				

If you arrived by car/taxi/uber, how many other guests were in with you? If you were on your own, please say so.	4
--	---

If you were the 'car driver', where did you park? Please be as accurate as possible.	SIDE STREET
--	-------------

	0-15mins	16-30	30-45	45-60	over 60
How long did it take you to get here today?	X				

So that we can see where our customers travel from, can you tell us where you were immediately before you travelled here today?	Place Name or Postcode
	VENTON LANE

Are you staying overnight as part of your attendance at this event?	No	With family/friends	Elswhere e.g Hotel

How many nights will you be staying?	
--------------------------------------	--

Will you be dining out (other than at this event) as part of your trip? If yes, on how many occasions will you be spending on food and drink?	
---	--

Where do you live?	Town	Country

Travel Survey Questionnaire. Premier Banqueting London Ltd will be relocating. We are trying to determine the travel patterns of our guests to help with our planning application. Please help us by answering the questions below as fully as possible.

	Date	Time of arrival
Please indicate what time you arrived at Premier Banqueting London today.	30/03/22	6pm

How did you travel here today?	Walk	Cycle	Car	Taxi/Uber	Bus	Coach	Train
			X				

If you arrived by car/taxi/uber, how many other guests were in with you? If you were on your own, please say so.

4

If you were the 'car driver', where did you park? Please be as accurate as possible.

SIDE STREET

	0-15mins	16-30	30-45	45-60	over 60
How long did it take you to get here today?	X				

So that we can see where our customers travel from, can you tell us where you were immediately before you travelled here today?

Place Name or Postcode

KINGSBURY

Are you staying overnight as part of your attendance at this event?

No

With family/friends

Elswhere e.g Hotel

How many nights will you be staying?

Will you be dining out (other than at this event) as part of your trip? If yes, on how many occasions will you be spending on food and drink?

Where do you live?

Town

Country

Travel Survey Questionnaire. Premier Banqueting London Ltd will be relocating. We are trying to determine the travel patterns of our guests to help with our planning application. Please help us by answering the questions below as fully as possible.

	Date	Time of arrival
Please indicate what time you arrived at Premier Banqueting London today.	20/02	8.15pm

How did you travel here today?	Walk	Cycle	Car	Taxi/Uber	Bus	Coach	Train
				X			

If you arrived by car/taxi/uber, how many other guests were in with you? If you were on your own, please say so.	4
--	---

If you were the 'car driver', where did you park? Please be as accurate as possible.	
--	--

	0-15mins	16-30	30-45	45-60	over 60
How long did it take you to get here today?	X				

So that we can see where our customers travel from, can you tell us where you were immediately before you travelled here today?	Place Name or Postcode
	STANNIS

Are you staying overnight as part of your attendance at this event?	No	With family/friends	Elswhere e.g Hotel

How many nights will you be staying?	
--------------------------------------	--

Will you be dining out (other than at this event) as part of your trip? If yes, on how many occasions will you be spending on food and drink?	
---	--

Where do you live?	Town	Country
	STANNIS	

Travel Survey Questionnaire. Premier Banqueting London Ltd will be relocating. We are trying to determine the travel patterns of our guests to help with our planning application. Please help us by answering the questions below as fully as possible.

	Date	Time of arrival
Please indicate what time you arrived at Premier Banqueting London today.	20/03	6pm

How did you travel here today?	Walk	Cycle	Car	Taxi/Uber	Bus	Coach	Train
			X				

If you arrived by car/taxi/uber, how many other guests were in with you? If you were on your own, please say so.	2
--	---

If you were the 'car driver', where did you park? Please be as accurate as possible.	COUNTY HRS.
--	-------------

	0-15mins	16-30	30-45	45-60	over 60
How long did it take you to get here today?	X				

So that we can see where our customers travel from, can you tell us where you were immediately before you travelled here today?	Place Name or Postcode
	HARRIS

Are you staying overnight as part of your attendance at this event?	No	With family/friends	Elswhere e.g Hotel

How many nights will you be staying?	
--------------------------------------	--

Will you be dining out (other than at this event) as part of your trip? If yes, on how many occasions will you be spending on food and drink?	
---	--

Where do you live?	Town	Country

Travel Survey Questionnaire. Premier Banqueting London Ltd will be relocating. We are trying to determine the travel patterns of our guests to help with our planning application. Please help us by answering the questions below as fully as possible.

	Date	Time of arrival
Please indicate what time you arrived at Premier Banqueting London today.	20/03	6pm

How did you travel here today?	Walk	Cycle	Car	Taxi/Uber	Bus	Coach	Train
				X			

If you arrived by car/taxi/uber, how many other guests were in with you? If you were on your own, please say so.	4
--	---

If you were the 'car driver', where did you park? Please be as accurate as possible.	
--	--

	0-15mins	16-30	30-45	45-60	over 60
How long did it take you to get here today?					

So that we can see where our customers travel from, can you tell us where you were immediately before you travelled here today?	Place Name or Postcode
	High New

Are you staying overnight as part of your attendance at this event?	No	With family/friends	Elswhere e.g Hotel

How many nights will you be staying?	
--------------------------------------	--

Will you be dining out (other than at this event) as part of your trip? If yes, on how many occasions will you be spending on food and drink?	
---	--

Where do you live?	Town	Country

Travel Survey Questionnaire. Premier Banqueting London Ltd will be relocating. We are trying to determine the travel patterns of our guests to help with our planning application. Please help us by answering the questions below as fully as possible.

	Date	Time of arrival
Please indicate what time you arrived at Premier Banqueting London today.	30/08	6pm

How did you travel here today?	Walk	Cycle	Car	Taxi/Uber	Bus	Coach	Train
			X				

If you arrived by car/taxi/uber, how many other guests were in with you? If you were on your own, please say so.	3
--	---

If you were the 'car driver', where did you park? Please be as accurate as possible.	Victoria St
--	-------------

	0-15mins	16-30	30-45	45-60	over 60
How long did it take you to get here today?					

So that we can see where our customers travel from, can you tell us where you were immediately before you travelled here today?	Place Name or Postcode
	Hitchin

Are you staying overnight as part of your attendance at this event?	No	With family/friends	Elswhere e.g Hotel

How many nights will you be staying?	
--------------------------------------	--

Will you be dining out (other than at this event) as part of your trip? If yes, on how many occasions will you be spending on food and drink?	
---	--

Where do you live?	Town	Country

Travel Survey Questionnaire. Premier Banqueting London Ltd will be relocating. We are trying to determine the travel patterns of our guests to help with our planning application. Please help us by answering the questions below as fully as possible.

	Date	Time of arrival
Please indicate what time you arrived at Premier Banqueting London today.	2/10/19	11am

How did you travel here today?	Walk	Cycle	Car	Taxi/Uber	Bus	Coach	Train
			X				

If you arrived by car/taxi/uber, how many other guests were in with you? If you were on your own, please say so.	3.
--	----

If you were the 'car driver', where did you park? Please be as accurate as possible.	CAR PARK
--	----------

	0-15mins	16-30	30-45	45-60	over 60
How long did it take you to get here today?		X			

So that we can see where our customers travel from, can you tell us where you were immediately before you travelled here today?	Place Name or Postcode
	WEMBLEY

Are you staying overnight as part of your attendance at this event?	No	With family/friends	Elswhere e.g Hotel

How many nights will you be staying?	
--------------------------------------	--

Will you be dining out (other than at this event) as part of your trip? If yes, on how many occasions will you be spending on food and drink?	
---	--

Where do you live?	Town	Country

Travel Survey Questionnaire. Premier Banqueting London Ltd will be relocating. We are trying to determine the travel patterns of our guests to help with our planning application. Please help us by answering the questions below as fully as possible.

	Date	Time of arrival
Please indicate what time you arrived at Premier Banqueting London today.	2/04	11am

How did you travel here today?	Walk	Cycle	Car	Taxi/Uber	Bus	Coach	Train
			X				

If you arrived by car/taxi/uber, how many other guests were in with you? If you were on your own, please say so.	2.
--	----

If you were the 'car driver', where did you park? Please be as accurate as possible.	Uxbridge
--	----------

	0-15mins	16-30	30-45	45-60	over 60
How long did it take you to get here today?		X			

So that we can see where our customers travel from, can you tell us where you were immediately before you travelled here today?	Place Name or Postcode
	Chiswick

Are you staying overnight as part of your attendance at this event?	No	With family/friends	Elswhere e.g Hotel

How many nights will you be staying?	
--------------------------------------	--

Will you be dining out (other than at this event) as part of your trip? If yes, on how many occasions will you be spending on food and drink?	
---	--

Where do you live?	Town	Country

Travel Survey Questionnaire. Premier Banqueting London Ltd will be relocating. We are trying to determine the travel patterns of our guests to help with our planning application. Please help us by answering the questions below as fully as possible.

	Date	Time of arrival
Please indicate what time you arrived at Premier Banqueting London today.	2/09	11am

How did you travel here today?	Walk	Cycle	Car	Taxi/Uber	Bus	Coach	Train
				X			

If you arrived by car/taxi/uber, how many other guests were in with you? If you were on your own, please say so.	4
--	---

If you were the 'car driver', where did you park? Please be as accurate as possible.	
--	--

	0-15mins	16-30	30-45	45-60	over 60
How long did it take you to get here today?					

So that we can see where our customers travel from, can you tell us where you were immediately before you travelled here today?	Place Name or Postcode
	MARSA.

Are you staying overnight as part of your attendance at this event?	No	With family/friends	Elswhere e.g Hotel

How many nights will you be staying?	
--------------------------------------	--

Will you be dining out (other than at this event) as part of your trip? If yes, on how many occasions will you be spending on food and drink?	
---	--

Where do you live?	Town	Country

Travel Survey Questionnaire. Premier Banqueting London Ltd will be relocating. We are trying to determine the travel patterns of our guests to help with our planning application. Please help us by answering the questions below as fully as possible.

	Date	Time of arrival
Please indicate what time you arrived at Premier Banqueting London today.	2/04	11am

How did you travel here today?	Walk	Cycle	Car	Taxi/Uber	Bus	Coach	Train
			X				

If you arrived by car/taxi/uber, how many other guests were in with you? If you were on your own, please say so.	3
--	---

If you were the 'car driver', where did you park? Please be as accurate as possible.	CAR PARK
--	----------

	0-15mins	16-30	30-45	45-60	over 60
How long did it take you to get here today?	X				

So that we can see where our customers travel from, can you tell us where you were immediately before you travelled here today?	Place Name or Postcode
	11th Avenue

Are you staying overnight as part of your attendance at this event?	No	With family/friends	Elswhere e.g Hotel

How many nights will you be staying?	
--------------------------------------	--

Will you be dining out (other than at this event) as part of your trip? If yes, on how many occasions will you be spending on food and drink?	
---	--

Where do you live?	Town	Country

Travel Survey Questionnaire. Premier Banqueting London Ltd will be relocating. We are trying to determine the travel patterns of our guests to help with our planning application. Please help us by answering the questions below as fully as possible.

	Date	Time of arrival
Please indicate what time you arrived at Premier Banqueting London today.	2104	11am

How did you travel here today?	Walk	Cycle	Car	Taxi/Uber	Bus	Coach	Train
			X				

If you arrived by car/taxi/uber, how many other guests were in with you? If you were on your own, please say so.	3.
--	----

If you were the 'car driver', where did you park? Please be as accurate as possible.	CAN PARK
--	----------

	0-15mins	16-30	30-45	45-60	over 60
How long did it take you to get here today?	X				

So that we can see where our customers travel from, can you tell us where you were immediately before you travelled here today?	Place Name or Postcode
	HARROW.

Are you staying overnight as part of your attendance at this event?	No	With family/friends	Elswhere e.g Hotel

How many nights will you be staying?	
--------------------------------------	--

Will you be dining out (other than at this event) as part of your trip? If yes, on how many occasions will you be spending on food and drink?	
---	--

Where do you live?	Town	Country

Travel Survey Questionnaire. Premier Banqueting London Ltd will be relocating. We are trying to determine the travel patterns of our guests to help with our planning application. Please help us by answering the questions below as fully as possible.

	Date	Time of arrival
Please indicate what time you arrived at Premier Banqueting London today.	2/04	11am.

How did you travel here today?	Walk	Cycle	Car	Taxi/Uber	Bus	Coach	Train
			X				

If you arrived by car/taxi/uber, how many other guests were in with you? If you were on your own, please say so.	4
--	---

If you were the 'car driver', where did you park? Please be as accurate as possible.	STOON COLE PARK
--	----------------------------

	0-15mins	16-30	30-45	45-60	over 60
How long did it take you to get here today?			X		

So that we can see where our customers travel from, can you tell us where you were immediately before you travelled here today?	Place Name or Postcode
	STOON

Are you staying overnight as part of your attendance at this event?	No	With family/friends	Elswhere e.g Hotel

How many nights will you be staying?	
--------------------------------------	--

Will you be dining out (other than at this event) as part of your trip? If yes, on how many occassions will you be spending on food and drink?	
--	--

Where do you live?	Town	Country

Travel Survey Questionnaire. Premier Banqueting London Ltd will be relocating. We are trying to determine the travel patterns of our guests to help with our planning application. Please help us by answering the questions below as fully as possible.

	Date	Time of arrival
Please indicate what time you arrived at Premier Banqueting London today.	2:00	10am

How did you travel here today?	Walk	Cycle	Car	Taxi/Uber	Bus	Coach	Train
			X				

If you arrived by car/taxi/uber, how many other guests were in with you? If you were on your own, please say so.	4
--	---

If you were the 'car driver', where did you park? Please be as accurate as possible.	SLOUGH
--	--------

	0-15mins	16-30	30-45	45-60	over 60
How long did it take you to get here today?			X		

So that we can see where our customers travel from, can you tell us where you were immediately before you travelled here today?	Place Name or Postcode
	CITR PARK

Are you staying overnight as part of your attendance at this event?	No	With family/friends	Elswhere e.g Hotel

How many nights will you be staying?	
--------------------------------------	--

Will you be dining out (other than at this event) as part of your trip? If yes, on how many occasions will you be spending on food and drink?	
---	--

Where do you live?	Town	Country

Travel Survey Questionnaire. Premier Banqueting London Ltd will be relocating. We are trying to determine the travel patterns of our guests to help with our planning application. Please help us by answering the questions below as fully as possible.

	Date	Time of arrival
Please indicate what time you arrived at Premier Banqueting London today.	2/04	10am.

How did you travel here today?	Walk	Cycle	Car	Taxi/Uber	Bus	Coach	Train
			X				

If you arrived by car/taxi/uber, how many other guests were in with you? If you were on your own, please say so.	4
--	---

If you were the 'car driver', where did you park? Please be as accurate as possible.	Citil Park
--	------------

	0-15mins	16-30	30-45	45-60	over 60
How long did it take you to get here today?		X			

So that we can see where our customers travel from, can you tell us where you were immediately before you travelled here today?	Place Name or Postcode
	LUTONS

Are you staying overnight as part of your attendance at this event?	No	With family/friends	Elswhere e.g Hotel

How many nights will you be staying?	
--------------------------------------	--

Will you be dining out (other than at this event) as part of your trip? If yes, on how many occasions will you be spending on food and drink?	
---	--

Where do you live?	Town	Country
	LUTONS	

Travel Survey Questionnaire. Premier Banqueting London Ltd will be relocating. We are trying to determine the travel patterns of our guests to help with our planning application. Please help us by answering the questions below as fully as possible.

	Date	Time of arrival
Please indicate what time you arrived at Premier Banqueting London today.	2/04/22	9.30

How did you travel here today?	Walk	Cycle	Car	Taxi/Uber	Bus	Coach	Train
			X				

If you arrived by car/taxi/uber, how many other guests were in with you? If you were on your own, please say so.	3
--	---

If you were the 'car driver', where did you park? Please be as accurate as possible.	Car Park
--	----------

	0-15mins	16-30	30-45	45-60	over 60
How long did it take you to get here today?		X			

So that we can see where our customers travel from, can you tell us where you were immediately before you travelled here today?	Place Name or Postcode
	WATFORD

Are you staying overnight as part of your attendance at this event?	No	With family/friends	Elswhere e.g Hotel

How many nights will you be staying?	
--------------------------------------	--

Will you be dining out (other than at this event) as part of your trip? If yes, on how many occasions will you be spending on food and drink?	
---	--

Where do you live?	Town	Country

Travel Survey Questionnaire. Premier Banqueting London Ltd will be relocating. We are trying to determine the travel patterns of our guests to help with our planning application. Please help us by answering the questions below as fully as possible.

	Date	Time of arrival
Please indicate what time you arrived at Premier Banqueting London today.	2/04/22	9am.

How did you travel here today?	Walk	Cycle	Car	Taxi/Uber	Bus	Coach	Train
			X				

If you arrived by car/taxi/uber, how many other guests were in with you? If you were on your own, please say so.	4
--	---

If you were the 'car driver', where did you park? Please be as accurate as possible.	CAR PARK
--	----------

	0-15mins	16-30	30-45	45-60	over 60
How long did it take you to get here today?	X				

So that we can see where our customers travel from, can you tell us where you were immediately before you travelled here today?	Place Name or Postcode
	QUEENS LURK

Are you staying overnight as part of your attendance at this event?	No	With family/friends	Elswhere e.g Hotel

How many nights will you be staying?	
--------------------------------------	--

Will you be dining out (other than at this event) as part of your trip? If yes, on how many occasions will you be spending on food and drink?	
---	--

Where do you live?	Town	Country

32 PEOPLE

Travel Survey Questionnaire. Premier Banqueting London Ltd will be relocating. We are trying to determine the travel patterns of our guests to help with our planning application. Please help us by answering the questions below as fully as possible.

	Date	Time of arrival
Please indicate what time you arrived at Premier Banqueting London today.	2/04	12pm

How did you travel here today?	Walk	Cycle	Car	Taxi/Uber	Bus	Coach	Train
						X	

If you arrived by car/taxi/uber, how many other guests were in with you? If you were on your own, please say so.	32.
--	-----

If you were the 'car driver', where did you park? Please be as accurate as possible.	
--	--

	0-15mins	16-30	30-45	45-60	over 60
How long did it take you to get here today?					X

So that we can see where our customers travel from, can you tell us where you were immediately before you travelled here today?	Place Name or Postcode
	BROAD STREET BIRMINGHAM.

Are you staying overnight as part of your attendance at this event?	No	With family/friends	Elswhere e.g Hotel
			HOTEL

How many nights will you be staying?	2
--------------------------------------	---

Will you be dining out (other than at this event) as part of your trip? If yes, on how many occasions will you be spending on food and drink?	
---	--

Where do you live?	Town	Country

Appendix E



PARKSPACE
by **chantry**

✉ enquire@chantry.com

Chantry Corporation Ltd.
New Century House
Cordwallis Street
Maidenhead
Berkshire SL6 7BE

☎ +44 (0) 1628 778900
+44 (0) 1628 780394

Michael Jakacki, Associate Director
Unit 23, The Maltings
Roydon Road
Stanstead Abbots
Hertfordshire
SG12 8HG

Dear Michael,

Provision of Chantry Parkspace service at proposed wedding venue, LB Harrow

Thank you for requesting a Statement of Intent to confirm the suitability of the use of our Parkspace system for the proposed wedding venue located in LB Harrow, as discussed, and our intention to provide this service for the venue.

Our Parkspace platform was originally designed for airport parking. Over the last 4 years we have significantly invested in the product and created a version specifically designed for arenas, event stadiums and conference centres. Parkspace is an event driven solution allowing visitors to the venue to select single or multi day passes as well as booking multiple vehicles in the same transaction.

Here are some of the reasons our customers choose Chantry.

Reduced risk

We are a proven supplier with more than 30 years of experience.

We have a skilled team of staff who are experienced in supporting customers and can lead the way through project management to achieve rapid delivery of the required solution.

Providing the best online customer experience

As the most experienced supplier in the marketplace for pre-booking systems we know what works for your customers and are best placed to deliver the best experience.

Robust & secure solutions

Our solutions are extremely robust – they need to be able to handle more than 10 million cars a year. We have refined and developed the software to create operational efficiency and reduce risk of error or fraud. They provide visibility of action and audit trails.

We are a PCI Level 1 accredited Service Provider and have been since 2010. We are externally audited yearly and approved by NCC.

A hosted solution

Our solution is a Software as a Service (SaaS) and is fully hosted. This means it is very easy for you to implement into your business.

A 24/7 support desk

We recognise that our clients work 24 hours a day and likewise we provide a 24/7 service to all our clients. Providing the highest level of service is the very foundation our whole organisation is built upon.

Please find attached a Datasheet indicating some of the general features and credentials of our Parkspace system, including its intuitive design, 24/7 support, and data security.



As per our existing contracts, the Chantry Parkspace booking system is web based, allowing both easy access for guests (rather than, for instance, guests being required to download an app) and ensuring non-guests do not book a parking space at the site.

The spaces would be listed as 'free' to guests, with the venue management paying the necessary implementation and subscription fees to Chantry to operate the system. Guests would select the day of the event they are attending and then proceed to book their space, with the process completed in just a few clicks. Their space would then be booked for the appropriate duration of the event, with guests receiving email confirmation of their booking, having provided an email address; all inputted data would be securely held in line with GDPR requirements.

The venue management would be able to manage the number of parking spaces available to be booked.

If necessary, an ANPR system linked to the software could be implemented so that only guests that have booked a space are able to access the site. Although, as I understand, the specific circumstances of the venue may dictate the use of personnel – provided by the venue management either directly or via a separate contractor (i.e. not provided by Chantry) – to manage access and parking at the site. Any integrations, such as to an ANPR system, would be at additional cost to the indicative fees provided below.

For indicative purposes, the fees for our provision of the parking booking service described above would be circa £15,000 for implementation of the system, plus maintenance costs of circa £1,000 per month. The matter of fees can be discussed further in due course, but for now, please take this letter and the information provided herein as confirmation of the suitability of our Parkspace system to facilitate the smooth operation of parking at the venue, and our intention to provide this service to the venue management.

We look to forward to working with you.

Yours sincerely,
Theresa Hughes
Managing Director



Parkspace Solution

Chauntry Parkspace™ is the world's most successful online reservation system for parking. It gives you the tools you need to have real control of your car park. Delivering both immediate and long-term improvements in your parking revenue, car park utilisation and customer satisfaction.

Suitable For

Airports



Shopping Centres



Event Centres



Sports Arenas



Parking Operators



Why Introduce Pre-Book?

Know Your Customers

Understand who your customers are, when they travel and how often. Once you know who your customers are you can regularly communicate with them.

Best Customer Experience

Simplifies the car park experience for the customer. There is no ticket to take, no money to find to pay.

Increase Revenues

With greater visibility of your bookings. You can sell more, at a better price.

Sell More

Offer upgrades, valet parking and other ancillary products or services.



Chantry Parkspace Solution Features



Intuitive Booking Tool

Simple booking tool that allows consumers to check availability and prepay for their parking. Attractively designed, and compatible with the look and feel of your website it reinforces your brand values.



Upsell

Parkspace™ is optimised to increase the value of the basket. We provide sophisticated functionality to offer customers the opportunity to purchase a higher priced product or to add additional items, such as valet pick up to the booking.



Yield Management Tools

Parkspace™ has a full range of options to ensure you price pre-book products at the most effective rates.



Business Analytics

Comprehensive reporting options. Real time performance dashboard. Transaction, occupancy and conversion report are just some readily available. Plus, with the ability to build your own reports, you have full visibility.



Customer Self-Management

A full 'Manage my Booking' tool, which allows your customers to manage their purchases online, whenever they like and wherever they are.



Email Marketing

Inbuilt marketing tools enable you to simply and quickly promote products, generate demand, upsell from your customer database.



Ticketless Parking

Parkspace™ integrates with your existing barrier equipment to allow for ticketless entry and exit via Credit Card, LPR, Bar Code or PIN code.

Why Choose Chantry For Pre-Book Parking?



Seamless Booking Experience

Optimised for all devices, of all sizes, on any platform. If you want full control utilise our full suite of APIs to manage your own front end



Leading Technology Integrator

We are already integrated with with countless barrier suppliers, payment service providers and other 3rd party systems. We give you the choice and flexibility to decide what is best for your



Proven Technology

With over 80 clients worldwide, from major international airport groups to small car park operators, our solution is demonstrably scalable, robust and reliable.



The Experience

Our team has unrivalled experience in the design, development and support of reservation systems for parking.



24x7 Support

We are on hand to offer help and assistance 24x7.



PCI Compliant

We provide complete security of all your data and are PCI Level 1 compliant

About Chantry

Chantry is the world's leading provider of online booking systems for parking. We've made more money for more airports, shopping centres, event venues and car parks than any other system supplier.

Running car parks can be very simple. But running one well, at the highest possible yield is a complex job.

Chantry has a 30 year track record of building systems that not only allow you to maximise your parking revenues but also engage with your customers ahead of their arrival.

We work with major companies across the world and as a result we have considerable expertise and knowledge to help you make parking your most significant revenue stream.

Get In Touch

Email: enquire@chantry.com

Telephone: +44 (0)1628 778 900

Website: www.chantry.com

Appendix F

08006 985 589

08448 735620

08448 735621

www.valetparked.co.uk

sales@valetparked.co.uk

Sales and bookings

all other enquiries

fax

Website

email

valetparked.co.uk

505 London Road

Camberley

Surrey

GU15 3JE

valetparked.co.uk Ltd - Co No:-10636020

For the attention of Ben McKeown
EAS Transport Planning Ltd
Senior Transport Planner
Unit 23, The Maltings,
Roydon Road,
Stanstead Abbots,
Hertfordshire, SG12 8HG

BY EMAIL ONLY

ben.mckeown@eastp.co.uk

May 16, 2022

Dear Ben,

Re: Valet parking service for West London venue.

Ref: RJMVALETPARKEDMCKEOWNBEN160522

Thank you for your enquiry concerning the services we offer for the venue in West London, I am very pleased to hear from you.

We would be very happy to provide our services, with specific focus on this venue. As we outlined our service is entirely bespoke, this means that we quote precisely upon the specific needs of the client.

However, our services do have some fundamentals that remain, regardless of the event size, location or timescales.

For example:

- We have an extensive track record of managing and executing a variety of long term, short term and various sized fixed site valet parking solutions.
- Our expertise means we plan meticulously, execute precisely and perform efficiently.
- All events are specific location/event insured using our valet parking insurance and so NOT a (invalid for this profession) motor trade policy
- We can provide fully qualified advanced drivers for specific clients/cars
- We work on a tried and tested formula of 1 parker for every 8 cars arriving
- We offer a full traffic management system, where arriving cars, taxis and coaches are directed, stacked, parked and exited to help prevent both public road disruption and traffic congestion.
- Our service includes a car park management system, where we are able to achieve an enhanced parking capacity through innovative use of the available space and resources, thus eliminating the need for enlarged hardstanding spaces.
- We can provide temporary and protective covers to allow parking on grass and other delicate surfaces, whilst protecting the long term condition of the grass/surface.
- We provide transport to and from the venue for all our staff to ensure simultaneous and uninterrupted arrival for events, always 2 hours before the official event start. This also allows for a staff briefing, venue walk around, equipment set up and run through of the pre-dispatched event planner
- All our parkers are uniformed, over 25, fully licensed, experienced with us and fully comfortable with both HNW and Ultra HNW clients and their usual types of cars
- All parkers are provided with foldable e-bikes that allow efficient, stress free and a presentable appearance of moving to and from parking and meet and greet points

- We provide all necessary (including radio communication for all parkers, bespoke signage, podiums, ropes and stanchions, individual key boxes, bespoke tickets and lighting and local useful information for attending guests) equipment and furniture during events
- We provide our own food, drink (we have our own fridge and power station) and meals to our staff throughout events
- We can provide a number of optional extras, including separate parking locations, cloakroom services, chauffeurs (for Brides, grooms etc), boutique fully licensed and SIA approved security personnel, outdoor heating, traffic marshals and much more
- We are very keen to take full ownership of booked events when on site so that we can organise, manage and efficiently expedite the arriving and departing traffic, guests, taxis/Ubers and other non event traffic and efficiently overcome any challenges that occur on the day with minimum if any disruption, to the client.

I do hope this is of interest and indeed provides a sufficient overview of our service. We would be very pleased to provide a more in-depth analysis with drawings where necessary should you wish.

If there are any queries, please do not hesitate to contact me personally.

We look forward to serving you.

Kind regards,
valetparked.co.uk Ltd
matt williams

manager

valetparked.co.uk Ltd

sales@valetparked.co.uk

Contact

London

Network Building,
97 Tottenham Court Road,
London W1T 4TP.
Tel: 020 7580 7373

Bristol

5th Floor, 4 Colston Avenue,
Bristol BS1 4ST
Tel: 0117 203 5240

Cardiff

Helmont House, Churchill Way,
Cardiff CF10 2HE
Tel: 029 2072 0860

Exeter

6 Victory House,
Dean Clarke Gardens,
Exeter EX2 4AA
Tel: 01392 422 315

Birmingham

Great Charles Street,
Birmingham B3 3JY
Tel: 0121 2895 624

Manchester

Oxford Place, 61 Oxford Street,
Manchester M1 6EQ.
Tel: 0161 228 1008

Leeds

7 Park Row, Leeds LS1 5HD
Tel: 0113 512 0293

Bonn

Stockenstrasse 5, 53113,
Bonn, Germany
Tel: +49 176 8609 1360
www.vectos.eu

Registered Office

Vectos (South) Limited
Network Building,
97 Tottenham Court Road,
London W1T 4TP
Company no. 7591661