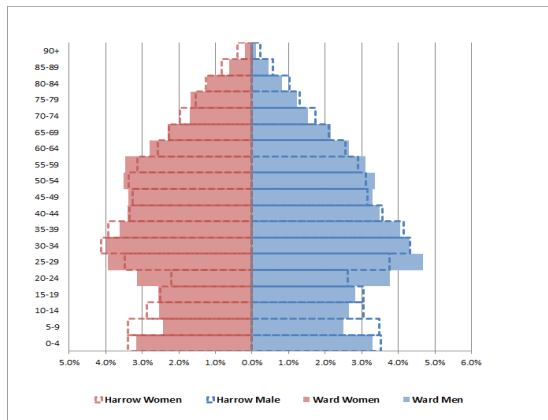




Kenton East



Compared to Harrow, Kenton East has a higher proportion of early working age individuals (20- 29 year olds).

Population



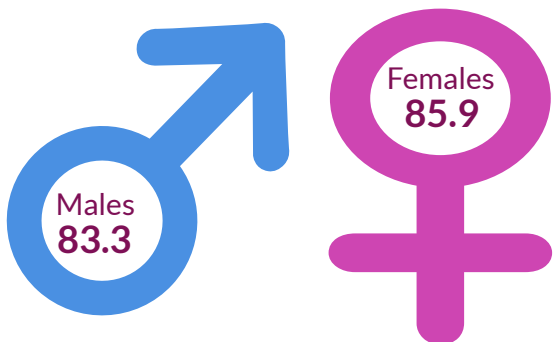
11,398
residents in 2019

Ethnic background



residents are from any other ethnic group other than White (2011)

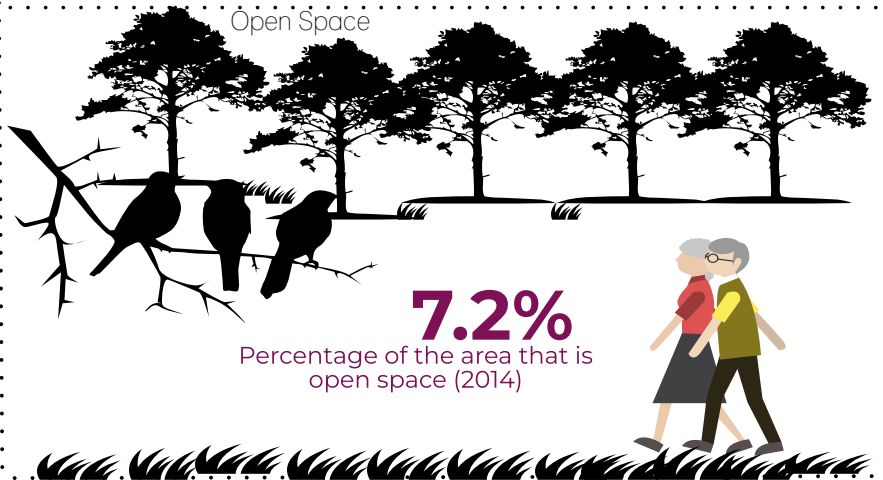
Life expectancy at birth



The male life expectancy at birth in Kenton East is 83.3 years, which is lower than the Harrow average of 82.9 years (2015-2019).

The female life expectancy at birth in Kenton East is 85.9 years, which is similar to the Harrow average of 86.0 years (2015-2019)

Open Space



Crime Rate

36.2
per 1,000
Crime rate 2020/21

Harrow (59.6 per 1,000)



Births



80.7

General Fertility rate
(2015-2019)

Live births per 1,000 women
Harrow 73.7 per 1,000

START WELL

Low birth weight



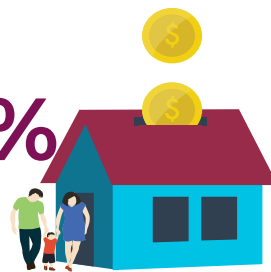
6.4%

Percentage of full term babies
weighing less than 2.5 kilos
(2015 -2019)

Harrow 8%

Child Poverty

12.6%



Percentage of children
under the age of 16 living in
low income families
(2019)

Harrow 12.3%

School Readiness

76.9%

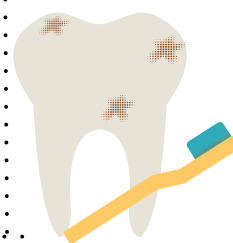
The percentage of children
achieving a good level of
development at age 5

Harrow 73.8%



Tooth decay

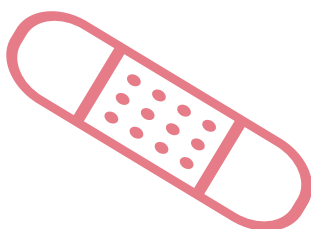
51



Number of 5 year
olds free from
tooth decay

CYP admission for injury

8.5



Emergency admissions for under 5s
admitted to hospital
(2015/16-2019/20)

per 10,000 0-4 population
Harrow 7.4 per, 10,000

Childhood Obesity

25%



Obese children (10-11 years)
Harrow 20.5%

GCSE Achievement



46%

GCSEs achieved (5 A*-C
including English & Maths)
(2019/20)

Harrow 50.9%

Obesity

5,192

Estimated number of adults
overweight or obese
(2019/20)



LIVE WELL

5,550

Estimated number of adults
eating 5 or more fruit and
veg a day
(2019/20)



Healthy Eating

Coronavirus Infections



1,494

Rate per 10,000
population
(2019)

Harrow 1,552 per 10,000
population

Smoking

931



Estimated number of
adult smokers
(2019)

Unemployment rate

1.8%

Percentage working age receiving out of work benefits 2019



Harrow 2%

WORK WELL

Long-term unemployment

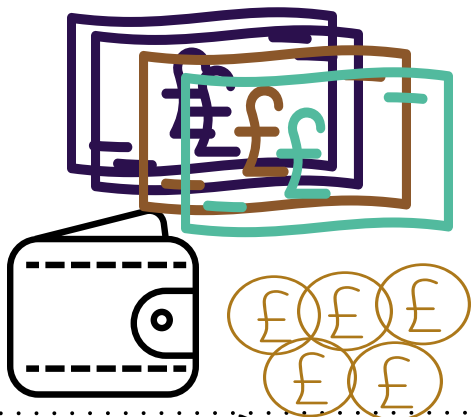
2.0

Long term unemployment rate per 1,000 working age 2019/20

Harrow 1.8 per 1,000



Household income



£32k

Median household income estimate (2012/13)

Median House price



£600k

Median house price(2021)

Harrow £454 k

Premature death

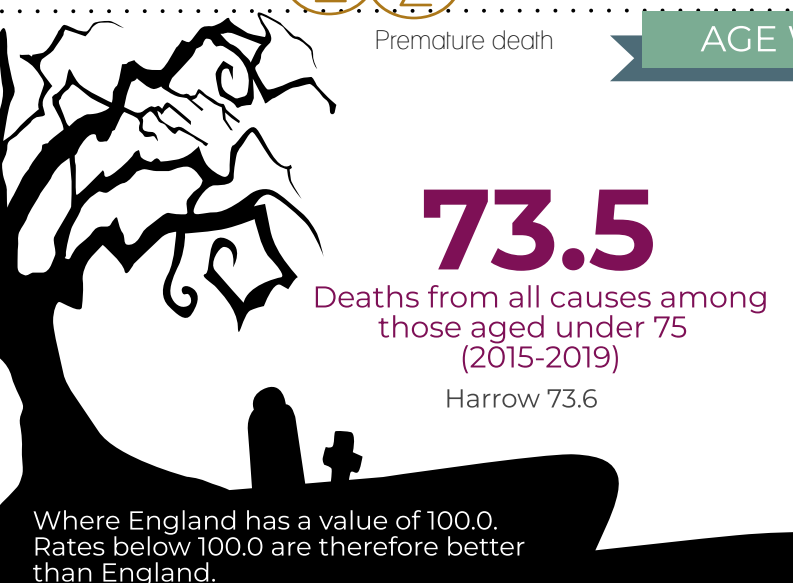
AGE WELL

Long-term health problem or disability: Day-to-day activities

73.5

Deaths from all causes among those aged under 75 (2015-2019)

Harrow 73.6



Where England has a value of 100.0. Rates below 100.0 are therefore better than England.



7%

LIMITED A LOT

9%

LIMITED A LITTLE

84%

NOT LIMITED

84% of resident reported that their daily activities were not limited by a long-term health problem or disability. This is lower than Harrow (85%), London (86%) and England (82%).

Independent living

22.8%

People aged 65+ who live alone (2011)

Harrow 26.7%



Older people in deprivation

25.5%

Percentage of older people living in deprivation (2019)

Harrow 17.3%



Deaths due to main causes in Harrow



79.8

Deaths due to cancer



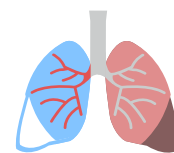
118.6

Deaths due to coronary heart disease



53.1

Deaths due to stroke



64.2

Deaths due to respiratory diseases

Where England has a value of 100.0. Rates below 100.0 are therefore better than England.

DATA SOURCES

Population

1. Square kilometres - GLA London Datastore (<https://data.london.gov.uk/dataset/ward-profiles-and-atlas>)
2. GP practices - Harrow CCG
3. Pharmacies - Harrow CCG
4. Dentists - NHS England
5. Children's Centres - Harrow Council
6. Schools - Harrow Council
7. Population Pyramid - Office for National Statistics (ONS) 2019
8. Population - GLA London Datastore (<https://data.london.gov.uk/dataset/ward-profiles-and-atlas>)
9. BAME - GLA London Datastore (<https://data.london.gov.uk/dataset/ward-profiles-and-atlas>)
10. Life expectancy - Local Health (<http://www.localhealth.org.uk/>)
11. Open space - GLA London Datastore (<https://data.london.gov.uk/dataset/ward-profiles-and-atlas>)
12. Crime rate - GLA London Datastore (<https://data.london.gov.uk/dataset/ward-profiles-and-atlas>)

Start Well

13. General Fertility Rate - Local Health (<http://www.localhealth.org.uk/>)
14. Low birth weight - Local Health (<http://www.localhealth.org.uk/>)
15. Child poverty - Local Health (<http://www.localhealth.org.uk/>)
16. School readiness - Local Health (<http://www.localhealth.org.uk/>)
17. Tooth decay - Modelled estimate from Dental Public Health Epidemiology Programme for England
18. Hospital admissions - Local Health (<http://www.localhealth.org.uk/>)
19. Childhood Obesity - Local Health (<http://www.localhealth.org.uk/>)
20. GCSE achievement - Harrow Council

Live Well

21. Adult obesity - Modelled Estimates from Public Health Outcomes Framework PHOF
22. Healthy eating - Modelled Estimates from Public Health Outcomes Framework PHOF
23. Coronavirus Infections - UKSHA 2021
24. Adult smoking - Modelled estimates from Annual Population Survey 2020/21

Work Well

25. Unemployment rate- GLA London Datastore (<https://data.london.gov.uk/dataset/ward-profiles-and-atlas>)
26. Long term employment - GLA London Datastore (<https://data.london.gov.uk/dataset/ward-profiles-and-atlas>)
27. Household income - GLA London Datastore (<https://data.london.gov.uk/dataset/ward-profiles-and-atlas>)
28. Median House Price - GLA London Datastore (<https://data.london.gov.uk/dataset/ward-profiles-and-atlas>)

Age Well

29. Deaths under 75 - Local Health (<http://www.localhealth.org.uk/>)
30. Long term health problem - Nomis (<https://www.nomisweb.co.uk/>)
31. Independent Living - Local Health (<http://www.localhealth.org.uk/>)
32. Elder deprivation - Local Health (<http://www.localhealth.org.uk/>)
33. Main cause of death - Local Health (<http://www.localhealth.org.uk/>)