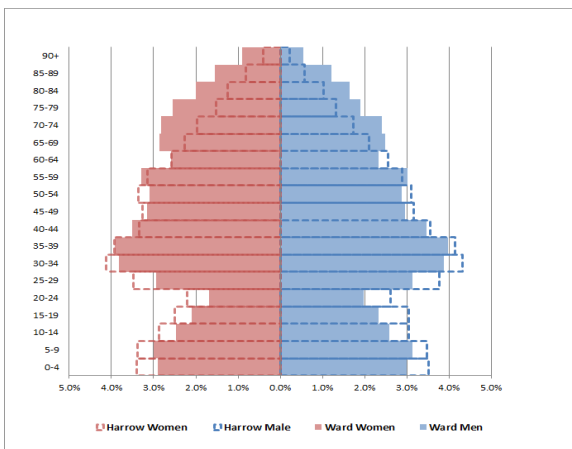




Stanmore Park

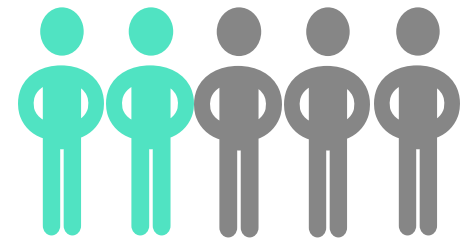


Population



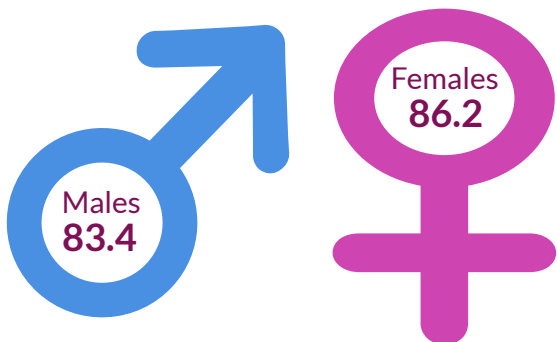
11,910
residents in 2019

Ethnic background



2 in 5
residents are from an ethnic group other than White (2011)

Life expectancy at birth



The male life expectancy at birth in Stanmore Park is 83.4 years, which is the similar to the Harrow average of 82.9 years (2015-2019).

The female life expectancy at birth in Stanmore Park is 86.2 years, which is slightly higher than the Harrow average of 86.0 years (2015-2019)

Open Space



45.8%
Percentage of the area that is open space (2014)

Crime Rate

46.5
Crime rate per 1,000
2020/21

Harrow (59.6 per 1,000)



Births



74.5

General Fertility Rate
(2015-2019)

Live births per 1,000 women
Harrow 73.7 per 1,000

START WELL

Low birth weight

9.9%

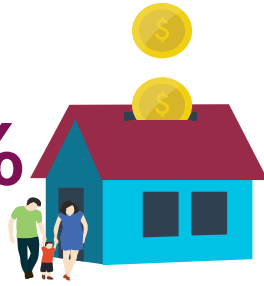


Percentage of full term babies
weighing less than 2.5 kilos
(2015 -2019)

Harrow 8.0%

Child Poverty

13.0%



Percentage of children under
the age of 16 living in low
income households
(2019)

Harrow 12.3%

School Readiness

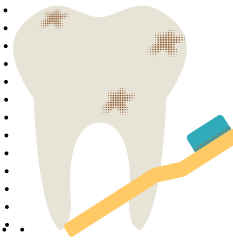
78.4%

The percentage of children
achieving a good level of
development at age 5

Harrow 73.8%



Tooth decay

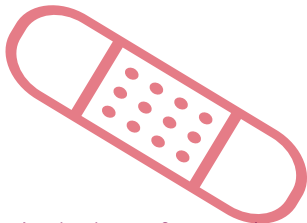


63

Number of 5 year
olds free from
tooth decay

CYP admission for injury

8.1



Emergency admissions for under 5s
admitted to hospital for injuries
(2015/16- 19/20)

per 10,000 0-4 population
Harrow 7.4 per 10,000

Childhood Obesity

20%



Obese children (10-11 years)

Harrow 20.5%

GCSE Achievement



49.4%

GCSEs achieved (5 A*-C
including English & Maths)
2019/20

Harrow 50.9%

Obesity

5,705

Estimated number of
adults overweight or obese
(2019/20)



LIVE WELL

6,099

Estimated number of adults
16+ eating 5 or more fruit and
veg a day
(2019-2020)



Healthy Eating

Coronavirus Infections



1,456

Rate per 10,000 population
(2021)

Harrow 1,552 per 10,000
population

Smoking

1023



Estimated number of
smokers
(2019)

Unemployment rate

2.1%

Percentage of working age receiving out of work benefits (2019/20)



Harrow 2%

WORK WELL

Long term unemployment

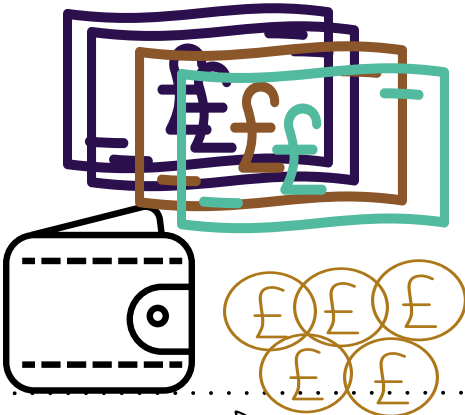
1.8%

Long term unemployment rate per 1,000 working age 2019/20

Harrow 2%



Household income



£39k

Median household income estimate (2012/13)

Harrow £38k

Median House price



£530k

Median house price (2014)

Harrow £454k

AGE WELL

Premature death

76.4

Deaths from all causes among those aged under 75 (2015-2019)

Harrow 73.6

Where England has a value of 100.0. Rates below 100.0 are therefore better than England.

Long-term health problem or disability: Day-to-day activities



10%

LIMITED A LOT



9%

LIMITED A LITTLE



81%

NOT LIMITED

81% of resident reported that their daily activities were not limited by a long-term health problem or disability. This is lower than Harrow (85%) and London (86%) but lower than England (82%).

Independent living

25.5%

People aged 65+ who live alone (2011)

Harrow 26.7%



Older people in deprivation

14.0

Percentage of older people living in deprivation

Harrow 17.3%



Number of premature deaths by main causes in Harrow



72.5

Due to cancer



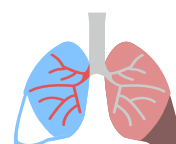
80.8

Due to coronary heart disease



49.7

Due to stroke



58.0

Due to respiratory diseases

Where England has a value of 100.0. Rates below 100.0 are therefore better than England.

DATA SOURCES

Population

1. Square kilometres - GLA London Datastore (<https://data.london.gov.uk/dataset/ward-profiles-and-atlas>)
2. GP practices - Harrow CCG
3. Pharmacies - Harrow CCG
4. Dentists - NHS England
5. Children's Centres - Harrow Council
6. Schools - Harrow Council
7. Population Pyramid - Office for National Statistics(ONS) 2019
8. Population - GLA London Datastore (<https://data.london.gov.uk/dataset/ward-profiles-and-atlas>)
9. BAME - GLA London Datastore (<https://data.london.gov.uk/dataset/ward-profiles-and-atlas>)
10. Life expectancy - Local Health (<http://www.localhealth.org.uk/>)
11. Open space - GLA London Datastore (<https://data.london.gov.uk/dataset/ward-profiles-and-atlas>)
12. Crime rate - GLA London Datastore (<https://data.london.gov.uk/dataset/ward-profiles-and-atlas>)

Start Well

13. General Fertility Rate - Local Health (<http://www.localhealth.org.uk/>)
14. Low birth weight - Local Health (<http://www.localhealth.org.uk/>)
15. Child poverty - Local Health (<http://www.localhealth.org.uk/>)
16. School readiness - Harrow Council
17. Tooth decay - Modelled estimate from Dental Public Health Epidemiology Programme for England
18. Hospital admissions - Local Health (<http://www.localhealth.org.uk/>)
19. Childhood Obesity - Local Health (<http://www.localhealth.org.uk/>)
20. GCSE achievement - Harrow Council

Live Well

21. Adult obesity - Modelled estimates from Public Health Outcomes Framework (PHOF)
22. Healthy eating - Local Health (<http://www.localhealth.org.uk/>)
23. Coronavirus Infections - UKSHA 2021
24. Adult smoking - Modelled estimates from Annual Population Survey 2019

Work Well

25. Unemployment rate - GLA London Datastore (<https://data.london.gov.uk/dataset/ward-profiles-and-atlas>)
26. Long term unemployment - GLA London Datastore (<https://data.london.gov.uk/dataset/ward-profiles-and-atlas>)
27. Household income - GLA London Datastore (<https://data.london.gov.uk/dataset/ward-profiles-and-atlas>)
28. House Price - GLA London Datastore (<https://data.london.gov.uk/dataset/ward-profiles-and-atlas>)

Age Well

29. Deaths under 75 - Local Health (<http://www.localhealth.org.uk/>)
30. Long term health problem - Nomis (<https://www.nomisweb.co.uk/>)
31. Independent Living - Local Health (<http://www.localhealth.org.uk/>)
32. Elder deprivation - Local Health (<http://www.localhealth.org.uk/>)
33. Main cause of death - Local Health (<http://www.localhealth.org.uk/>)