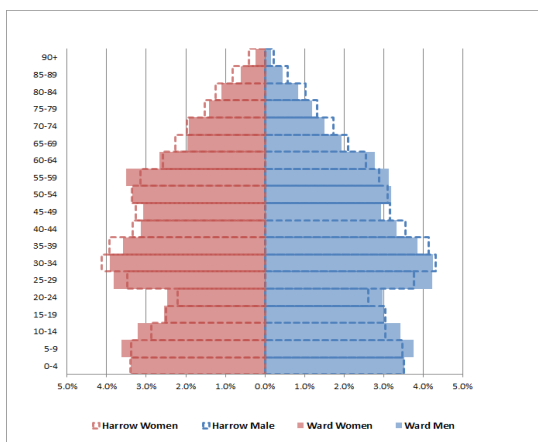
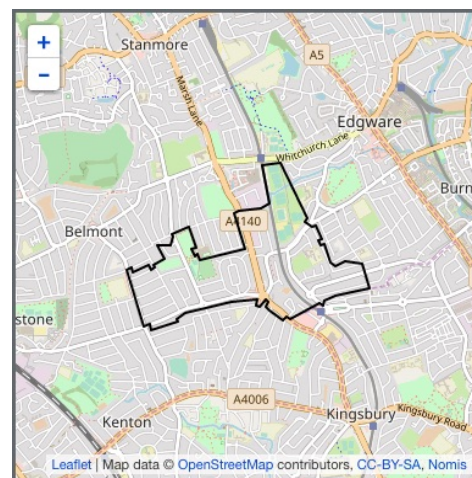
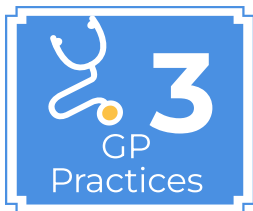




# Queensbury



Compared to Harrow, Queensbury has a lower proportion of working age adults aged 30-49 years. The ward also has a slightly higher proportion of school aged children (5-14 years).

Population



**12,562**  
residents in 2019

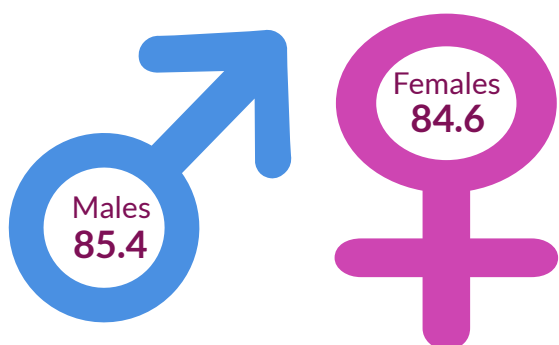
Ethnic background



**3 in 4**

residents are of ethnic background other than White (2011)

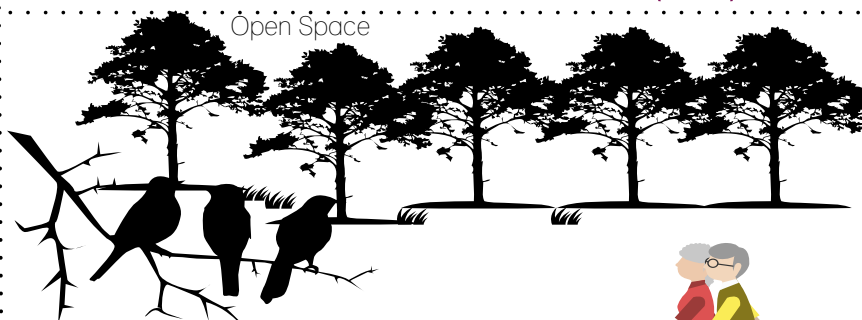
Life expectancy at birth



The male life expectancy at birth in Queensbury is 85.4 years, which is similar to the Harrow average of 84.6 years (2015-2019).

The female life expectancy at birth in Queensbury is 84.6 years, which is slightly lower than the Harrow average of 86 years (2015-2019)

Open Space



**23.3%**  
Percentage of the area that is open space (2014)

Crime Rate

**40.9**  
Crime rate 2014/15

Harrow 59.6 per 1,000



## Births



# 82.7

General Fertility rate  
(2015-2019)

Live births per 1,000  
women  
Harrow 73.7 per 1,000

## START WELL

### Low birth weight

# 8.7%



Percentage of full term babies  
weighing less than 2.5 kilos  
2015-2019

Harrow 59.6 per 1,000

## Child Poverty

# 9.7%



Percentage of children  
under the age of 16 living in  
low income households  
(2019)

Harrow 12.3%

## School Readiness

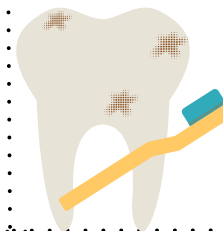
# 73.0%

The percentage of children  
achieving a good level of  
development at age 5



Harrow 73.8%

## Tooth decay

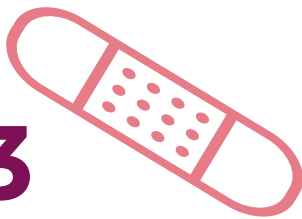


# 73

Number of 5 year  
olds free from  
tooth decay

## CYP admission for injury

# 7.3



Emergency admissions for under 5s  
admitted to hospital for injuries  
(2015/16-19/20)

per 10,000 0-4 population  
Harrow 7.4 per 10,000

## Childhood Obesity

# 21.0%



Obese children (10-11 years)  
Harrow 20.5%

## GCSE Achievement



# 50.0%

GCSEs achieved (5 A\*-C  
including English & Maths)  
2019/20

Harrow 50.9%

## Obesity

# 5,460

Estimated number of adults  
overweight or obese  
(2019/20)



## LIVE WELL

# 5,837

Estimated number of adults  
16+ eating 5 or more fruit and  
veg a day  
(2019-2020)

## Coronavirus Infections



# 1,557

Rate per 10,000  
population  
(2019/20)

Harrow 1,552 per  
10,000 population

## Healthy Eating



## Smoking

# 979



Estimated number of  
smokers  
(2019/20)

Unemployment rate

**1.4%**

Percentage working age receiving out of work benefits



Harrow 2%

WORK WELL

Long term unemployment

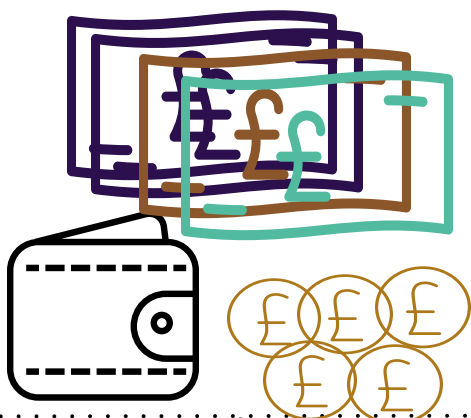
**0.8%**

Long term unemployment rate per 1,000 working age (2019/20)

Harrow 1.8 per 1,000



Household income



**£35k**

Median household income estimate (2012/13)

Harrow £38k

Median House price



**£432k**

Median house price (2021)

Harrow £454k

AGE WELL

Premature death

**60.9**

Deaths from all causes among those aged under 75 (2015-2019)

Harrow 73.6

Where England has a value of 100.0. Rates below 100.0 are therefore better than England.

Long-term health problem or disability: Day-to-day activities



**6%**

LIMITED A LOT



**8%**

LIMITED A LITTLE



**86%**

NOT LIMITED



6.4% of resident reported that their daily activities were not limited by a long-term health problem or disability. This is lower than Harrow (6.8%), London (6.7%) and England (8.3%).

Independent living

**20.8%**

People aged 65+ who live alone (2011)

Harrow 26.7%



Older people in deprivation

**20.3%**

Number of older people living in deprivation (2019)

Harrow 17.3%



Number of premature deaths by main causes in Harrow



**55.6**

Due to cancer



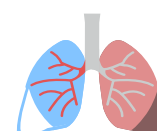
**92.5**

Due to coronary heart disease



**66.6**

Due to stroke



**106.5**

Due to respiratory diseases

Where England has a value of 100.0. Rates below 100.0 are therefore better than England.

## DATA SOURCES

### Population

1. Square kilometres - GLA London Datastore (<https://data.london.gov.uk/dataset/ward-profiles-and-atlas>)
2. GP practices - Harrow CCG
3. Pharmacies - PNA 2015-2018 ([http://www.harrow.gov.uk/download/downloads/id/6351/harrow\\_pna\\_part1](http://www.harrow.gov.uk/download/downloads/id/6351/harrow_pna_part1))
4. Dentists - NHS England
5. Children's Centres - Harrow Council
6. Schools - Harrow Council
7. Population Pyramid - Office for National Statistics(ONS) 2015
8. Population - GLA London Datastore (<https://data.london.gov.uk/dataset/ward-profiles-and-atlas>)
9. BAME - GLA London Datastore (<https://data.london.gov.uk/dataset/ward-profiles-and-atlas>)
10. Life expectancy - Local Health (<http://www.localhealth.org.uk/>)
11. Open space - GLA London Datastore (<https://data.london.gov.uk/dataset/ward-profiles-and-atlas>)
12. Crime rate - GLA London Datastore (<https://data.london.gov.uk/dataset/ward-profiles-and-atlas>)

### Start Well

13. Births - Modelled estimates from ONS 2015
14. Low birth weight - Local Health (<http://www.localhealth.org.uk/>)
15. Child poverty - Local Health (<http://www.localhealth.org.uk/>)
16. School readiness - Local Health (<http://www.localhealth.org.uk/>)
17. Tooth decay - Modelled estimate from Dental Public Health Epidemiology Programme for England
18. Hospital admissions -Local Health (<http://www.localhealth.org.uk/>)
19. Childhood Obesity - Local Health (<http://www.localhealth.org.uk/>)
20. GCSE achievement - Local Health (<http://www.localhealth.org.uk/>)

### Live Well

21. Adult obesity - Public Health Outcomes Framework (PHOF)
22. Healthy eating - Public Health Outcomes Framework (PHOF)
23. Coronavirus infections - UKSHA 2021
24. Adult smoking - Modelled estimates from Annual Public Survey 2019

### Work Well

25. Unemployment rate - GLA London Datastore (<https://data.london.gov.uk/dataset/ward-profiles-and-atlas>)
26. Long term unemployment - GLA London datastore (<https://data.london.gov.uk/dataset/ward-profiles-and-atlas>)
27. Household income - GLA London Datastore (<https://data.london.gov.uk/dataset/ward-profiles-and-atlas>)
28. House Price - GLA London Datastore (<https://data.london.gov.uk/dataset/ward-profiles-and-atlas>)

### Age Well

29. Deaths under 75 - Local Health (<http://www.localhealth.org.uk/>)
30. Long term health problem - Nomis (<https://www.nomisweb.co.uk/>)
31. Independent Living - Local health (<http://www.localhealth.org.uk/>)
32. Elder deprivation - Local Health (<http://www.localhealth.org.uk/>)
33. Main cause of death - Local Health (<http://www.localhealth.org.uk/>)