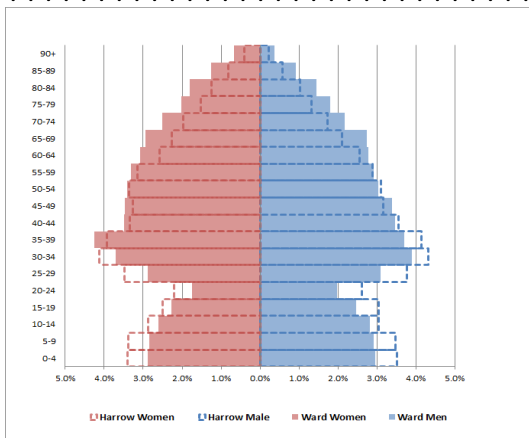
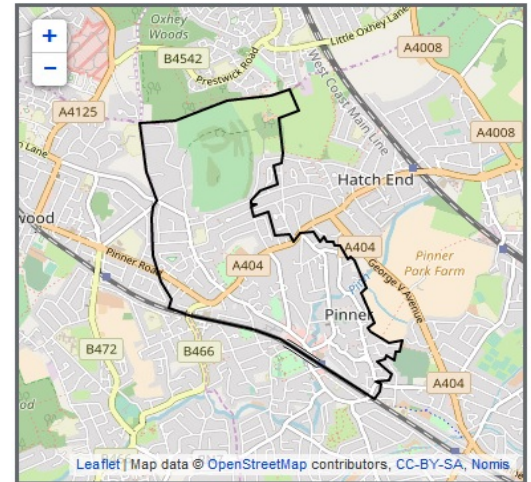




Pinner

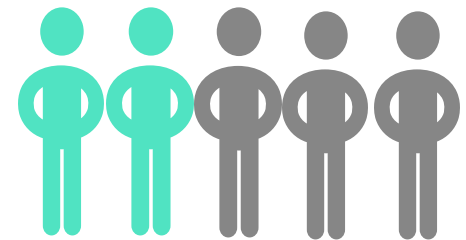


Compared to Harrow, Pinner has an older population. Women aged 35-39 years old make up a greater proportion of the population than men in this age group.



10,250
residents in 2019

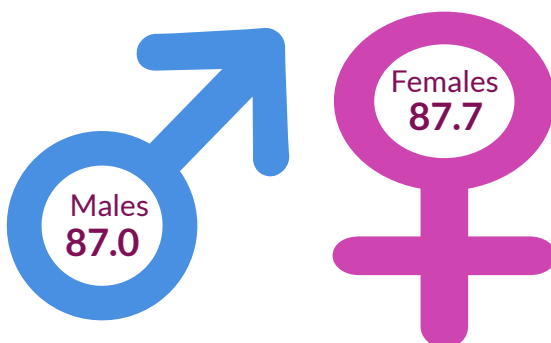
Ethnic background



2 in 5

residents are from any other ethnic group other than White (2011)

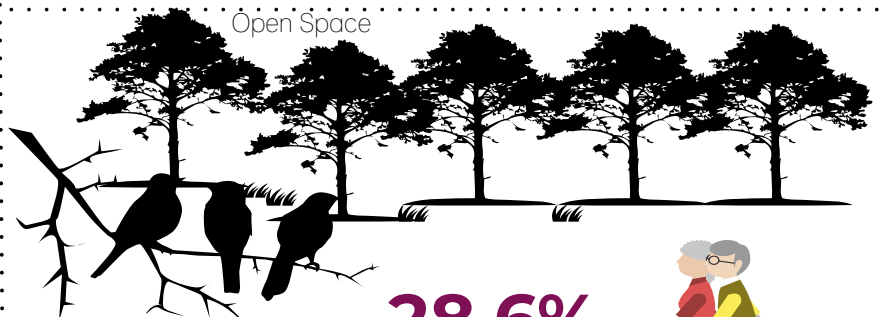
Life expectancy at birth



The male life expectancy at birth in Pinner is 87.0 years, which is higher than the Harrow average of 82.9 years (2015-2019).

The female life expectancy at birth in Pinner is 87.7 years, which is slightly higher than the Harrow average of 86.0 years (2015-2019)

Open Space



28.6%

Percentage of the area that is open space (2014)



Crime Rate

64.1
per 1,000
Crime rate
2020/21

Harrow 59.6 per 1000



Births



64.6

General Fertility rate
(2015-2019)

Live births per 1,000 women
Harrow 73.7 per 1,000

START WELL

Low birth weight

5.4%

Percentage of full term babies
weighing less than 2.5 kilos
(2015 -2019)

Harrow 8%



Child Poverty

10.7%

Percentage of children
under the age of 16 living in
low income households
(2019)

Harrow 12.3%



School Readiness

77.5%

The percentage of children
achieving a good level of
development at age 5
2019/20

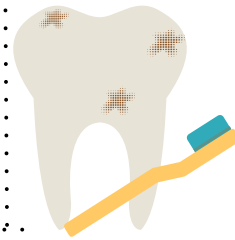
Harrow 73.8%



Tooth decay

51

Number of 5 year
olds free from
tooth decay

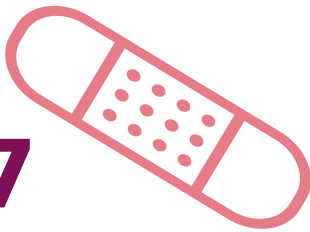


CYP admission for injury

7.7

Estimated admissions for under5s
admitted to hospital for injuries
2015/16-19/20)

per 10,000 0-4 population
Harrow 7.4 per 1,000



Childhood Obesity

17.8%

Obese children (10-11 years)
2017/18-19/20
Harrow 20.5%



GCSE Achievement



51.5%

GCSEs achieved (5 A*-C
including English & Maths)
2019/20

Harrow 50.9%

Obesity

4,826

Estimated number of
adults aged 16+
overweight or obese
(2019/20)



LIVE WELL

5,159

Estimated number of adults
16+ eating 5 or more fruit and
veg a day
(2019/20)

Coronavirus Infections



1,640

Rate of infections per
10,000 population
(2019)

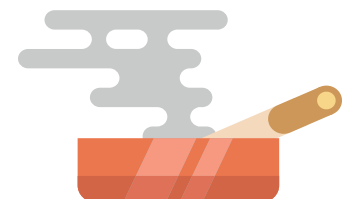
Harrow 1,552 per 10,000

Healthy Eating



Smoking

865



Estimated number of
smokers
(2019)

Unemployment rate

1.6%

Percentage working age receiving out of work benefits



Harrow 2%

WORK WELL



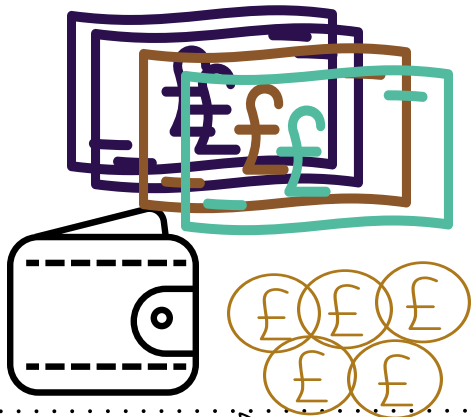
Long term unemployment

1.5

Long term unemployment rate per 1,000 working age 2019/20

Harrow 1.8 per 1,000

Household income



£43k

Median household income estimate (2012/13)

Harrow £38k

Median House price



£715k

Median house price (2021)

Harrow £454k

Premature death

AGE WELL

Long-term health problem or disability: Day-to-day activities

55.93

Deaths from all causes among those aged under 75 (2015-2019)

Harrow 73.6

Where England has a value of 100.0. Rates below 100.0 are therefore better than England.



84% of resident reported that their daily activities were not limited by a long-term health problem or disability. This is lower than Harrow (85%), London (86%) and England (82%).

Independent living

31.3%

People aged 65+ who live alone (2011)

Harrow 26.7



Older people in deprivation

10.3%

Number of older people living in deprivation 2019

Harrow 17.3%



Number of premature deaths by main causes in Harrow



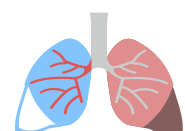
74.8



83.7



77.1



51.9

Due to cancer

Due to coronary heart disease)

Due to stroke

Due to respiratory diseases

Where England has a value of 100.0. Rates below 100.0 are therefore better than England.

DATA SOURCES

Population

1. Square kilometres - GLA London Datastore (<https://data.london.gov.uk/dataset/ward-profiles-and-atlas>)
2. GP practices - Harrow CCG
3. Pharmacies - Harrow CCG
4. Dentists - NHS England
5. Children's Centres - Harrow Council
6. Schools - Harrow Council
7. Population Pyramid - Office for National Statistics (ONS) 2015
8. Population - GLA London Datastore (<https://data.london.gov.uk/dataset/ward-profiles-and-atlas>)
9. BAME - GLA London Datastore (<https://data.london.gov.uk/dataset/ward-profiles-and-atlas>)
10. Life expectancy - Local Health (<http://www.localhealth.org.uk/>)
11. Open space - GLA London Datastore (<https://data.london.gov.uk/dataset/ward-profiles-and-atlas>)
12. Crime rate - GLA London Datastore (<https://data.london.gov.uk/dataset/ward-profiles-and-atlas>)

Start Well

13. General Fertility rate- Local Health (<http://www.localhealth.org.uk/>)
14. Low birth weight - Local Health (<http://www.localhealth.org.uk/>)
15. Child poverty - Local Health (<http://www.localhealth.org.uk/>)
16. School readiness - Harrow Council
17. Tooth decay - Modelled estimate from Dental Public HealthEpidemiology Programme for England
18. Hospital admissions - Modelled estimates from Hospital Episode Statistics
19. Childhood Obesity - Local Health (<http://www.localhealth.org.uk/>)
20. GCSE achievement - Harrow Council

Live Well

21. Adult obesity - Modelled estimates from Public Health Outcomes Framework PHOF
22. Healthy eating - Modelled estimates from Public Health Outcomes Framework PHOF
23. Coronavirus Infections - UKSHA 2021
24. Adult smoking - Modelled estimates from Annual Population Survey 2019

Work Well

25. Employment rate - GLA London Datastore (<https://data.london.gov.uk/dataset/ward-profiles-and-atlas>)
26. Long term unemployment - GLA London Datastore (<https://data.london.gov.uk/dataset/ward-profiles-and-atlas>)
27. Household income - GLA London Datastore (<https://data.london.gov.uk/dataset/ward-profiles-and-atlas>)
28. House Price - GLA London Datastore (<https://data.london.gov.uk/dataset/ward-profiles-and-atlas>)

Age Well

29. Deaths under 75 - Local Health (<http://www.localhealth.org.uk/>)
30. Long term health problem - Nomis (<https://www.nomisweb.co.uk/>)
31. Independent Living - Local Health (<http://www.localhealth.org.uk/>)
32. Elder deprivation - Local Health (<http://www.localhealth.org.uk/>)
33. Main cause of death - Local Health (<http://www.localhealth.org.uk/>)