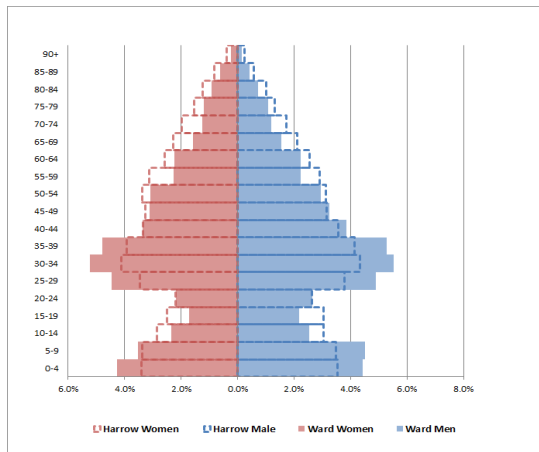
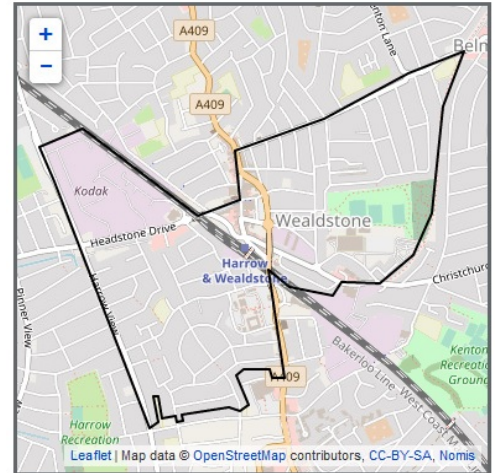


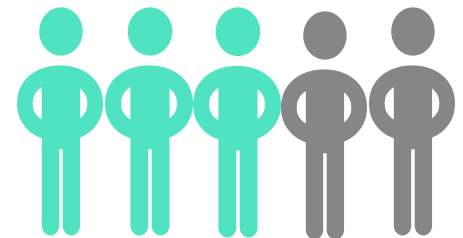


Marlborough



13,522
residents in 2015

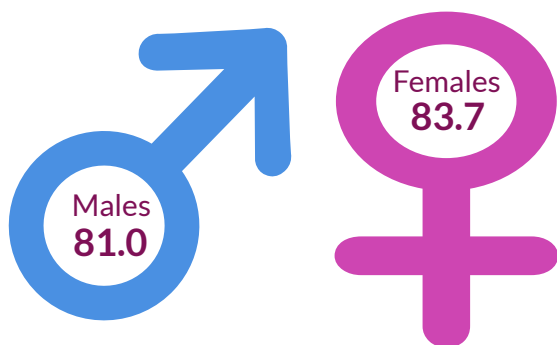
Ethnic background



3 in 5

residents are from any other ethnic group other than White (2011)

Life expectancy at birth



The male life expectancy at birth in Marlborough is 81.0 years, which is similar to the Harrow average of 82.9 years (2015-2019).

The female life expectancy at birth in Marlborough is 85.1 years, which is similar to the Harrow average of 86.0 years (2015-2019)

Open Space



8.3%

Percentage of the area that is open space (2014)



Crime Rate

70.8
per 1,000
Crime rate 2020/21

Harrow 59.5 per 1,000



Births



89.4

General Fertility rate
(2015-2019)

Live births per 1,000 women
Harrow 73.7 per 1,000

START WELL

Low birth weight

8.3%



Percentage of full term babies
weighing less than 2.5 kilos
(2015 -2019)
Harrow 8%

Child Poverty

12.2%



Percentage of children
under the age of 16 living in
low income households
(2019)

Harrow 12.3%

School Readiness

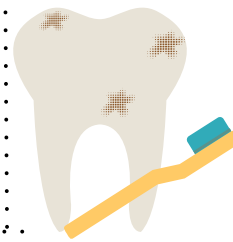
74.2%



The percentage of children
achieving a good level of
development at age 5
2019/20

Harrow 73.8%

Tooth decay

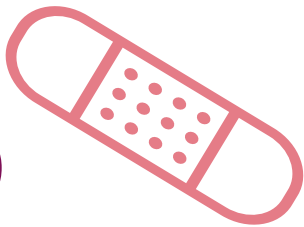


91

Number of 5 year
olds free from
tooth decay

CYP admission for injury

7.0



Estimated admissions for under 5s
admitted to hospital for injuries
(2015/6-19/20)

per 10,000 0-4 population
Harrow 7.4 per 10,000

Childhood Obesity

23.5%



Obese children (10-11 years)
Harrow 20.5%

GCSE Achievement



50.6%

GCSEs achieved (5 A*-C
including English & Maths)
2019/20

Harrow 50.9%

Obesity

6,528

Estimated number of adults
aged 16+ that are overweight
or obese
(2019/20)



LIVE WELL

6,871

Estimated number of adults
16+ eating 5 or more fruit and
veg a day
(20019/20)

Healthy Eating



Coronavirus Infections



1,371

Rate of infections per
10,000 population
(2019/20)

Harrow 1,552 per 10,000
population

Smoking

1,153



Estimated number of
smokers
(2019/20)

Unemployment rate

2.5%

Percentage of working age
receiving out of work benefits
2019



Harrow 2%

WORK WELL

Long term unemployment

2.1

Long term unemployment rate
per 1,000 working age
2019/20

Harrow 1.8 per 1,000



Household income



£34k

Median household
income estimate
(2012/13)

Harrow £38k

Median House price



£471k

Median house price(2021)

Harrow £454k

Premature death

AGE WELL

Long-term health problem or disability:
Day-to-day activities

90.9

Deaths from all causes among
those aged under 75
(2015-2019)

Harrow 73.6

Where England has a value of 100.0.
Rates below 100.0 are therefore better
than England.



7%

LIMITED A LOT



7%

LIMITED A LITTLE



86%

NOT LIMITED

86% of resident reported that their daily activities were not
limited by a long-term health problem or disability. This is similar
to London (86%), and higher than Harrow (85%) and England
(82%).

Independent living

27.6%

People aged 65+
who live alone
(2011)

Harrow 26.7%



Older people in deprivation

23.5%

Number of older people
living in deprivation
(2019)

Harrow 17.3%



Deaths due to main causes in Harrow



90.0

due to cancer



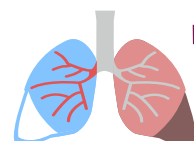
107.1

due to coronary heart
disease



124.0

due to stroke



75.4

due to respiratory
diseases

Where England has a value of 100.0. Rates below 100.0 are therefore better than England.

DATA SOURCES

Population

1. Square kilometres - GLA London Datastore (<https://data.london.gov.uk/dataset/ward-profiles-and-atlas>)
2. GP practices - Harrow CCG
3. Pharmacies - Harrow CCG
4. Dentists - NHS England
5. Children's Centres - Harrow Council
6. Schools - Harrow Council
7. Population Pyramid - Office for National Statistics (ONS) 2019
8. Population - GLA London Datastore (<https://data.london.gov.uk/dataset/ward-profiles-and-atlas>)
9. BAME - GLA London Datastore (<https://data.london.gov.uk/dataset/ward-profiles-and-atlas>)
10. Life expectancy - Local Health (<http://www.localhealth.org.uk/>)
11. Open space - GLA London Datastore (<https://data.london.gov.uk/dataset/ward-profiles-and-atlas>)
12. Crime rate - GLA London Datastore (<https://data.london.gov.uk/dataset/ward-profiles-and-atlas>)

Start Well

13. Births - Modelled estimates from ONS 2015
14. Low birth weight - Local Health (<http://www.localhealth.org.uk/>)
15. Child poverty - Local Health (<http://www.localhealth.org.uk/>)
16. School readiness - Local Health (<http://www.localhealth.org.uk/>)
17. Tooth decay - Modelled estimate from Dental Public Health Epidemiology Programme for England
18. Hospital admissions - Local Health (<http://www.localhealth.org.uk/>)
19. Childhood Obesity - Local Health (<http://www.localhealth.org.uk/>)
20. GCSE achievement - Local Health (<http://www.localhealth.org.uk/>)

Live Well

21. Adult obesity - Modelled estimates from Public Health Outcomes Framework PHE
22. Healthy Eating - Modelled estimates from Public Health Outcomes Framework PHE
23. Coronavirus Infections - UKSHA 2021
24. Adult smoking - Modelled estimates from Annual Population Survey 2019

Work Well

25. Employment rate - GLA London Datastore (<https://data.london.gov.uk/dataset/ward-profiles-and-atlas>)
26. Out of work benefits - GLA London Datastore (<https://data.london.gov.uk/dataset/ward-profiles-and-atlas>)
27. Household income - GLA London Datastore (<https://data.london.gov.uk/dataset/ward-profiles-and-atlas>)
28. House Price - GLA London Datastore (<https://data.london.gov.uk/dataset/ward-profiles-and-atlas>)

Age Well

29. Deaths under 75 - Local Health (<http://www.localhealth.org.uk/>)
30. Long term health problem - Nomis (<https://www.nomisweb.co.uk/>)
31. Independent Living - Local Health (<http://www.localhealth.org.uk/>)
32. Elder deprivation - Local Health (<http://www.localhealth.org.uk/>)
33. Main cause of death - Local Health (<http://www.localhealth.org.uk/>)