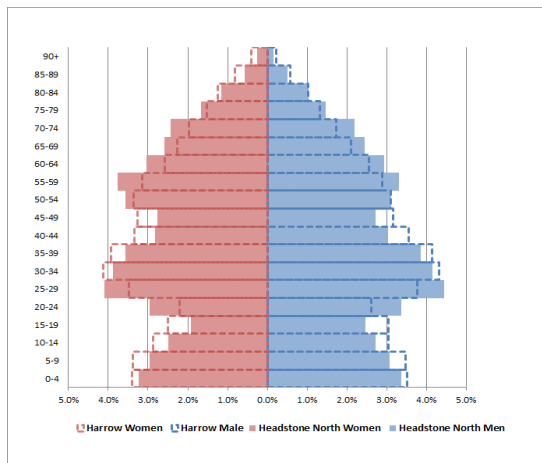
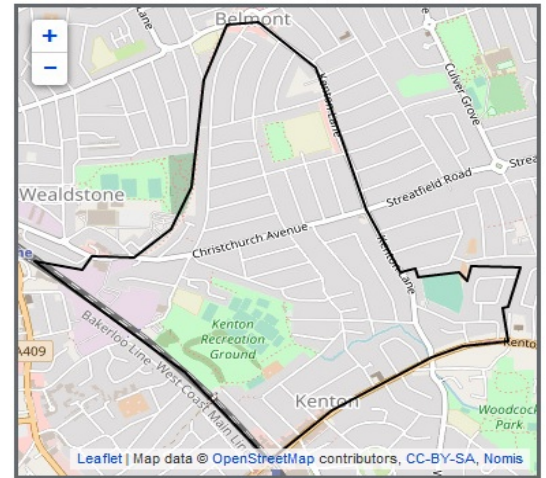


Kenton West

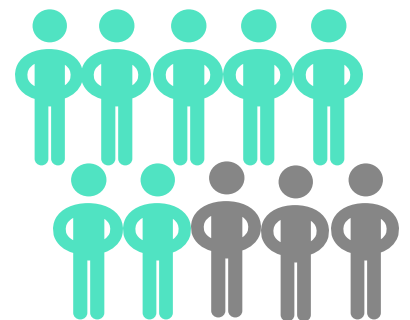


Population



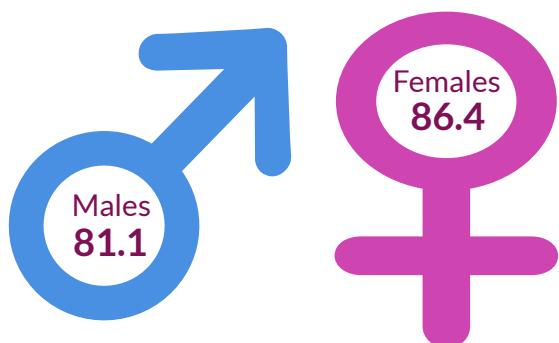
11,155
residents in 2019

Ethnic background



7 in 10
residents are from any other ethnic group other than White (2011)

Life expectancy at birth



Open Space



17.9%
Percentage of the area that is open space (2014)

Crime Rate

47.4
per 1,000
Crime rate 2020/21

Harrow 59.6 per 1,000



The male life expectancy at birth in Kenton West is 81.1 years, which is slightly lower than the Harrow average of 82.9 years (2015-2019).

The female life expectancy at birth in Kenton West is 86.4 years, which is similar to the Harrow average of 86.0 years (2015-2019).

Births



75.3

General Fertility rate
(2015-19)

Live births per 1,000 women
Harrow 3.7 per 1,000

START WELL

Low birth weight

9%



Percentage of full term babies
weighing less than 2.5 kilos
(2015 -2019)

Harrow 8%

Child Poverty

7.5%



Percentage of children under
the age of 16 living in low
income households
(2019)

Harrow 12.3%

School Readiness

77.2%

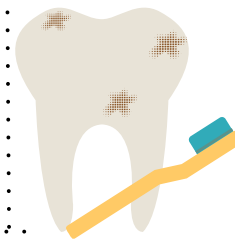
The percentage of children
achieving a good level of
development at age 5

Harrow 73.8%



Tooth decay

66



Number of 5 year
olds free from
tooth decay

CYP admission for injury

7.0



Emergency admissions for under 5s
admitted to hospital for injuries
(2015-16-19/20)

per 10,000 0-4 population
Harrow 7.4 per 10,000

Childhood Obesity

22.0%



Obese children (10-11 years)

Harrow 20.5%

GCSE Achievement



52.3%

GCSEs achieved (5 A*-C
including English & Maths)
2019/20

Harrow 50.9%

Obesity

5,356

Estimated number of adults
16+ overweight or obese
(2019/20)



LIVE WELL

5,725

Estimated number of adults
16+ eating 5 or more fruit and
veg a day
(2019/20)

Coronavirus infections



1,605

Rate per 10,000 population
(2021)

Harrow 1,552 per 10,000
population

Healthy Eating



Smoking

960



Estimated number of
adult smokers
(2019/20)

Unemployment rate

1.5%

Percentage working age receiving out of work benefits 2019/20



Harrow 2%

WORK WELL

Long term unemployment

1.8

Long terms umemployment rate per 1,000 working age 2019/20

Harrow 1.8 per 1,000



Household income

Median House price

£38k

Median household income estimate (2012/13)

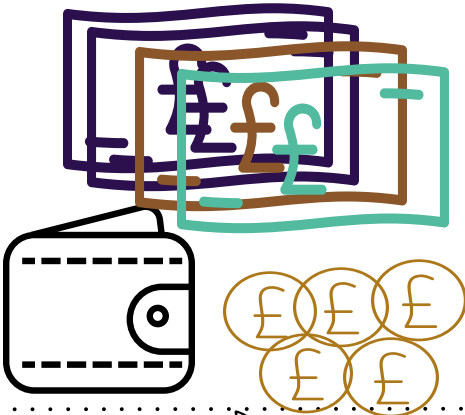
Harrow 38k



£520k

Median house price(2019/20)

Harrow £454k



Premature death

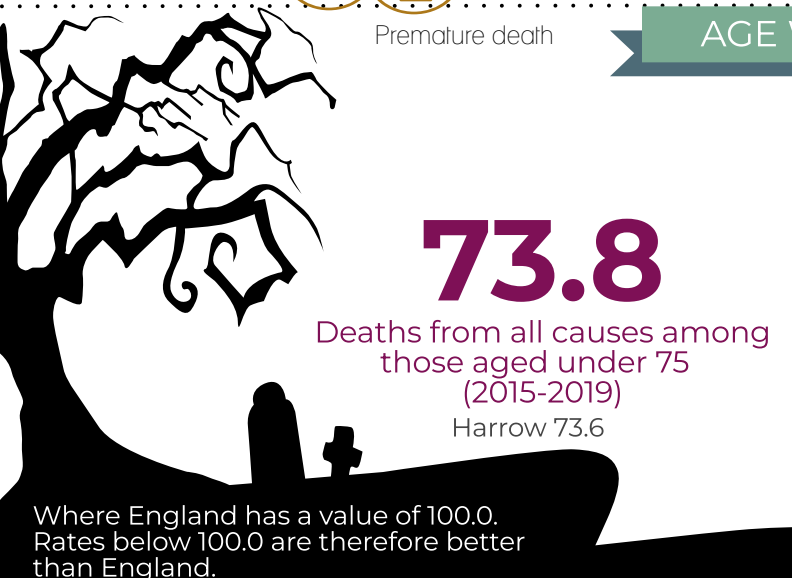
AGE WELL

Long-term health problem or disability:
Day-to-day activities

73.8

Deaths from all causes among those aged under 75 (2015-2019)

Harrow 73.6



Where England has a value of 100.0. Rates below 100.0 are therefore better than England.



7%
LIMITED A LOT

7%
LIMITED A LITTLE

86%
NOT LIMITED

86% of resident reported that their daily activities were not limited by a long-term health problem or disability. This is similar to London (86%), but higher than Harrow (85%) and England (82%).

Independent living

Older people in deprivation

15.5%

People aged 65+ who live alone (2011)

Harrow 26.7%



17.8%

Percentage of older people living in deprivation 2019

Harrow 17.3%



Number of premature deaths by main causes in Harrow



89.8

Deaths due to cancer



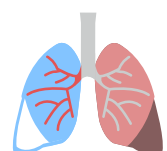
104.1

Deaths due to cardiovascular disease (incl. heart disease)



87.6

Deaths due to stroke



56.7

Deaths due to respiratory diseases

Where England has a value of 100.0. Rates below 100.0 are therefore better than England.

DATA SOURCES

Population

1. Square kilometres - GLA London Datastore (<https://data.london.gov.uk/dataset/ward-profiles-and-atlas>)
2. GP practices - Harrow CCG
3. Pharmacies - Harrow CCG
4. Dentists - NHS England
5. Children's Centres - Harrow Council
6. Schools - Harrow Council
7. Population Pyramid - Office for National Statistics (ONS) 2019
8. Population - GLA London Datastore (<https://data.london.gov.uk/dataset/ward-profiles-and-atlas>)
9. BAME - GLA London Datastore (<https://data.london.gov.uk/dataset/ward-profiles-and-atlas>)
10. Life expectancy - Local Health (<http://www.localhealth.org.uk/>)
11. Open space - GLA London Datastore (<https://data.london.gov.uk/dataset/ward-profiles-and-atlas>)
12. Crime rate - GLA London Datastore (<https://data.london.gov.uk/dataset/ward-profiles-and-atlas>)

Start Well

13. Births - Modelled estimates from ONS 2015
14. Low birth weight - Local Health (<http://www.localhealth.org.uk/>)
15. Child poverty - Local Health (<http://www.localhealth.org.uk/>)
16. School readiness - Harrow Council
17. Tooth decay - Modelled estimate from Dental Public Health Epidemiology Programme for England
18. Hospital admissions - Local Health (<http://www.localhealth.org.uk/>)
19. Childhood Obesity - Local Health (<http://www.localhealth.org.uk/>)
20. GCSE achievement - Harrow Council

Live Well

21. Adult obesity - Modelled estimate Public Health Outcomes Framework PHOF
22. Healthy eating - Modelled estimate Public Health Outcomes Framework PHOF
23. Coronavirus Infections - UKSHA 2021
24. Adult smoking - Modelled estimates from Annual Population Survey 2019

Work Well

25. Employment rate - GLA London Datastore (<https://data.london.gov.uk/dataset/ward-profiles-and-atlas>)
26. Out of work benefits - GLA London Datastore (<https://data.london.gov.uk/dataset/ward-profiles-and-atlas>)
27. Household income - GLA London Datastore (<https://data.london.gov.uk/dataset/ward-profiles-and-atlas>)
28. House Price - GLA London Datastore (<https://data.london.gov.uk/dataset/ward-profiles-and-atlas>)

Age Well

29. Deaths under 75 - Local Health (<http://www.localhealth.org.uk/>)
30. Long term health problem - Nomis (<https://www.nomisweb.co.uk/>)
31. Independent Living - Local Health (<http://www.localhealth.org.uk/>)
32. Elder deprivation - Local Health (<http://www.localhealth.org.uk/>)
33. Main cause of death - Local Health (<http://www.localhealth.org.uk/>)