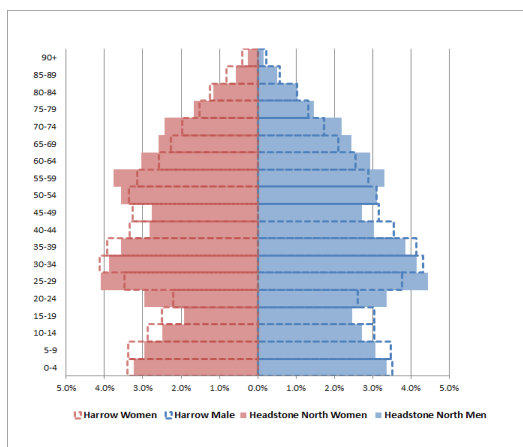
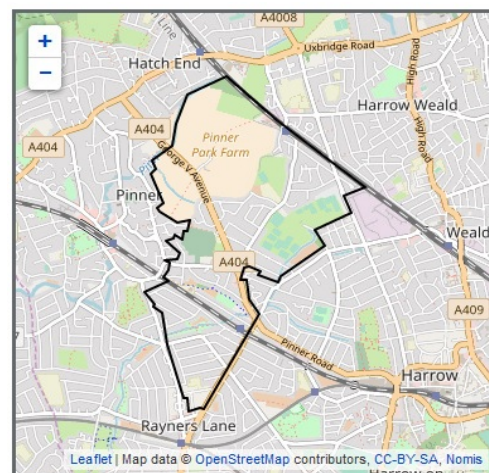
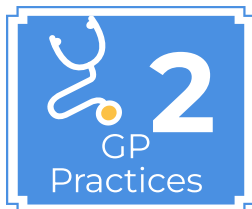


Headstone North



Population



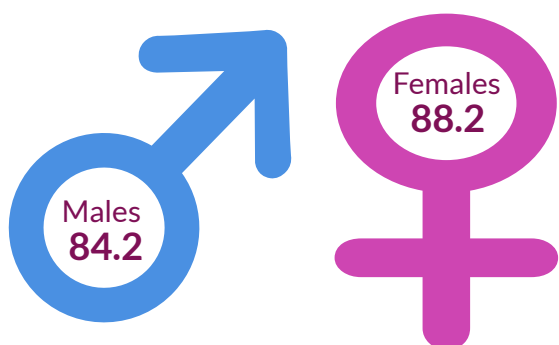
10,361
residents in 2019

Ethnic background

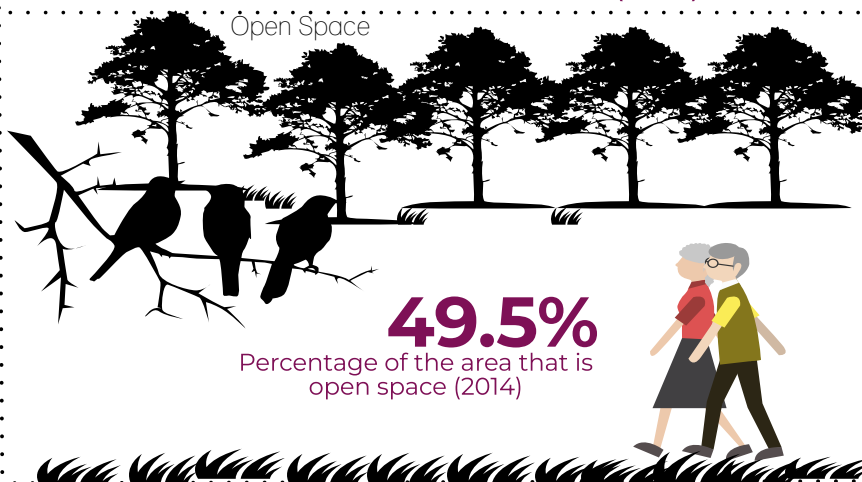


residents from any
other ethnic group
other than White
(2011)

Life expectancy at birth



Open Space



Crime Rate

43.5
Crime rate per 1,000
2020/21

Harrow (50.3 per 1000)



The male life expectancy at birth in Headstone North is 84.2 years, which is similar to the Harrow average of 82.9 years (2015-2019).

The female life expectancy at birth in Headstone North is 88.2 years, which is higher than the Harrow average of 86.0 years (2015-2019).

Births



62.0

General Fertility rates
(2015-19)

Live births per 1,000 women
Harrow (73.7 per 1,000)

START WELL

Low birth weight

11%



Percentage of full term babies
weighing less than 2.5 kg
(2015 -2019)
Harrow 8%

Child Poverty

6.8%



Percentage of children
under the age of 16 living in
low income households
(2019)
Harrow 12.3%

School Readiness

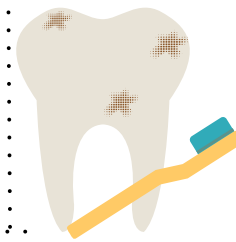
78.7%



The percentage of children
achieving a good level of
development at age 5

Harrow 73.8%

Tooth decay

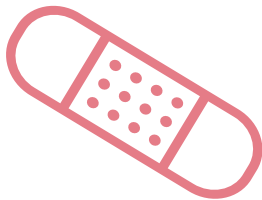


60

Number of 5 year
olds free from
tooth decay

CYP admission for injury

4.6



Emergency admissions for under 5s
admitted to hospital per 10,000 0-4
population
(2015/16-19/20)

Harrow 7.4 per 10,000

Childhood Obesity

16.1%



Obese children (10-11 years)
Harrow 20.5%

GCSE Achievement



55.5%

GCSEs achieved (5 A*-C
including English & Maths)
2018/19

Harrow 50.9%

Obesity

5,251

Estimated number of
adults overweight of
obese
(2019/20)



LIVE WELL

5,613

Percentage of adults 16+
eating 5 or more fruit and
veg a day (2019/20)



Healthy Eating

Coronavirus infections



1,674

Rate per 10,000
population
(2021)

Harrow 1,552 per
population

Smoking

942

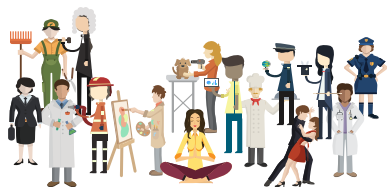


Estimated number of
smokers
(2019)

Unemployment

1.2%

Unemployed 2019/20



Harrow 2.0%

WORK WELL

Long term unemployment

2.1

Rate of unemployment (working age per 1,000)
2019/20

Harrow 1.8 per 1,000

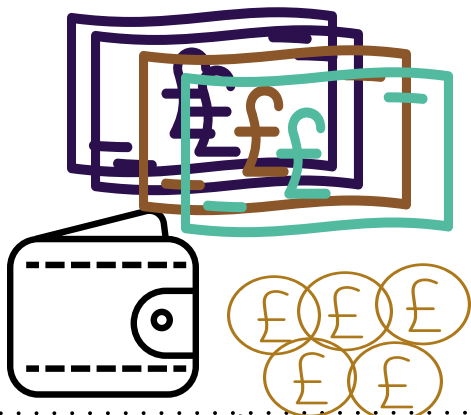


Household income

Median House price

£44k

Median household
income estimate
(2012/13)



£615k
(2021)

Harrow £454k

AGE WELL

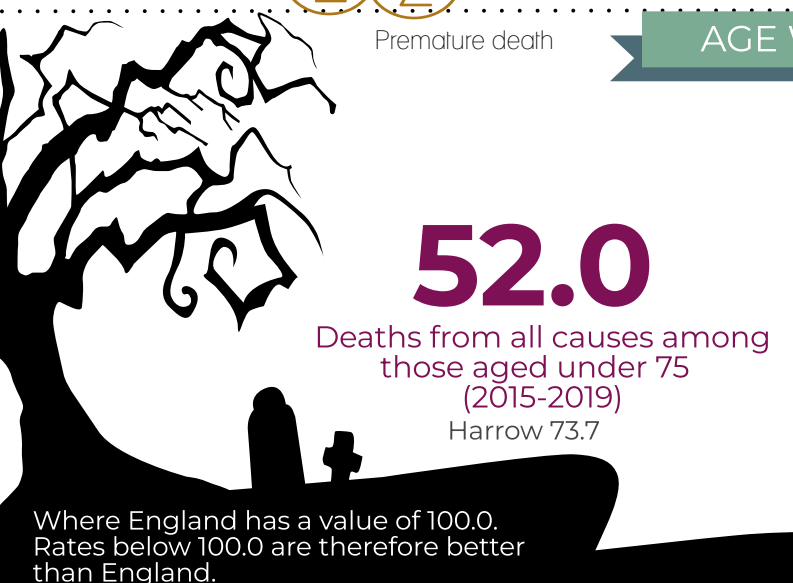
Premature death

Long-term health problem or disability:
Day-to-day activities

52.0

Deaths from all causes among
those aged under 75
(2015-2019)

Harrow 73.7



Where England has a value of 100.0.
Rates below 100.0 are therefore better
than England.



86% of resident reported that their daily activities were not limited by a long-term health problem or disability. This is higher than Harrow (85%) and England (82%) but similar to Harrow (86%).

Independent living

Older people in deprivation

23.5%

People aged 65+
who live alone
(2011)

Harrow 26.7%



11.3%

Proportion of
older people living
in deprivation
(2019)

Harrow 17.3%



Deaths by main causes in Harrow



68

Deaths due to cancer



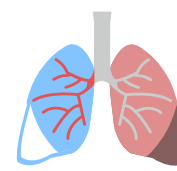
77

Due to coronary heart
disease



76

Due to stroke



69

Due to respiratory
diseases

Where England has a value of 100.0. Rates below 100.0 are therefore better than England.

DATA SOURCES

Population

1. Square kilometres - GLA London Datastore (<https://data.london.gov.uk/dataset/ward-profiles-and-atlas>)
2. GP practices - Harrow CCG
3. Pharmacies - Harrow CCG
4. Dentists - NHS England
5. Children's Centres - Harrow Council
6. Schools - Harrow Council
7. Population Pyramid - Office for National Statistics (ONS) 2019
8. Population - GLA London Datastore (<https://data.london.gov.uk/dataset/ward-profiles-and-atlas>)
9. BAME - GLA London Datastore (<https://data.london.gov.uk/dataset/ward-profiles-and-atlas>)
10. Life expectancy - Local Health (<http://www.localhealth.org.uk/>)
11. Open space - GLA London Datastore (<https://data.london.gov.uk/dataset/ward-profiles-and-atlas>)
12. Crime rate - GLA London Datastore (<https://data.london.gov.uk/dataset/ward-profiles-and-atlas>)

Start Well

13. General Fertility Rate - Local Health (<http://www.localhealth.org.uk/>)
14. Low birth weight - Local Health (<http://www.localhealth.org.uk/>)
15. Child poverty - Local Health (<http://www.localhealth.org.uk/>)
16. School readiness - Harrow Council
17. Tooth decay - Modelled estimate from Dental Public Health Epidemiology Programme for England
18. Hospital admissions - Modelled estimates from Hospital Episode Statistics
19. Childhood Obesity - Local Health (<http://www.localhealth.org.uk/>)
20. GCSE achievement - Harrow Council

Live Well

21. Adult obesity - Modelled estimates from PHOF
22. Healthy eating - Modelled estimates from PHOF
23. Coronavirus Infections - UKSHA 2021
24. Adult smoking - Modelled estimates from Annual Population Survey 2019

Work Well

25. Unemployment rate - GLA London Datastore (<https://data.london.gov.uk/dataset/ward-profiles-and-atlas>)
26. Long term unemployment - GLA London Datastore (<https://data.london.gov.uk/dataset/ward-profiles-and-atlas>)
27. Household income - GLA London Datastore (<https://data.london.gov.uk/dataset/ward-profiles-and-atlas>)
28. House Price - GLA London Datastore (<https://data.london.gov.uk/dataset/ward-profiles-and-atlas>)

Age Well

29. Deaths under 75 - Local Health (<http://www.localhealth.org.uk/>)
30. Long term health problem - Nomis (<https://www.nomisweb.co.uk/>)
31. Independent Living - Local Health (<http://www.localhealth.org.uk/>)
32. Elder deprivation - Local Health (<http://www.localhealth.org.uk/>)
33. Main cause of death - Local Health (<http://www.localhealth.org.uk/>)