

All dimensions to be checked on site and any discrepancies to be reported immediately to Iceland Foods plc.

REV	DATE	BY	DESCRIPTION
A	02.08.16	KEN	FIRST FLOOR ADDED TO DRAWING. BACK-UP CHILLER MODS. MINOR MODS
B	01.12.16	KEN	REDRAWN FOR 2017 REFIT
C	23.02.17	KEN	REDRAWN AFTER SURVEY
D	06.03.17	KEN	MINOR RETAIL MODS CUSTOMER ENTRANCE MODS
E	16.03.17	KEN	MINOR RETAIL MODS
F	27.03.17	KEN	CRAFT BEER CHANGED TO 1M
G	03.04.17	KEN	MINOR MODS
H	29.06.17	KEN	MINOR MODS NEW MEETING ROOM ADDED

AREAS	EXISTING	PROPOSED
TOTAL GROSS	18733 SQ.FT.	NETT SALES 7176 SQ.FT.
BASEMENT		GROUND 11556 SQ.FT.
FIRST	7176 SQ.FT.	SECOND

FROZEN RANGE CABINET EQUIVALENT	EXISTING	PROPOSED
601		86
910	61(79)	
COMBI		
REMOTE FULL HEIGHT DOORS		
REMOTE 1/2 GLASS DOORS		
PARIS		
OPEN ENDS STANDARD	3	3
OPEN ENDS SLIM		
SYMPHONY 1380		
SYMPHONY 1000		
TOTAL FROZEN RANGE	82	89

CHILLED (LINEAR METRES)	EXISTING	PROPOSED
REMOTE CHILLED		
REMOTE LOW LEVEL		
2.5 CHILLER	8.5	6
1.9 CHILLER		3
REMOTE MILK CHILLER		1
3.5 MILK CHILLER	1	
2.5 MILK CHILLER		
OPERA FULL HEIGHT		
TOTAL CHILLED	9.5	10

FRUIT AND VEG (LINEAR METRES)	EXISTING	PROPOSED
2.5 F&V CHILLER	1.5	2
1.9 F&V CHILLER		
FRAMBIENT UNIT		
F&V REMOTE CHILLER		
F&V TABLE		
F&V STACKERS	2.6M	6.25M
TOTAL F&V	6.35M	11.25M

GROCERY (LINEAR METRES)	EXISTING	PROPOSED
GROCERY 2000	14M	
GROCERY 1800		38M
GROCERY 1600	45M	43.2M
GROCERY 1400		
SPINE (TRIPLE)	7.6EQ.	
SPINE (DOUBLE)	21.2EQ.	29.2EQ.
SPINE (SINGLE)		
TOTAL GROCERY	87.8	110.4

MISCELLANEOUS	EXISTING	PROPOSED
CDR UNIT		
MARS SWEET UNIT		
2000 F2G Chiller		
WINE TOWER - LARGE		
WINE TOWER - SMALL		
WINE CHILLER		1
NEWSPAPER BAY FULL HEIGHT (5264)		
NEWSPAPER BAY FULL HEIGHT (5264) F2G Stands		
NEWSPAPER QUAD (4189)		
NEWSPAPER DOUBLE TOWER (5181)		
MAGAZINE BAY FULL HEIGHT (5266)		
MAGAZINE BAY FULL HEIGHT (5266) 'Craft' Beer		1
FLOWER DISPLAY		
FLOWER DISPLAY COFFEE		

CHECKOUTS	EXISTING	PROPOSED
FLAT BED	B1(4)	3.2M(4)
EXPRESS		
MICRO-STATIC		
MICRO-BELTED		
OTHER		

APPLIANCES (SQ FT)	EXISTING	PROPOSED
COLDROOM (CU FT)	5700	5700

DWG NO.	SHEET NO.	REV.
1500	18	H

PROJECT	STORE NO.
HARROW	557

ADDRESS
**368 STATION ROAD
 HARROW**

TITLE
PROPOSED LAYOUT

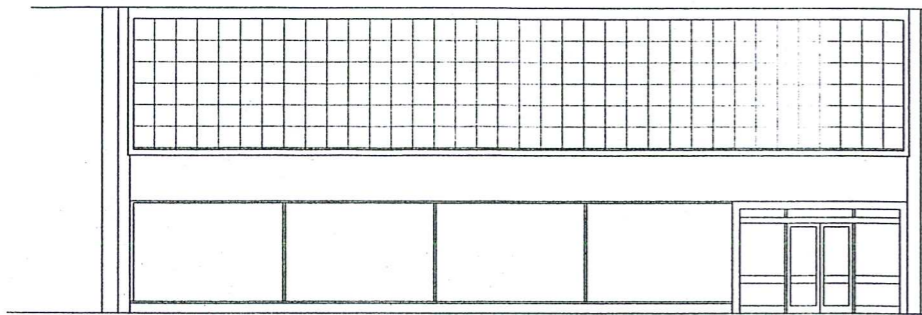
DATE	SCALE
29/06/2017	1:100

DRAWN	CHECKED
KEN	

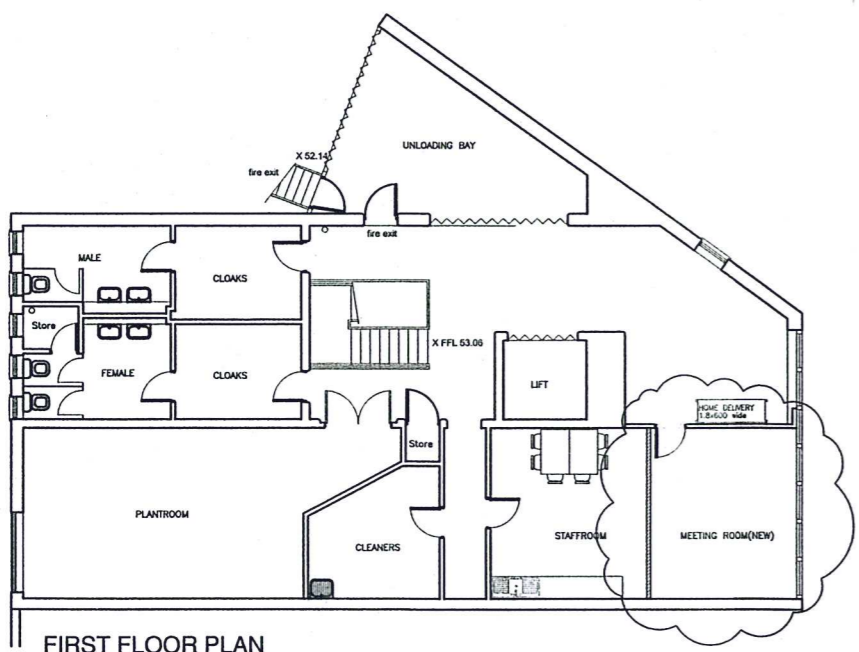
Key

- Fire Extinguisher
- Fire Blanket
- Emergency light box with green moving person sign
- Fire alarm call point
- Fire alarm control panel
- Fire alarm sounder
- Smoke detector
- Licensable Activity (Sale of Alcohol)
- Fire exit - keep clear sign
- Supporting Pillar

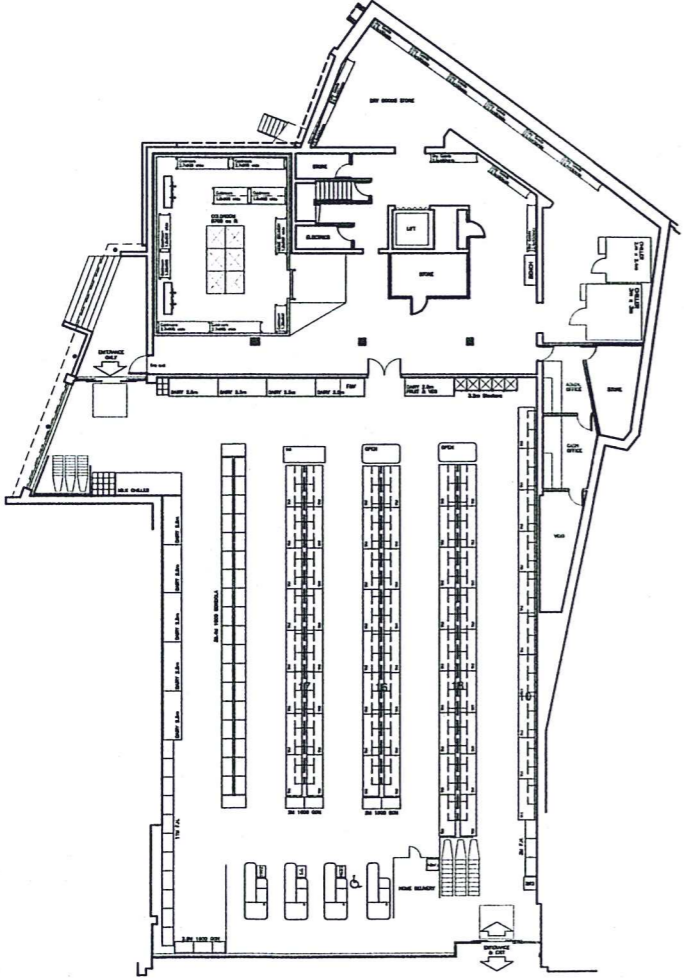
NB - Children and young persons are permitted to access all public areas of the premises



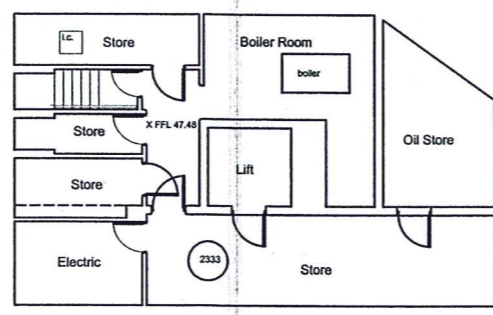
EXISTING FRONT ELEVATION



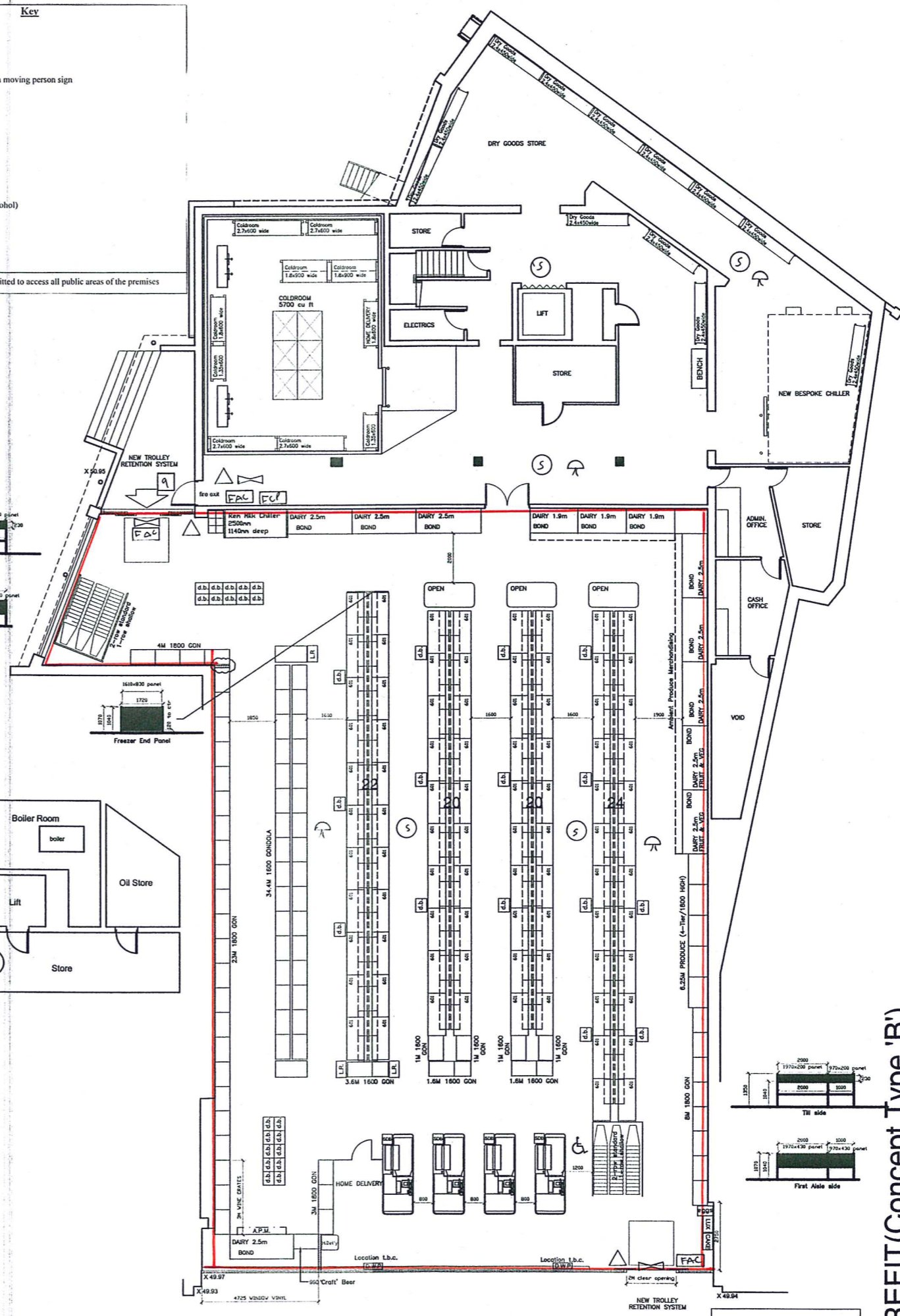
FIRST FLOOR PLAN



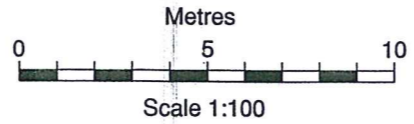
EXISTING GROUND FLOOR (Scale 1:200)



BASEMENT



PROPOSED GROUND FLOOR



REFIT LAYOUT
 APPROVED
 THIS DRAWING MUST
 NOT BE ALTERED

2017 REFIT (Concept Type 'B')