

Key	Description
①	area to be covered by non-maintained emergency luminaires (BS 5266)
②	area covered by maintained luminaire (BS 5266)
③	maintained call point (BS 5839)
④	Fire Alarm Control Panel (FACP) or fire alarm indicator panel (FAIP)
VP	visual alarm panel
PB	Photo beam or light curtain (depending on the detection method) which can be used in conjunction with a fire alarm control panel (BS 5839)
PC	Pressure Compensated Carbon Dioxide (PC-CO2) fire alarm panel
FR30S	30 min fire resistant doorset with intumescent strip, self-closing, opening force limited to 200N maximum at 90 degrees
FR30	30 min fire resistant doorset with intumescent strip, self-closing, opening force limited to 200N maximum
FR15	15 min fire resistant doorset with intumescent strip, self-closing, opening force limited to 200N maximum
FR30E	30 min fire resistant doorset with intumescent strip, self-closing, opening force limited to 200N maximum, equipped with emergency release
FR15E	15 min fire resistant doorset with intumescent strip, self-closing, opening force limited to 200N maximum, equipped with emergency release
FR30I	30 min fire resistant doorset with intumescent strip, self-closing, opening force limited to 200N maximum, equipped with intumescent strip
FR15I	15 min fire resistant doorset with intumescent strip, self-closing, opening force limited to 200N maximum, equipped with intumescent strip
FR30W	30 min fire resistant doorset with intumescent strip, self-closing, opening force limited to 200N maximum, equipped with water protection
FR15W	15 min fire resistant doorset with intumescent strip, self-closing, opening force limited to 200N maximum, equipped with water protection
FR30E15W	30 min fire resistant doorset with intumescent strip, self-closing, opening force limited to 200N maximum, equipped with emergency release and water protection
FR15E15W	15 min fire resistant doorset with intumescent strip, self-closing, opening force limited to 200N maximum, equipped with emergency release and water protection
SS22	Door to be secured, fitted open when members of the fire service are in premises
SM1	Sign (Fire Door Keep Locked) to BS 5499



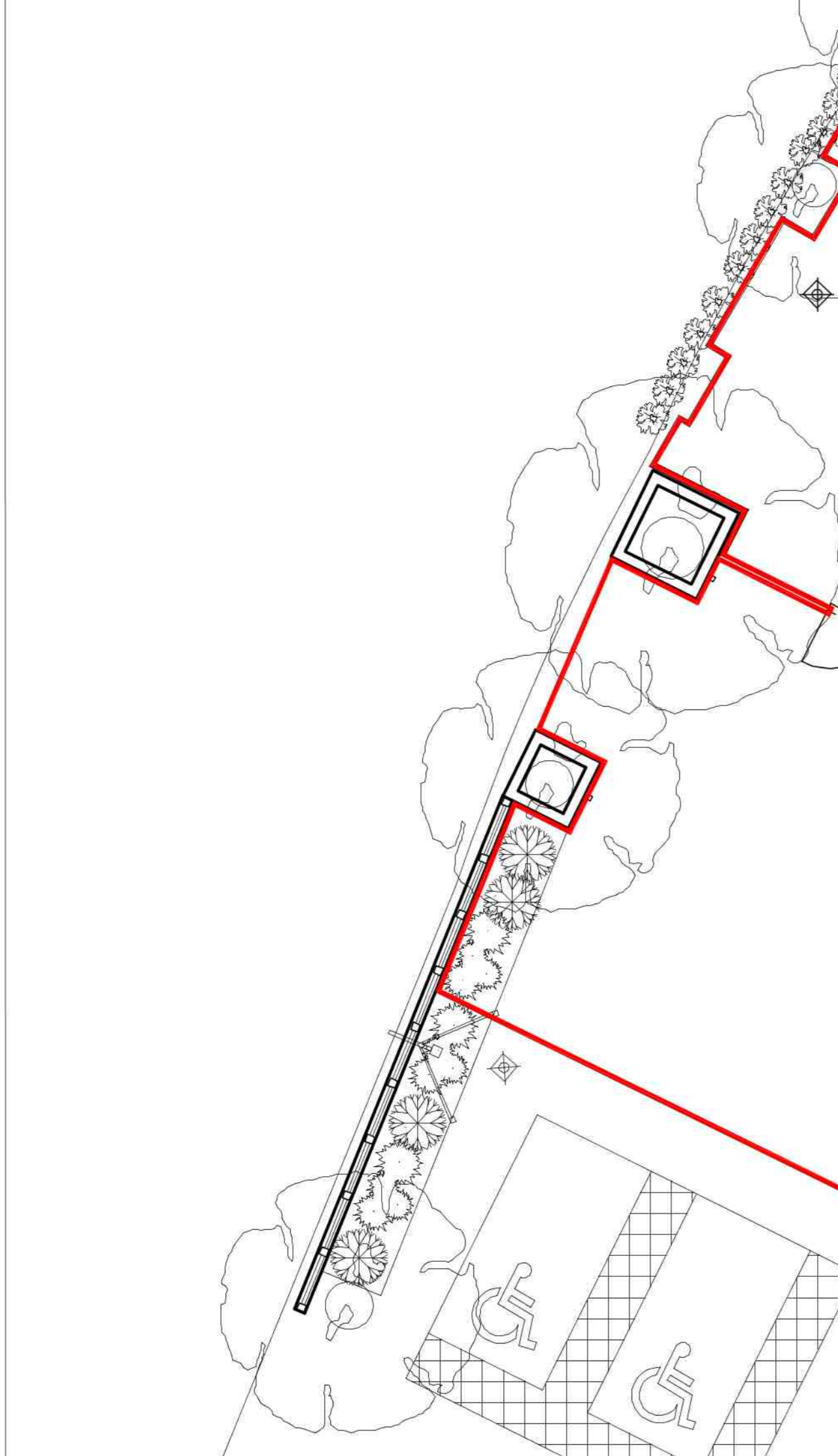
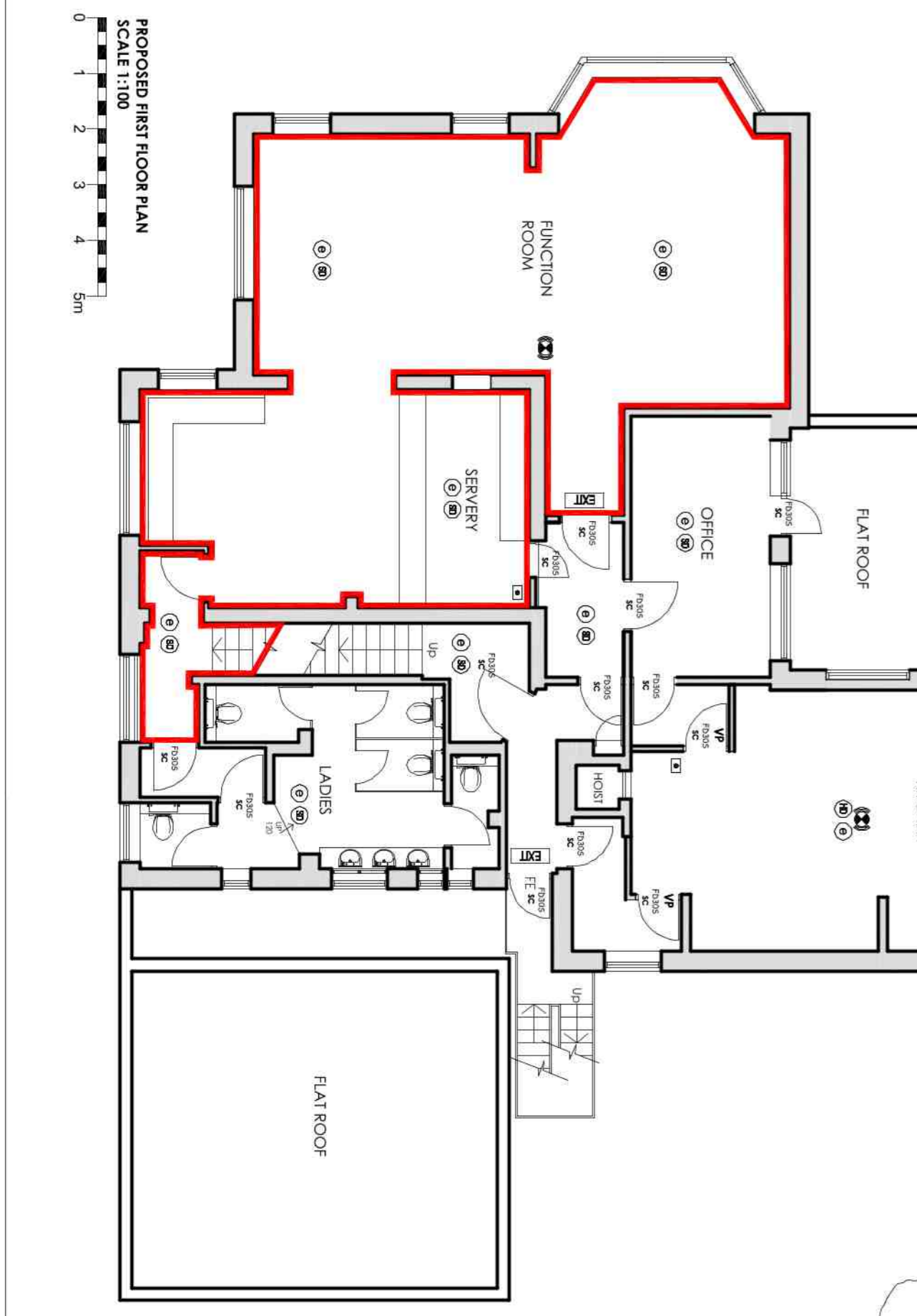
BLOCK PLAN
SCALE 1:1500



LOCATION PLAN
SCALE 1:1250

GENERAL NOTE
Items shown on this plan which are not required by the Plans Regulations are for illustrative purposes only, and do not form part of the licence. These items may be moved at the discretion of the licence holder. The current location of the fire safety equipment and other safety equipment is as shown. These items may be moved from time to time with agreement of the Fire Officer or after fire risk assessment.

- 1. ALL FIRE RESISTING DOORS AND PARTITIONS TO BE IN ACCORDANCE WITH BS 476 PART 8.
- 2. ALL FIRE RESISTING DOORS TO BE IN ACCORDANCE WITH BS 476 PART 8.
- 3. FIRE ALARM SYSTEM TO COMPLY WITH BS 5839.
- 4. FIRE ALARM SYSTEM TO COMPLY WITH BS 5839.
- 5. PHOTO LUMINESCENT SIGN TO COMPLY WITH BS 5839 PART 2.
- 6. PHOTO LUMINESCENT SIGN TO COMPLY WITH BS 5839 PART 2.
- 7. PHOTO LUMINESCENT SIGN TO COMPLY WITH BS 5839 PART 2.
- 8. PHOTO LUMINESCENT SIGN TO COMPLY WITH BS 5839 PART 2.
- 9. PHOTO LUMINESCENT SIGN TO COMPLY WITH BS 5839 PART 2.
- 10. PHOTO LUMINESCENT SIGN TO COMPLY WITH BS 5839 PART 2.
- 11. PHOTO LUMINESCENT SIGN TO COMPLY WITH BS 5839 PART 2.
- 12. PHOTO LUMINESCENT SIGN TO COMPLY WITH BS 5839 PART 2.
- 13. PHOTO LUMINESCENT SIGN TO COMPLY WITH BS 5839 PART 2.
- 14. PHOTO LUMINESCENT SIGN TO COMPLY WITH BS 5839 PART 2.
- 15. PHOTO LUMINESCENT SIGN TO COMPLY WITH BS 5839 PART 2.
- 16. PHOTO LUMINESCENT SIGN TO COMPLY WITH BS 5839 PART 2.
- 17. PHOTO LUMINESCENT SIGN TO COMPLY WITH BS 5839 PART 2.
- 18. PHOTO LUMINESCENT SIGN TO COMPLY WITH BS 5839 PART 2.
- 19. PHOTO LUMINESCENT SIGN TO COMPLY WITH BS 5839 PART 2.
- 20. PHOTO LUMINESCENT SIGN TO COMPLY WITH BS 5839 PART 2.
- 21. PHOTO LUMINESCENT SIGN TO COMPLY WITH BS 5839 PART 2.



The drawing is the property of Hunter Patel Creative Group. Copyright reserved. No part of this drawing should be reproduced or transmitted in any form or by any means, without the consent in writing of Hunter Patel Creative Group. Figured dimensions to take preference over those stated. All dimensions to be checked on site before use in conjunction with the specifications when existing.

EXISTING	PROPOSED
EDA GF (sqm)	133 sqm
	133 sqm

Note : EDA excludes lifts, lobbies & bar servery

Studio 10 First Floor Offices
12 Market Street Lichfield Staffordshire WS13 4HH
Tel: 01543 258600
www.hunterpatelcreativegroup.com

MITCHELLS & BUTLERS
27 Fleet Street Birmingham B3 1JF
Tel: 0121 498 4000 www.mbplic.com

REVISION

REV	DESCRIPTION
C	X
B	X
A	X

Client: Mitchell's & Butlers
Job: The Junction
Address: 9 Gayton Road, Harrow, London, HA1 2DH
Title: Licensing Drawing

Drawn	DM	Scale	1:100 @ A0
Date	Oct 18		
Job No	2075	Dwg No	50