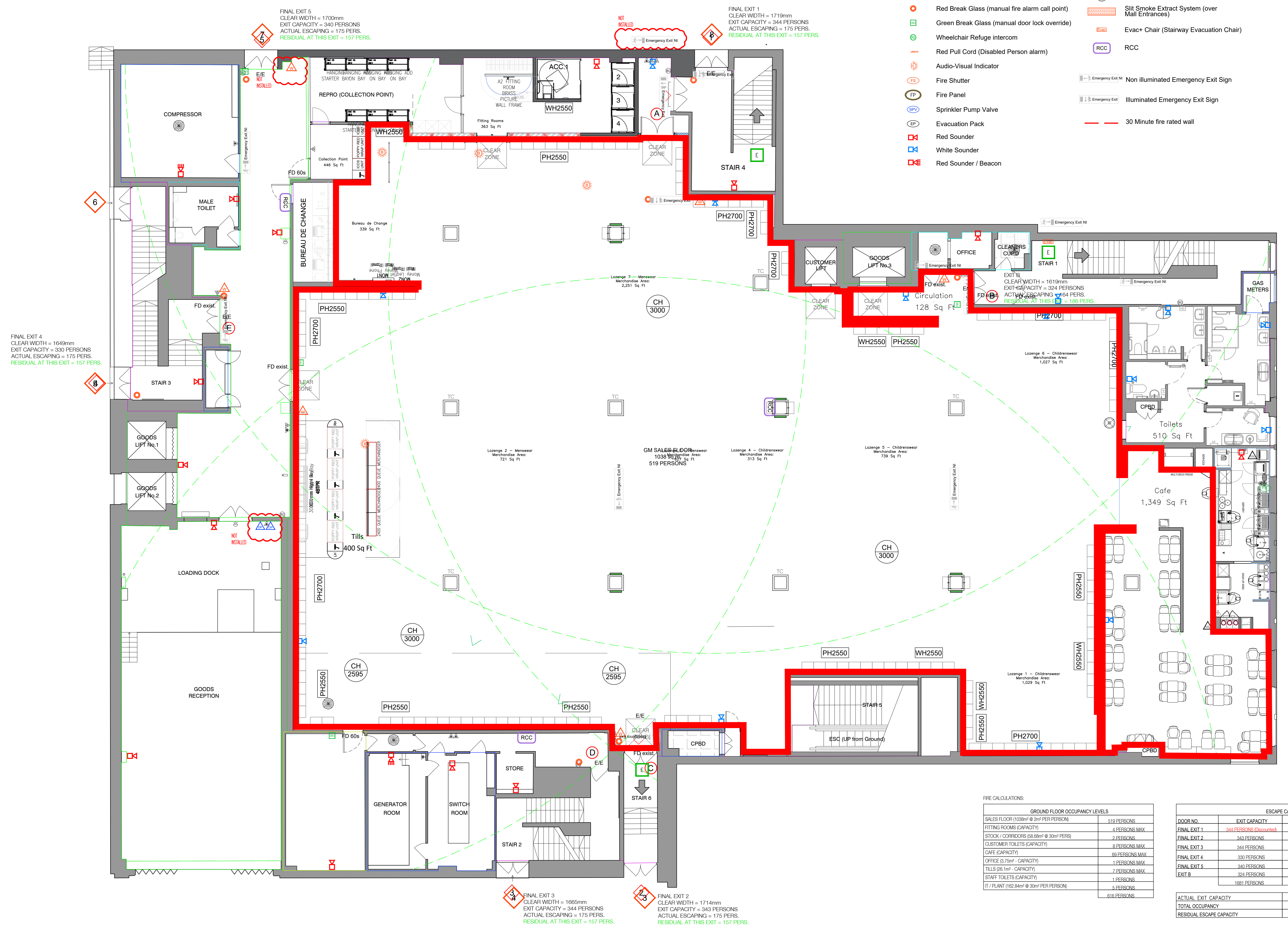


DO NOT SCALE FROM THIS DRAWING.
ALL DIMENSIONS TO BE CHECKED ON SITE.
COPYRIGHT PROTECTED.

LICENSING NOTES

LICENSING LEGEND:
Area for sale of alcohol for consumption off the Premises.
NOTE: All sales areas are to be licensed for the sale of alcohol for consumption off the Premises.

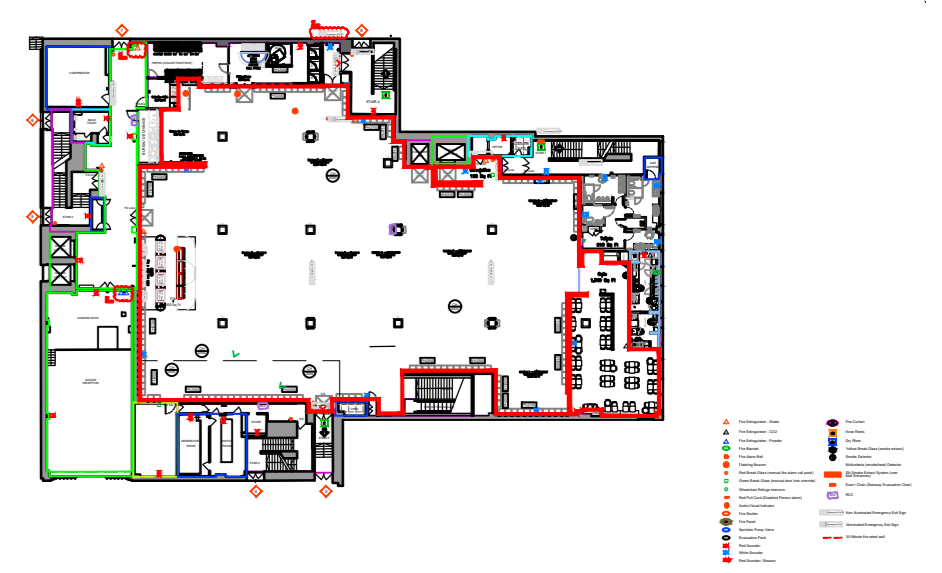
- Fire Extinguisher - Water
- Fire Extinguisher - CO2
- Fire Extinguisher - Powder
- Fire Blanket
- Fire Alarm Bell
- Flashing Beacon
- Red Break Glass (manual fire alarm call point)
- Green Break Glass (manual door lock override)
- Wheelchair Refuge Intercom
- Red Pull Cord (Disabled Person alarm)
- Audio-Visual Indicator
- Fire Shutter
- Fire Panel
- Sprinkler Pump Valve
- Evacuation Pack
- Red Sounder
- White Sounder
- Red Sounder / Beacon
- Fire Curtain
- Hose Reels
- Dry Riser
- Yellow Break Glass (smoke extract)
- Smoke Detector
- Multicriteria (smoke/heat) Detector
- Silt Smoke Extract System (over Mail Entrances)
- Evac+ Chair (Stairway Evacuation Chair)
- RCC
- Non illuminated Emergency Exit Sign
- Illuminated Emergency Exit Sign
- 30 Minute fire rated wall



FEASIBILITY

00 24.05.18 INTIAL ISSUE ADB ADC
RED STORE ASBESTOS STATEMENT
Asbestos Statement
This building is known or has the potential to contain ACM's. You must not proceed without first checking the asbestos register. You should ensure there are no ACM's in the planned area of work and that the survey has fully investigated this location. If no survey information is available or there is any element of doubt contact L&E Environmental on Tel: 0870 448 1345.
Recommendation: Prior to any Refurbishment Works
Review extent of existing survey - Carry out refurbishment survey to the scope

REV	DATE	DESCRIPTION	DRAWN	CHECKED



M&S
EST. 1884

STORE NAME
M&S HARROW
COUNTRY
ENGLAND
PROJECT
SPACE ADJUSTMENT (WAVE 2 - PHASE 3)
DRAWING
PROPOSED FIRST FLOOR LICENSING DRAWING

CONSULTANT
SKK DESIGN
DISCIPLINE DESCRIPTION
ARCHITECT
CONSULTANT LOGO
SKK Design
The Mill
Stortford Road
Hatfield Health Estate
CM22 7DL
Tel: 01279 873010
www.skkdesign.com

SCALE	PAPER SIZE	DATE	DRAWN	CHECKED
1:100	A1	24.05.18	ADB	ADC

STORE NUMBER	PROJECT No	DISCIPLINE CODE	DRAWING No
3118	HRR110	A	402

CONSULTANT PROJECT No	STATUS	REVISION
2203	F	00

FIRE CALCULATIONS:

GROUND FLOOR OCCUPANCY LEVELS	
SALES FLOOR (1038m ² @ 2m ² PER PERSON)	519 PERSONS
FITTING ROOMS (CAPACITY)	4 PERSONS MAX
STOCK / CORRIDORS (30.6m ² @ 30m ² PER PERSON)	2 PERSONS
CUSTOMER TOILETS (CAPACITY)	8 PERSONS MAX
CAFE (CAPACITY)	115 PERSONS MAX
OFFICE (0.75m ² - CAPACITY)	1 PERSONS MAX
TILLS (26.1m ² - CAPACITY)	7 PERSONS MAX
STAFF TOILETS (CAPACITY)	1 PERSONS
IT / PLANT (162.84m ² @ 30m ² PER PERSON)	5 PERSONS
	619 PERSONS

ESCAPE CAPACITIES		
DOOR NO.	EXIT CAPACITY	ACTUAL EXIT CAPACITY
FINAL EXIT 1	344 PERSONS (Discovered)	0 PERSONS
FINAL EXIT 2	2 PERSONS	141 PERSONS
FINAL EXIT 3	344 PERSONS	104 PERSONS
FINAL EXIT 4	330 PERSONS	115 PERSONS
FINAL EXIT 5	340 PERSONS	108 PERSONS
EXIT 6	324 PERSONS	148 PERSONS
	1081 PERSONS	616 PERSONS

ACTUAL EXIT CAPACITY	1081 PERSONS
TOTAL OCCUPANCY	616 PERSONS
RESIDUAL ESCAPE CAPACITY	1095 PERSONS