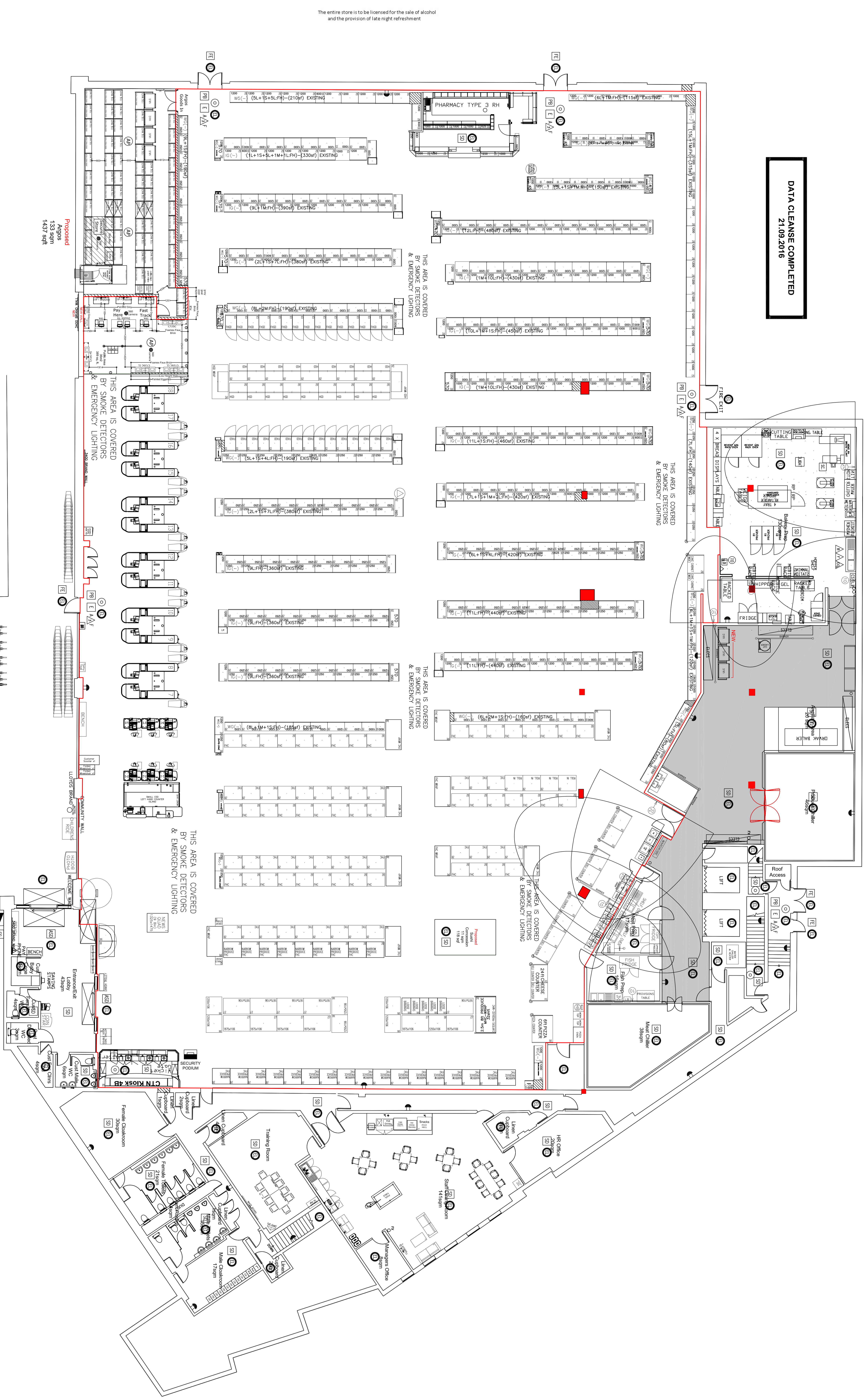


DATA CLEANSE COMPLETED
21.09.2016



The entire store is to be licensed for the sale of alcohol
and the provision of late night refreshment

Proposed
Ages
133 sqm
1437 sqft

Clearly Shop
Provision to Let
23sqm

REVISIONS

NO	DESCRIPTION
01	PUSH BAR
02	FIREMAN'S SWITCH
03	FIRE ALARM CALL POINT
04	FIRE EXTINGUISHER WATER
05	FIRE EXTINGUISHER FOAM
06	FIRE EXTINGUISHER DRY POWDER
07	FIRE EXTINGUISHER CARBON DIOXIDE
08	FIRE BLANKET
09	AUTOMATIC FIRE EXTINGUISHER
10	FIRE HOSE REEL
11	FIRE EXIT DOORS
12	DOORS WITH ELECTRO MAGNETIC LOCKS
13	EXIT SIGN (RUNNING MAN)
14	SMOKE DETECTOR BEING MOUNTED
15	HIDDEN FIRE DETECTOR
16	FIRE ALARM BELL
17	FIRE ALARM PANEL
18	AUTOMATIC SPRINKLER POINTS
19	EMERGENCY LIGHTING POINT
20	EMERGENCY LIGHTING (LUMINALED) EXIT BOX

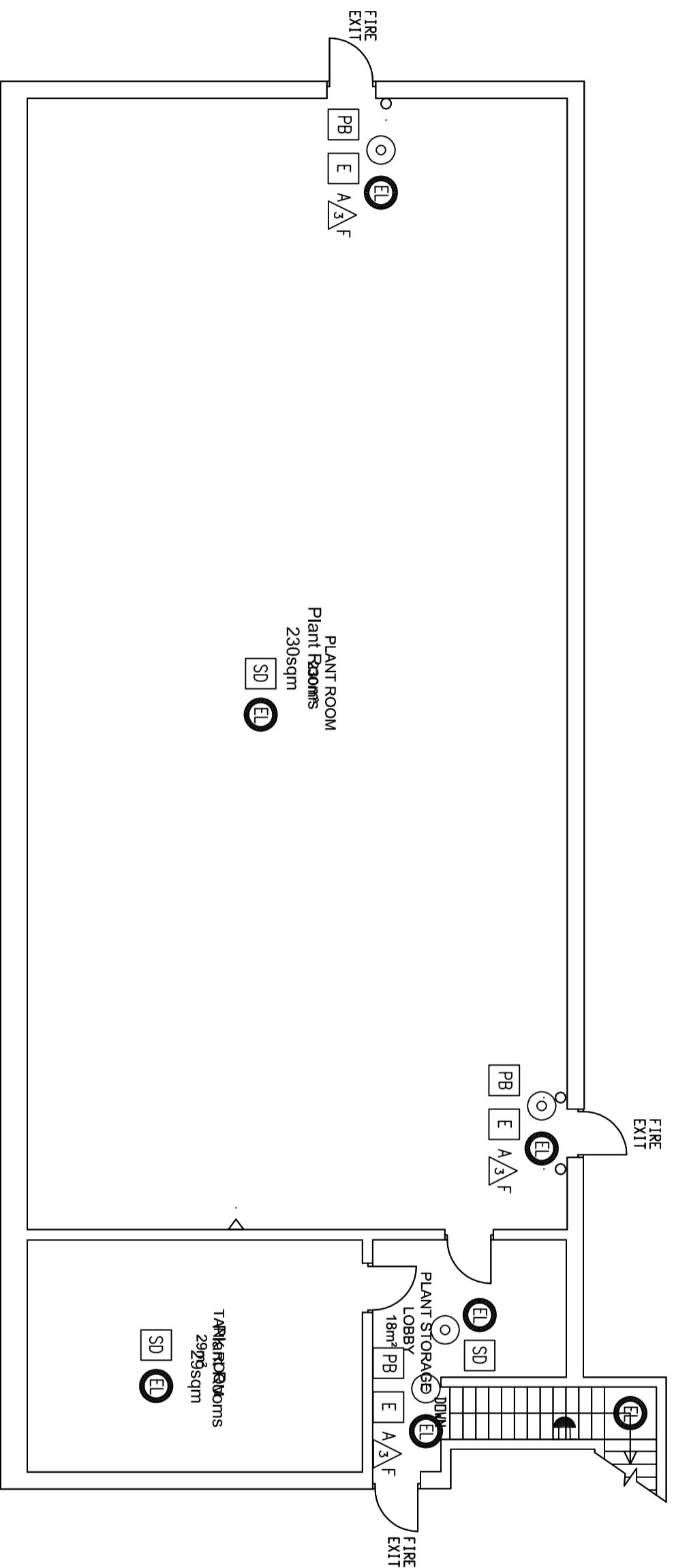
0504
PINNER

PROPOSED
GROUND FLOOR
STORE PLAN

DESIGNER: WATKINS SURGUY
DRAWING CREATOR: AD
SCALE: 1:100
DATE: 31.07.2018
DRAWING NUMBER: 0504.G01-1

Sainsbury's
STORE DEVELOPMENT GROUP, SAINSBURY'S SUPERMARKETS LTD
33-35 MOULDER STREET, LONDON, EC2N 2JF
TELEPHONE: 020 7599 9999 FAX: 020 7599 7910

The entire store is to be licensed for the sale of alcohol
and the provision of late night refreshment



REVISIONS

LEGEND

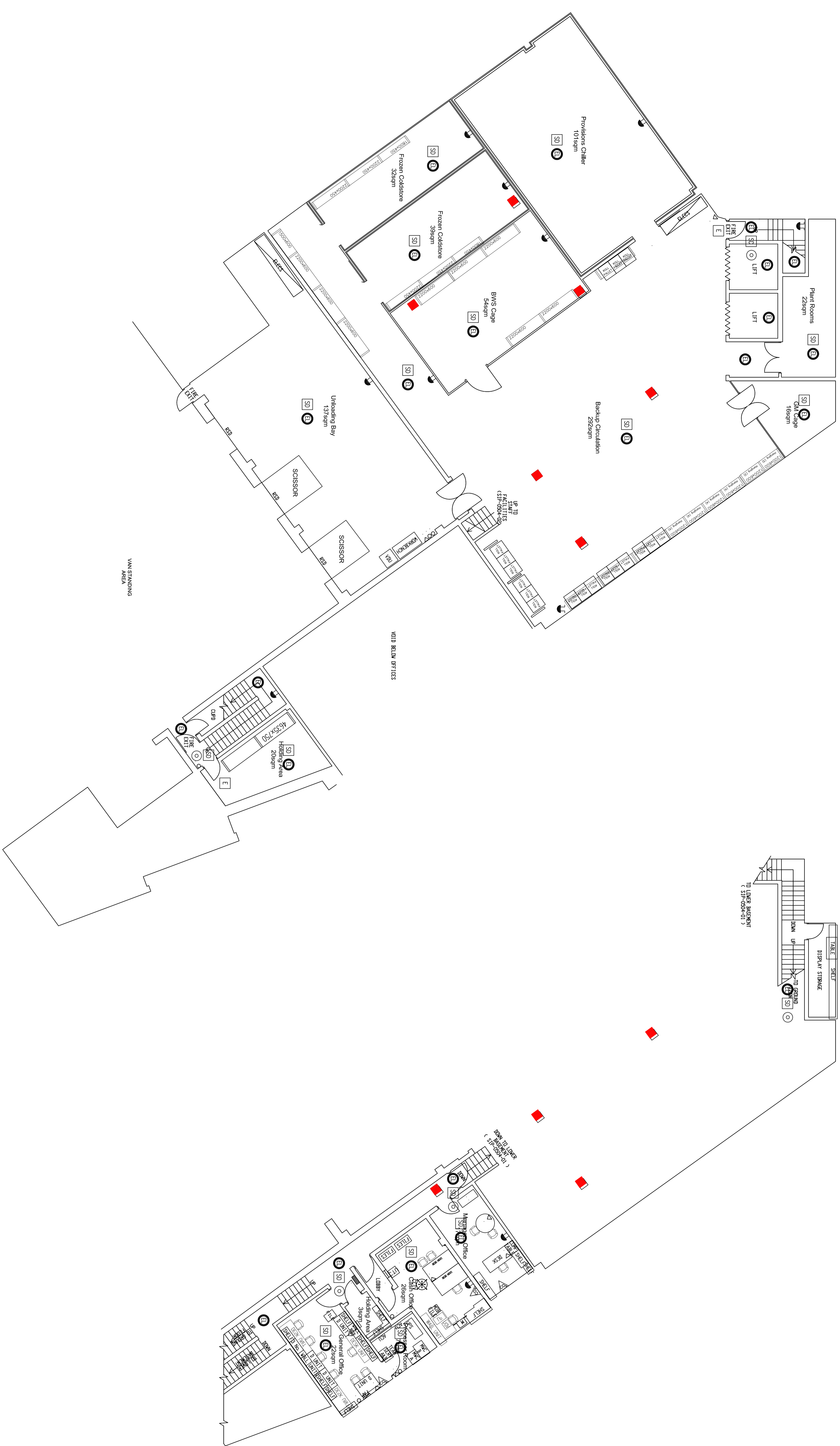
DESCRIPTION
[PB] PUSH BAR
[IS] FIREMAN'S SWITCH
[C] FIRE ALARM CALL POINT
[E] FIRE EXTINGUISHER WATER
[A] FIRE EXTINGUISHER FOAM
[A] FIRE EXTINGUISHER DRY POWDER
[A] FIRE EXTINGUISHER CARBON DIOXIDE
[A] FIRE BLANKET
[A/F] AFT MULTIPURPOSE EXTINGUISHER
[H] FIRE FIGHTING HOSE REEL
[E] FIRE EXIT DOORS
[SD] AUTOMATIC SMOKE DOORS
[E] DOORS WITH ELECTRO MAGNETIC LOCKS
[E] EXIT SIGN (FLUORESCENT)
[SD] SMOKE DETECTOR CEILING MOUNTED
[SD] HIDDEN FIRE DETECTOR
[A] FIRE ALARM BELL
[A] FIRE ALARM PANEL
[S] AUTOMATIC SPRINKLER POINTS
[C] EMERGENCY LIGHTING ILLUMINATED EXIT BOX

0504
PINNER

PROPOSED
FIRST FLOOR
STORE PLAN

DESIGNER/ARCHITECT	ADDRESS
JOANNE SURGUJY	CAD
DRAWING CREATION	SCALE
09.08.18	1:100
DRAWING NUMBER	REVISION
0504.F-01-1	-

REVISIONS



The entire store is to be licensed for the sale of alcohol and the provision of late night refreshment

LEGEND

DESCRIPTION	SYMBOL
PUSH BAR	[RB]
FIREMAN'S SWITCH	[13]
FIRE ALARM CALL POINT	[C]
FIRE EXTINGUISHER WATER	[A]
FIRE EXTINGUISHER FOAM	[V]
FIRE EXTINGUISHER DRY POWDER	[D]
FIRE EXTINGUISHER CARBON DIOXIDE	[X]
FIRE BLANKET	[B]
AUTOMATIC MULTIPURPOSE EXTINGUISHER	[4A]
FIRE EXTINGUISHER CARBON DIOXIDE	[X]
FIRE BLANKET	[B]
FIRE EXIT DOORS	[E]
DOORS WITH ELECTRO MAGNETIC COOKS	[K]
DOORS WITH ELECTRO MAGNETIC COOKS	[K]
EXIT SIGN (RUNNING MAN)	[L]
SMOKE DETECTOR CEILING MOUNTED	[SD]
HIDDEN FIRE DETECTOR	[H]
FIRE ALARM BELL	[T]
FIRE ALARM PANEL	[P]
AUTOMATIC SPRINKLER POINTS	[S]
EMERGENCY LIGHTING POINT	[L]
EMERGENCY LIGHTING (ILLUMINATED EXIT BOX)	[L]

0504
PINNER

PROPOSED
BASEMENT
STORE PLAN

DESIGNER NAME	AGENCY
PROJECT NAME	AD
DRAWING DATE	SCALE
31.07.2018	1:100
DRAWING NUMBER	REVISION
0504B01-1	-