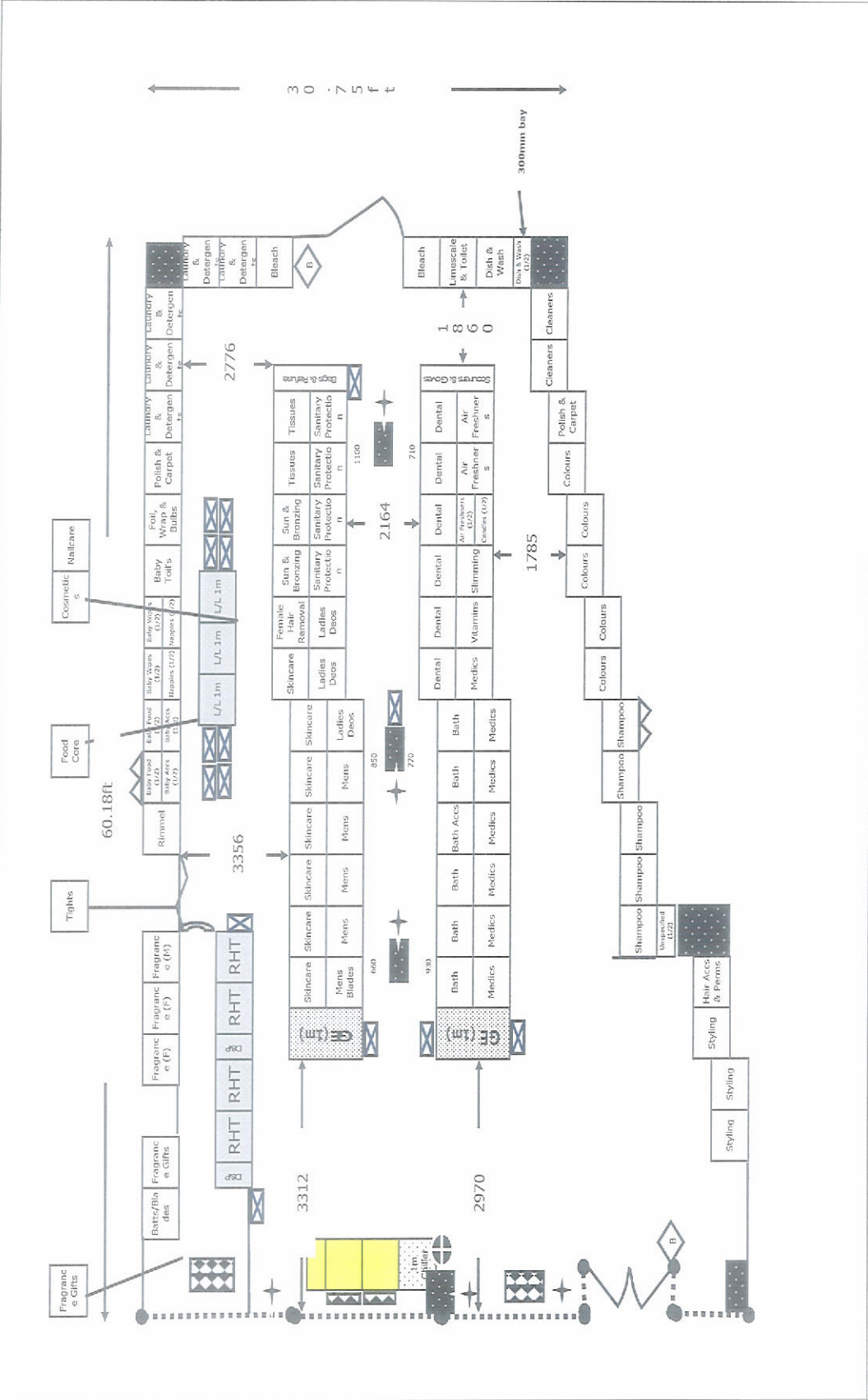


- Categories**
- Air Fresheners
 - Mans
 - Mens Blades
 - Baby Food
 - Nailcare
 - Baby Toilets
 - Rattles
 - Baby Wipes
 - Paper
 - Pet Food & Accessories
 - Bags & Refuse
 - Polish & Carpet
 - Bath
 - Bath Accs
 - Bath Mats
 - Sanitary Protection
 - Bins/Bins/Bins
 - Scissors & Gloves
 - Blades (roll)
 - Shampoo
 - Bleach
 - Skincare
 - C/Wool
 - Slimming
 - Candies
 - Styling
 - Cheers
 - Sun & Bronzing
 - Colours
 - Tights
 - Colours
 - Tissues
 - Cos Bags
 - Unspecified
 - Cosmetics
 - Dental
 - Vitamins
 - Dish & Wash
 - Dish & Wash
 - Dishinfects
 - Female Hair Removal
 - Foil, Wrap & Bubs
 - Food Core
 - Fragrance (F)
 - Fragrance (M)
 - Fragrance (M)
 - Fragrance Killis
 - Grocery
 - Hair Accs & Perms
 - Labels Deco
 - Laundry & Detergents
 - Laundry Deco
 - Laundry & Detergents
 - Uniscale & Toilet
 - Medics



- Key**
- 1 metre bay
 - 1/2 metre bay
 - Candola End (1m)
 - Candola End (.65m)
 - Candola End (.8m)
 - D and P Till Pod
 - Left Hand Till
 - Right Hand Till
 - Low Level (1m)
 - Low Level (1.25m)
 - Low Level (.625m)
 - Elec. Cup
 - 1m Standard Chiller
 - 1.2m Bands Chiller
 - Chiller (Other)
 - Candola End (Core Section)
 - LH Door
 - RH Door
 - Double Door
 - Wall
 - Slat Wall
 - Window
 - Shutter
 - Stairs
 - Stairs
 - Single Ladder Bay
 - Double Ladder Bay
 - Slope Up
 - Lift
 - Security Screen
 - Single Socket
 - Double Socket
 - Aisle Width
 - Break Glass Point
 - Pillar
 - Mirca Bubble Tree
 - Stack
 - Dump Bin



HEALTH HOME BEAUTY

Last Updated (pos): 13/12/12
Updated By: Laurence Butfield

To be reviewed	
No. of Dump Bins	
No. of Stacks	
No. of Ladder Bays (1m)	0
No. of Ladder Bays (1/2m)	0

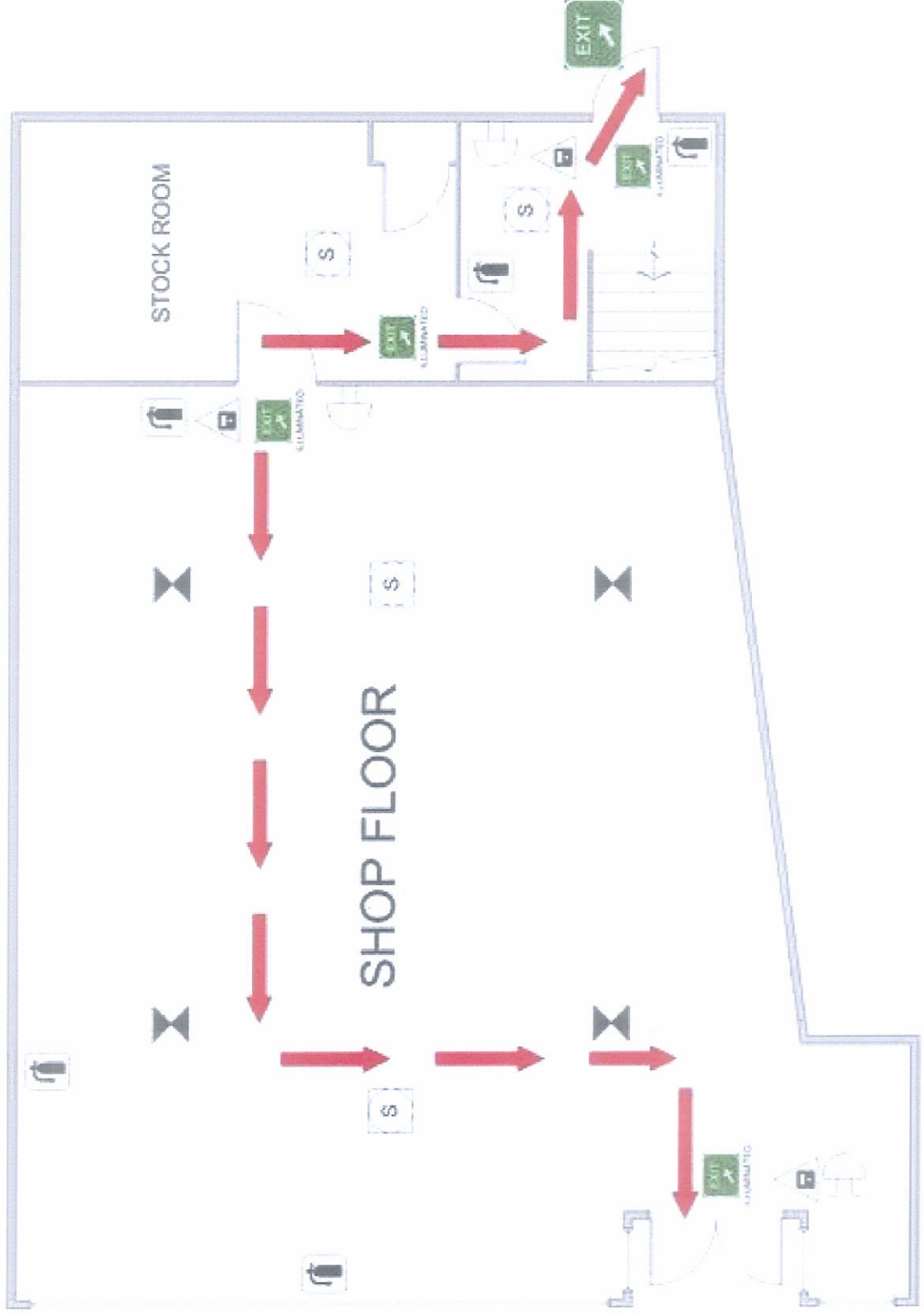
Store Name	2470
Store Number	Harrow
Equipment Type	1m Caem / White
Floor Area (sq m)	2174
Celling Height (cm)	269
No. of Bays (not inc Frag)	91

FRA DRAWING

SITE REFERENCE: Savers – 2470 – Harrow

LEGEND

- HOSE REEL
- FIRE EXIT
- ILLUMINATED EXIT SIGN
- BREAK GLASS CALLPOINT
- DIRECTIONAL SIGNAGE
- SOUNDER
- SMOKE DETECTOR
- HEAT DETECTOR
- EMERGENCY PULL CORD
- FIRE EXTINGUISHER
- EVACUATION ROUTE
- EMERGENCY LIGHTING
- SPRINKLER HEAD



GROUND FLOOR