

LEGEND

- Devices area where recommended activities will take place
- ▲ CO2 FIRE EXTINGUISHER
- ▲ FOAM FIRE EXTINGUISHER
- ▲ WET CHEMICAL FIRE EXTINGUISHER
- ▲ WATER FIRE EXTINGUISHER
- ▲ FIRE BANNER
- ▲ CCTV Internal device pointing in direction of view
- ▲ CCTV External device pointing in direction of view
- ▲ FIRE ALARMS (bell, glass call point) 120mm ATC
- ▲ L2 FIRE ALARMS (system to be installed in accordance with BS 5839 part 1)
- ▲ Escalator signage to BS 5499 part 1
- ▲ Fire extinguishers to be provided at the points as shown on plan
- NOTE: All CCTV equipment fixed externally to be above a level that can not be easily accessed



Part Ground Floor Plan



Location Plan - Scale 1 : 1250

— SITE BOUNDARY

Extent of ground floor plan shown above



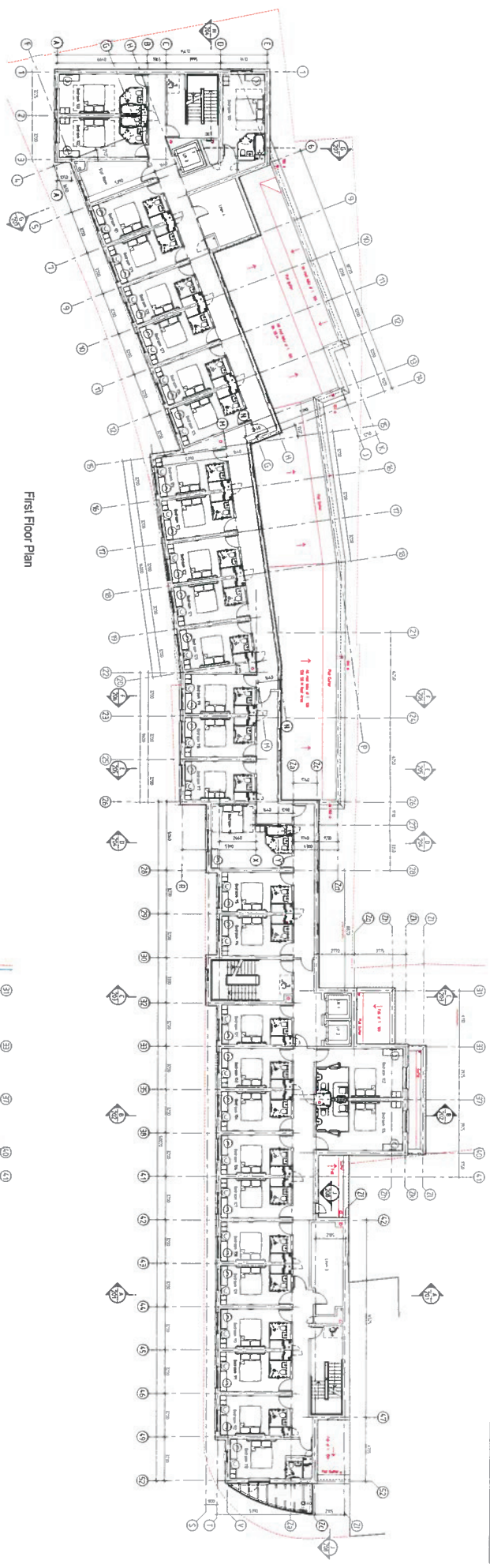
Rev	Notes	Date
01	M.P.A.C Trading	

Proposed Travelodge
Temple House, Greenhill Way
Harrow

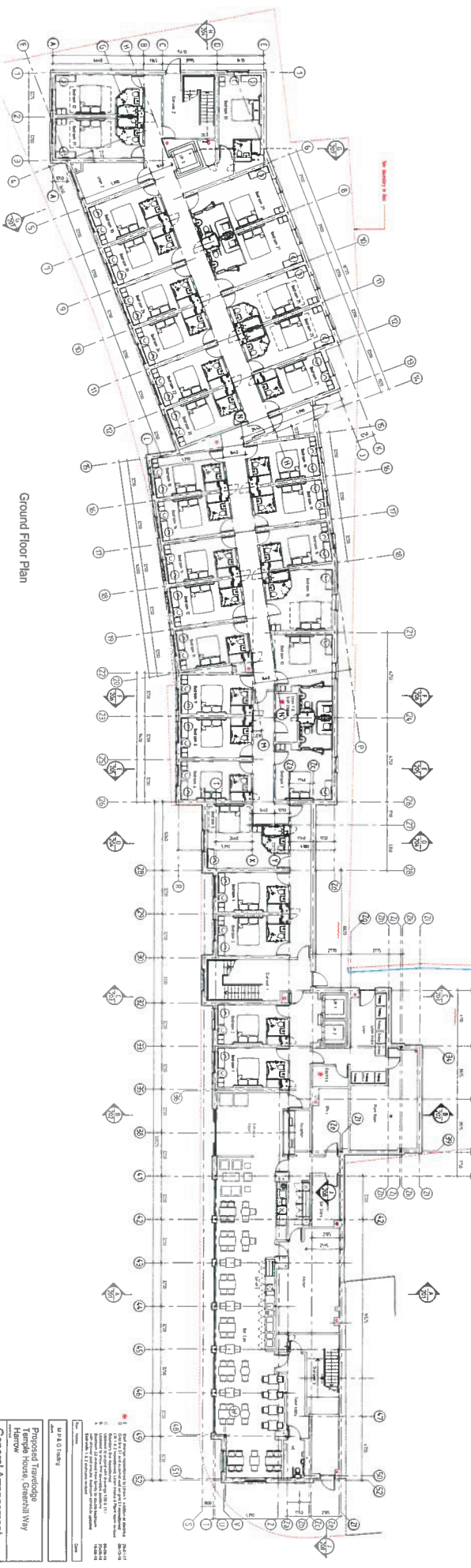
Liquor License Plan
Ground Floor Plan
Location Plan

April 2017	1 : 100 @ A1
TLH	709





First Floor Plan



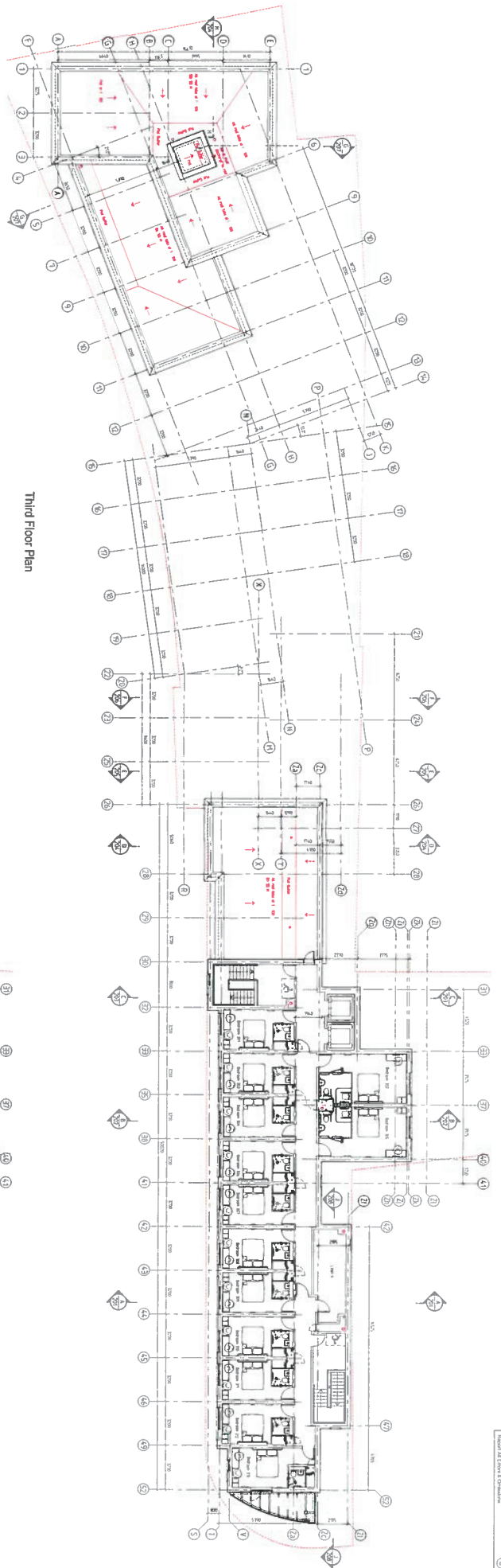
Ground Floor Plan

Room Schedule

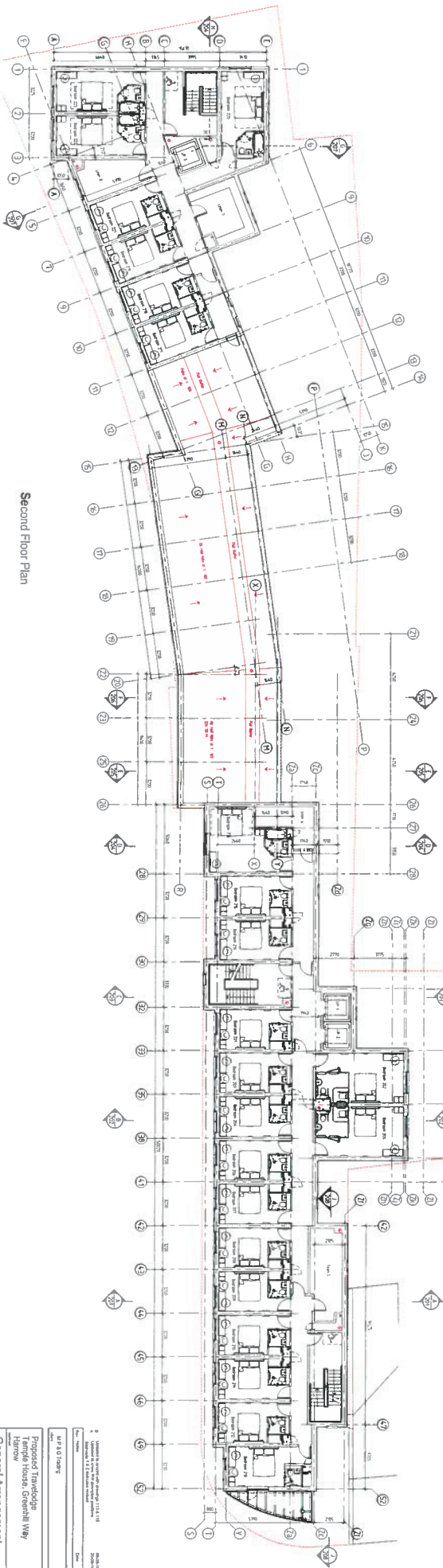
Room No.	Room Name	Area (sqm)	Level
001	Ground Floor	1,100	Ground Floor
002	1st Floor	1,100	1st Floor
003	2nd Floor	1,100	2nd Floor
004	3rd Floor	1,100	3rd Floor
005	Total Bedrooms	1,100	Total Bedrooms

Proposed Tenanted
 Temple House, Greenhill Way
 Heron
**General Arrangement
 Ground & 1st Floor Plan**
 November 2015 1:100 @ A0
 TLH
 MS-E

SLD design
 151, The Quadrant, London, W14 8NS
 Tel: 020 7592 2000
 Fax: 020 7592 2001
 Email: info@slddesign.com



Third Floor Plan



Second Floor Plan

Room Schedule

Room No.	Room Name	Area (sqm)
1	Ground Floor	1000
2	1st Floor	1000
3	2nd Floor	1000
4	3rd Floor	1000
5	Total Bedrooms	1000

Proposed Timberidge
 Temple House, Greenwich
 Hamrow
 General Arrangement
 2nd & 3rd Floor Plan
 November 2015
 1:100 @ A0
 T14
 106 B

SLD design
 150 Tottenham Court Road, London W1P 0LP
 Tel: +44 (0)20 7626 6600
 www.slddesign.com