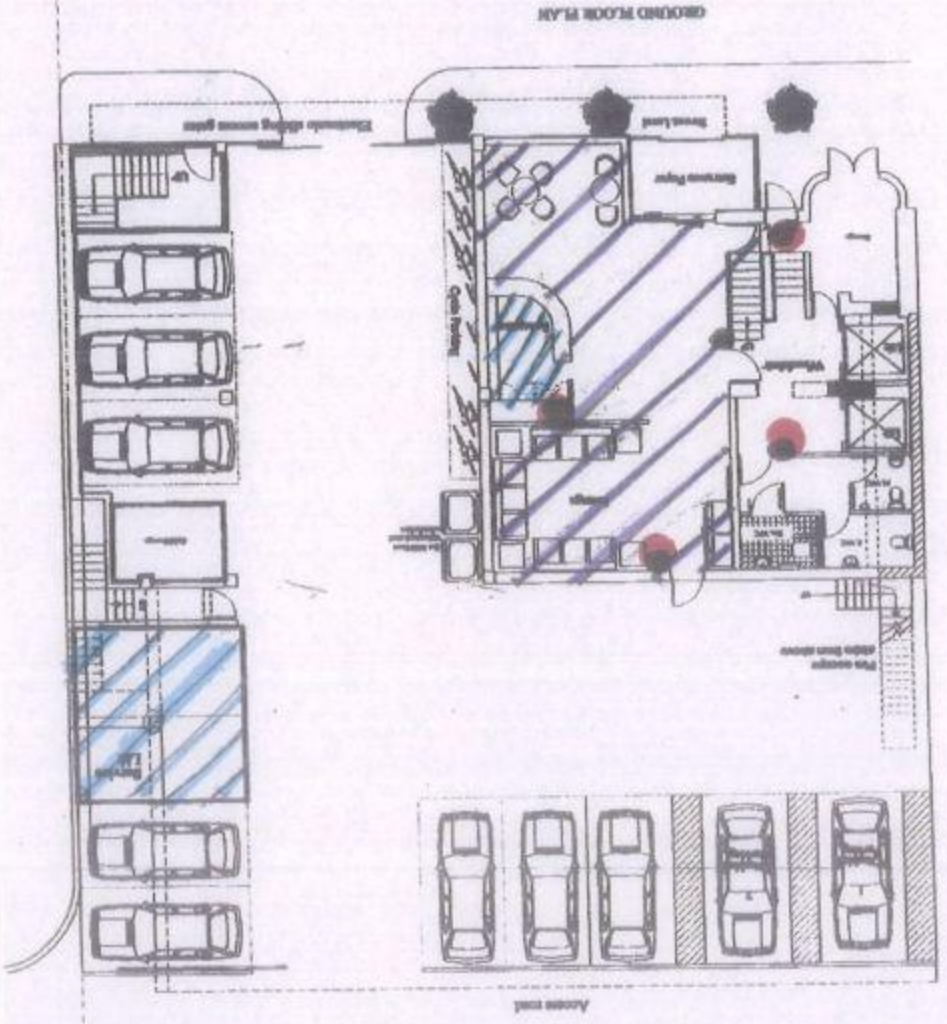


SCANDOR HOTEL  
 26 - 49 NORTHBOLT ROAD  
 HARKOV  
 HAZ OPV  
 HERTVAALIN HOTEL  
 GROUND FLOOR AND FIRST FLOOR PLAN  
 1:100 @ A2  
 MAY 2010  
 10249  
 21

JPB  
 JPB  
 JPB



→ Sale of Alcohol to residents of hotel only.  
 → foam + CO<sub>2</sub>  
 → consumption of alcohol



10349  
 08  
 1:100 @ A2  
 JULY 2008

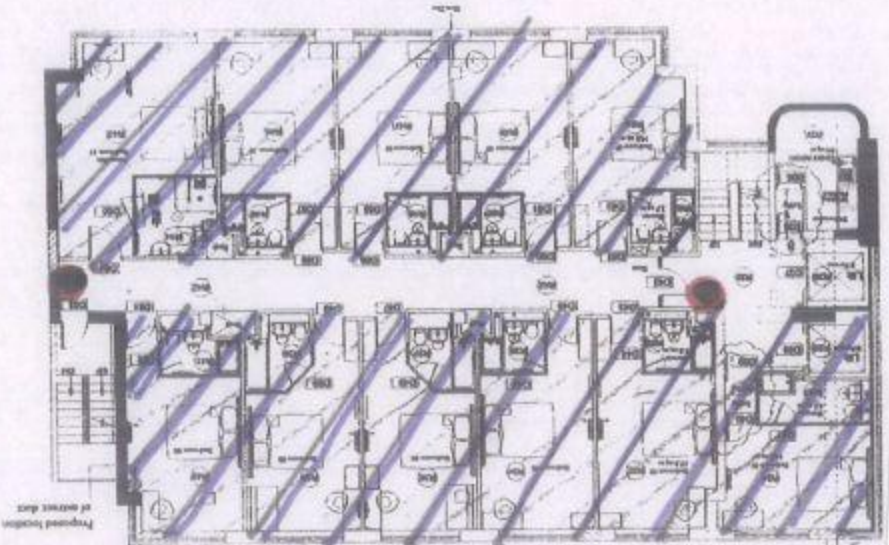
PROPOSED 1st, 2nd, FLOOR PLANS

EUROTRAVELLER HOTEL

SCAMPOOR HOUSE  
 56 - 60 NORTHOLT ROAD  
 HARROW  
 HA2 0DW



SECOND FLOOR PLAN (G8 & 4th Stair)



- beams + CO<sub>2</sub>  
 - consumption of alcohol

**12 SMOKE VENTILATION TO CORRIDORS**  
 Supply and install HR 100R Whitehouse heat recovery units by Vent-Axia Clean Air Systems. All ducting to be through ceiling voids and vertical ducts to external air. Typical for all floors.

Landings and outside  
 doors shall be LOW ENERGY  
 doors leading to be by an A/C  
 heating and cooling system.  
 Hot water heating system by gas

**12 EMERGENCY LIGHTING**  
 Lighting to escape stairs should be on a separate circuit from that supplying any other part of the escape route.  
 Standards for the installation of a system of escape lighting to BS 5266-1:2005.  
**12 EXIT SIGNS**  
 Staircase lobby to have emergency exit signs) of adequate size complying with the Health and Safety (Safety signs and signals) Regulations 1996. In general, signs complying with BS 5499-1:2002.  
 An exit sign and connecting certificate to be provided and forwarded to building control prior to occupation.

**NOTE**  
 9 All doors in corridors to have smoke seals and intumescent strips.  
 11 Smoke ventilation to common corridors to be provided by pipe taken through ducts to external air.  
**12 SELF CONTAINED SMOKE ALARMS**  
 Mains operated self contained smoke alarms to be installed in accordance with BS 5839 part 6 2004. The alarms should be interconnected and installed in accordance with the manufacturers instructions to be supplied to the occupier. All smoke alarms to be interconnected.

4  
 10/10/08  
 10/10/08



