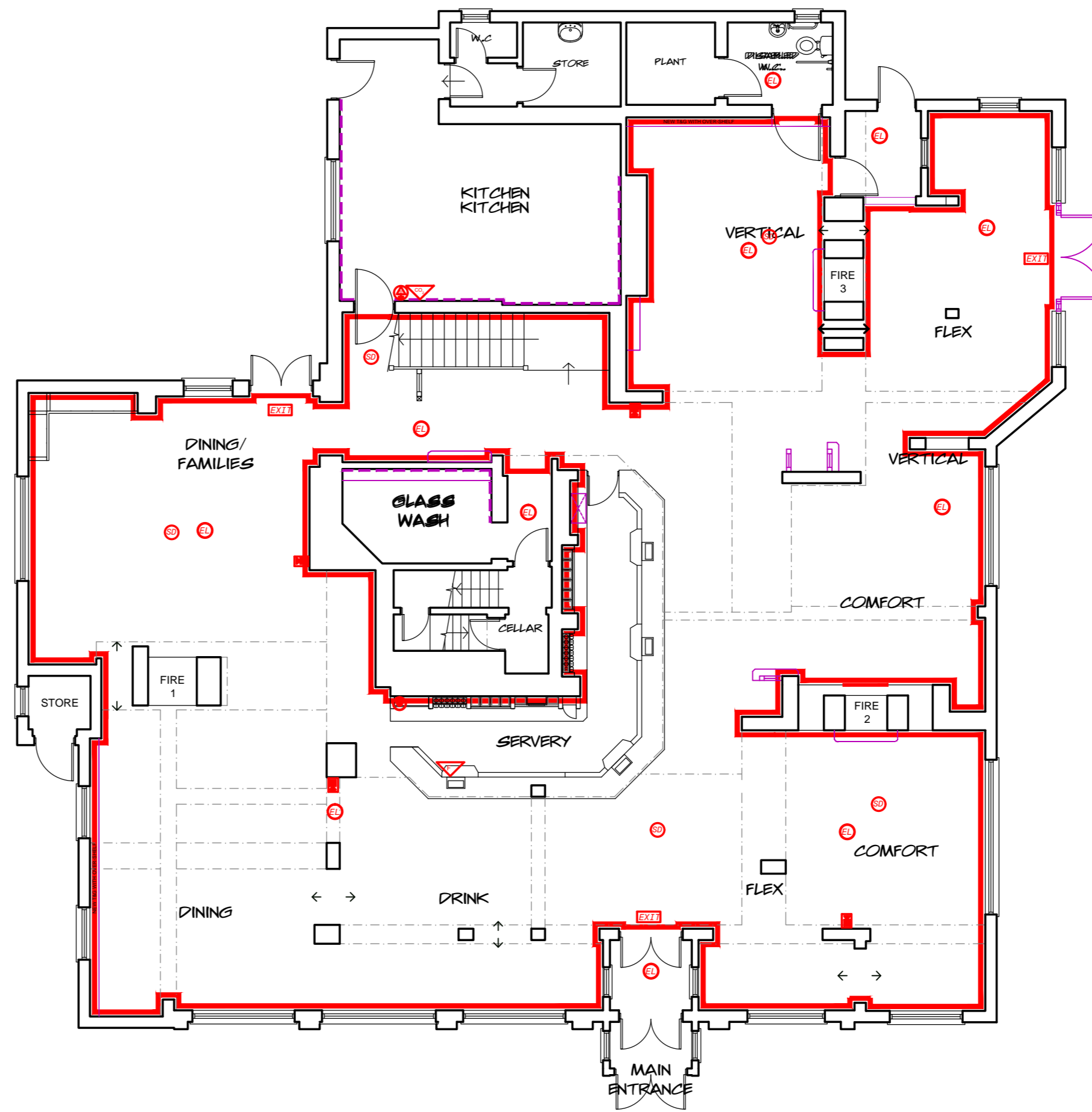
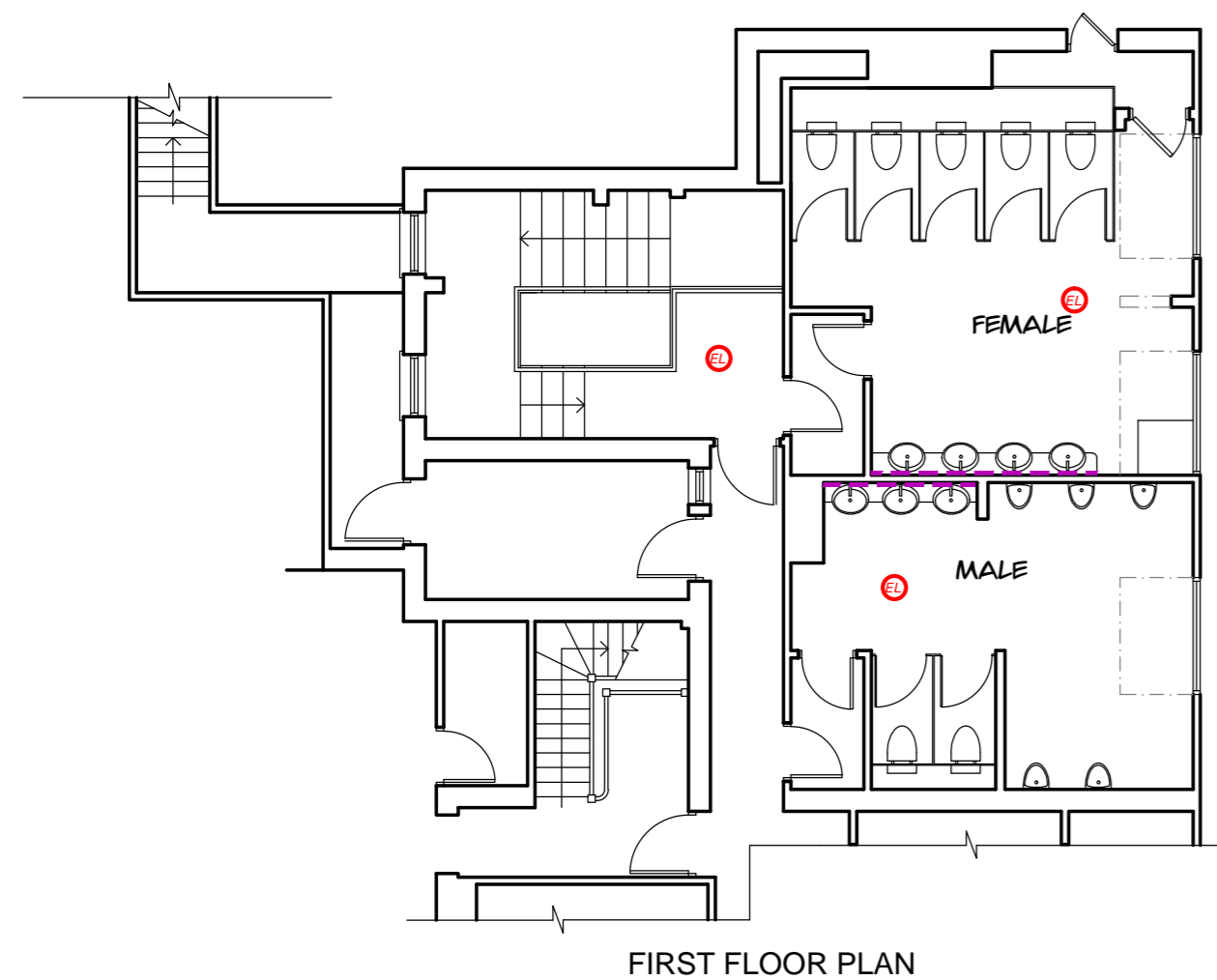


| Rev | Date | Initials | Comment |
|-----|------|----------|---------|
| | | | |



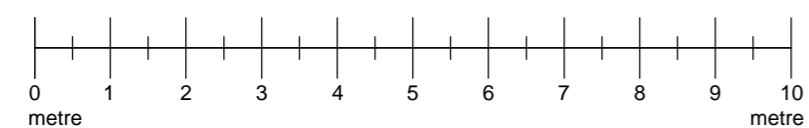
- Fire Symbols:**
- Alarm Call Point
 - Smoke Detector
 - Heat Detector
 - Fire Blanket
 - Alarm Sounder
 - Fire Action Notice
 - "Fire door Keep closed" signage
 - "Fire door Keep locked" signage
 - "Push Bar to open" and "Fire Door Keep Clear" signage
 - 30 min fire door with smoke seals
 - 60 min fire door with smoke seals
 - Self closing device
 - Vision Panel
 - Push Bar ironmongery
 - 3 hour self contained non-maintained luminaire
 - 3 hour self contained and maintained luminaire with arrow where necessary
 - 3 hour self contained and maintained external luminaire
 - Thumb turn - simple fastening
 - Diglock door release - with simple fastening to rear of door.
 - Xenon Flasher unit for DDA requirements, with sounder
 - Foam fire extinguisher
 - Carbon Dioxide fire extinguisher
 - Dry Powder fire extinguisher
 - 9-litre water fire extinguisher
 - Wet chemical fire extinguisher

Licensing key

Licensable activities

Note:
Items shown on this plan which are not part of the statutory requirements are shown for indicative purposes only. This would include loose or fixed furniture in certain circumstances, the position of toilet cubicles, CCTV cameras and fire safety equipment not specified in the Regulations. These are shown upon the plans for illustrative purposes only and may be moved at the discretion of the license holder.

The current location of fire safety equipment and other safety equipment is not shown as these may be subject to variation in the future as necessary and where applicable in liaison with the Fire Officer.



ABA architecture

Globe Works
Foolstone Road, Sheffield S6 3AE
0114 201 0023
www.abearchitecture.co.uk

architecture interior design brand development project management

Client
Mitchells & Butlers

Project
Duck in the Pond
Kenton Lane
Harrow
Middlesex
HA3 6AA
Tel: 020 8954 8144 BUN: 17777601

| | |
|--|---------------------|
| Drawing Name Proposed Ground Floor Layout | |
| Drawn By MLR | |
| Date July 2014 | Scale 1:100 (A2) |
| Status LICENSING | |
| Drawing no. 14-1490.101 | Revision - |

This drawing is the copyright of ABA architecture limited. Copyright is reserved by them and the drawing is issued on condition that it is not copied, reproduced, retained or disclosed to any unauthorised persons, either wholly or in part without the written consent of ABA architecture limited. This drawing has been prepared for presentation purposes only. Consultants wishing to use the drawing for guidance must check all dimensions on site prior to finalising their element of work to be undertaken.