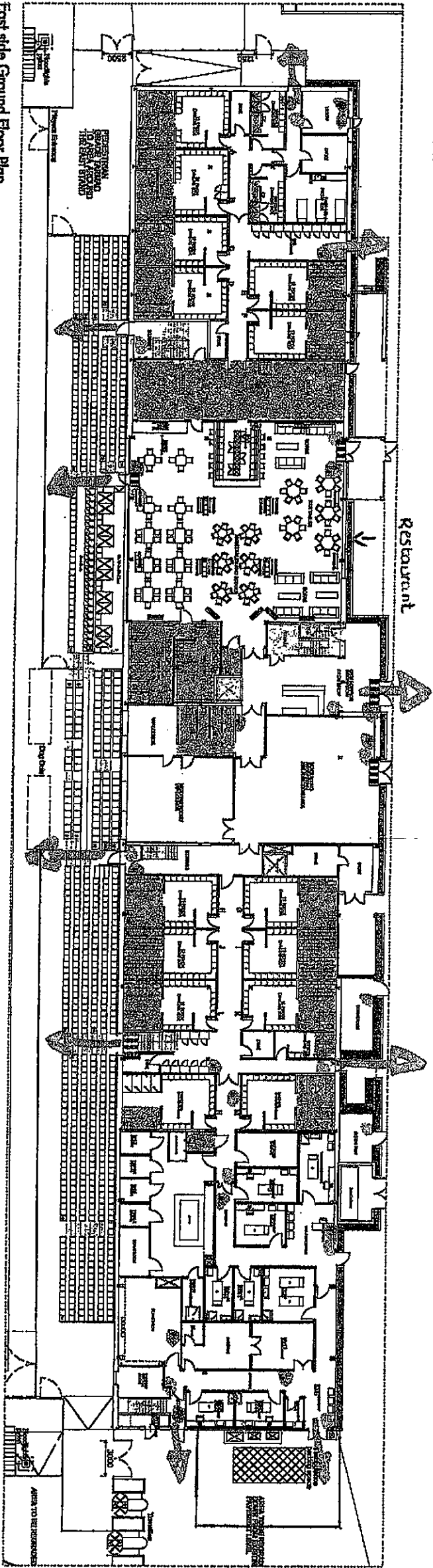
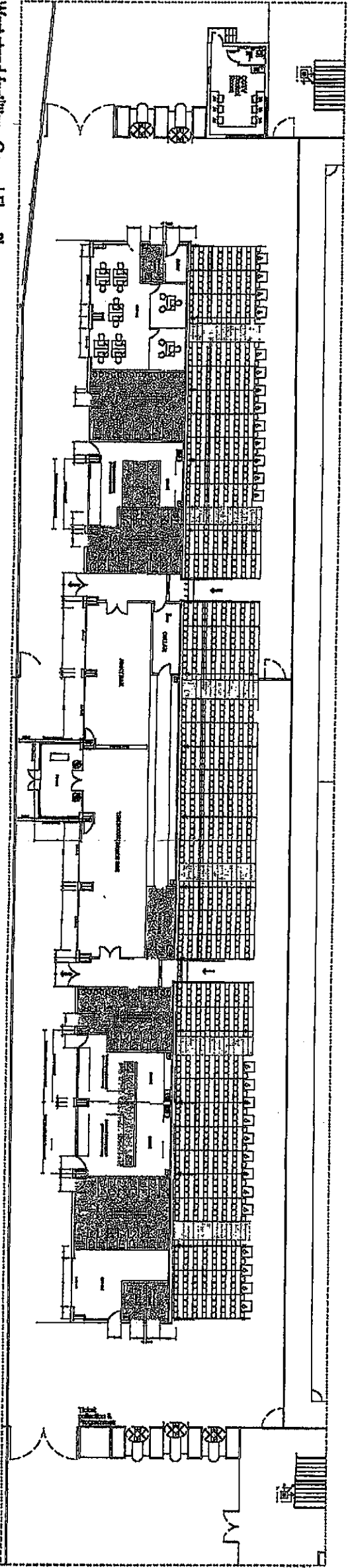


East side First Floor Plan

- Areas with steps or stairs
- Areas with public conveniences
- Areas with kitchen
- Fire Call Point
- Fire Exting.
- Fire Exit Route



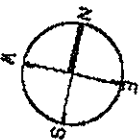
East side Ground Floor Plan



West side Ground Floor Plan



THE SALE OF ALCOHOL, PROVISION OF REGULATED ENTERTAINMENT AND THE PROVISION OF LATE NIGHT REFRESHMENT MAY TAKE PLACE IN ANY PART OF THE PREMISES.



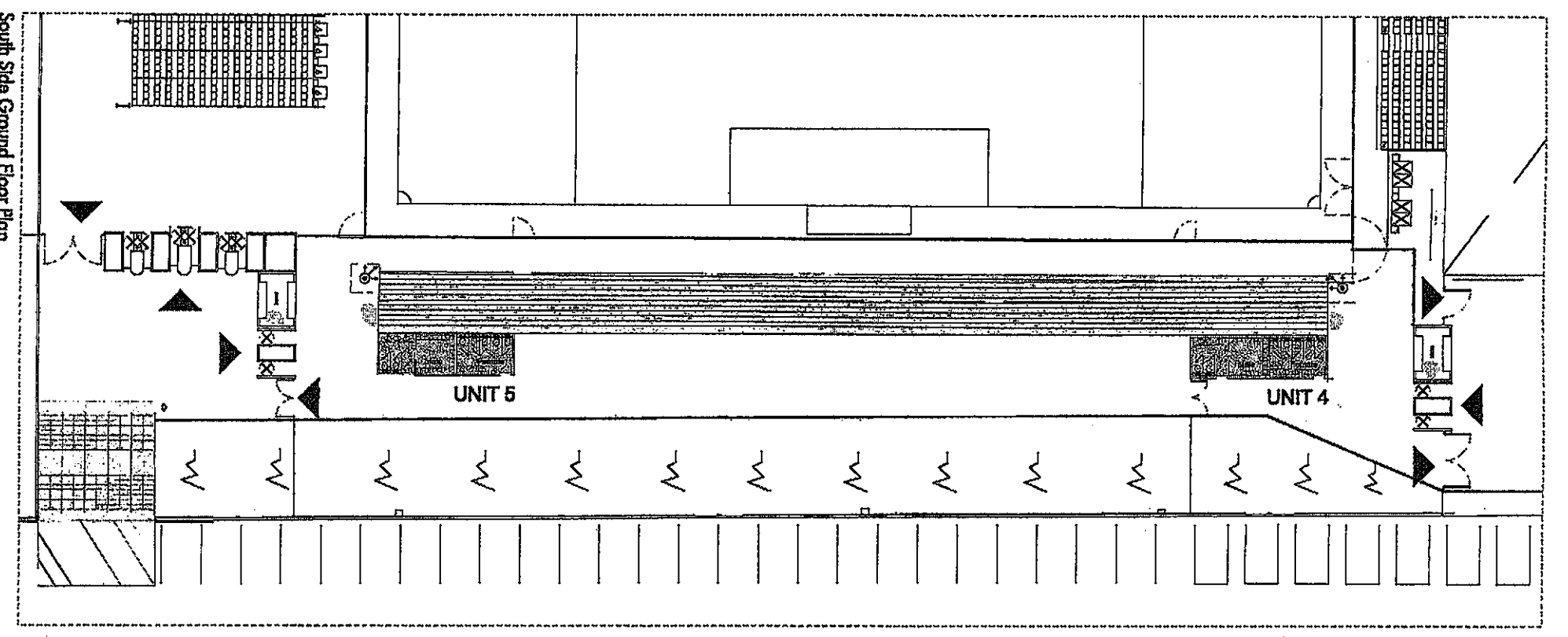
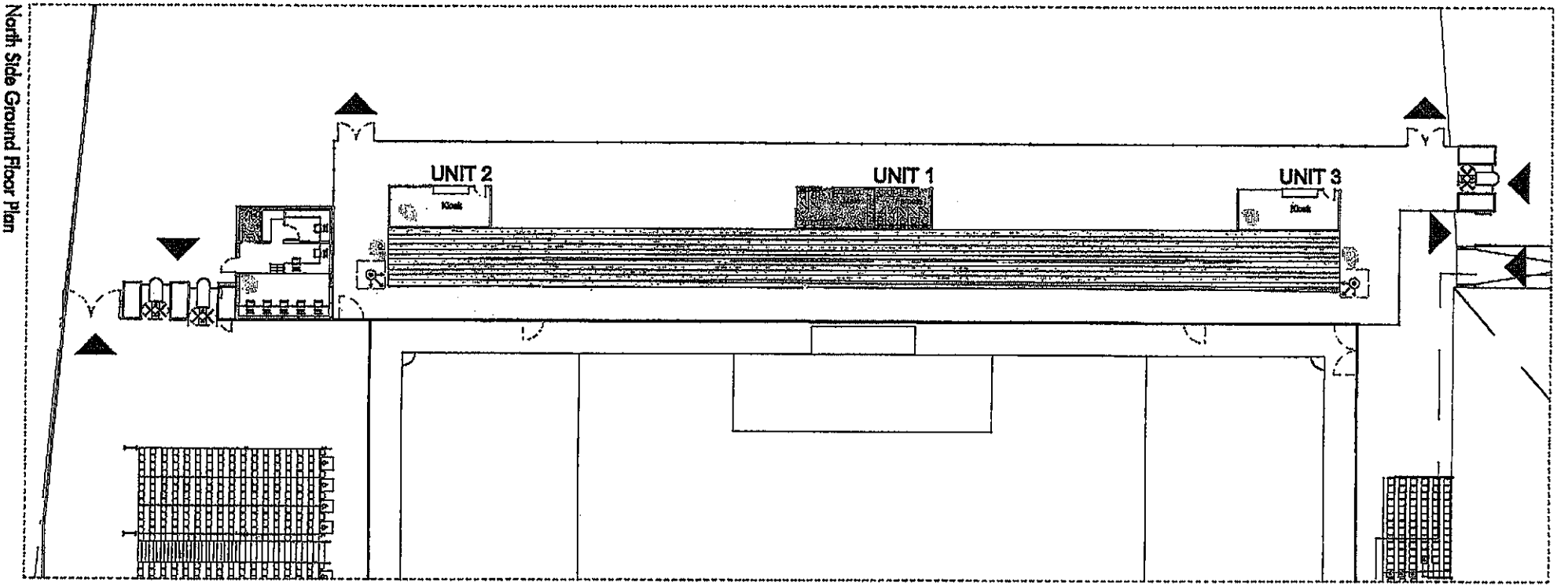
FOR INFORMATION ONLY

**AndArchitects**

The Fibre - Station Development Ltd

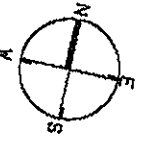
380 (0)118

January 2013



- Areas with steps or stairs
  - Areas with public conveniences
  - Points of egress
  - Points of access
- FOR EXAMINERS**

THE SALE OF ALCOHOL, PROVISION OF REGULATED ENTERTAINMENT AND THE PROVISION OF LATE NIGHT REFRESHMENT MAY TAKE PLACE IN ANY PART OF THE PREMISES.



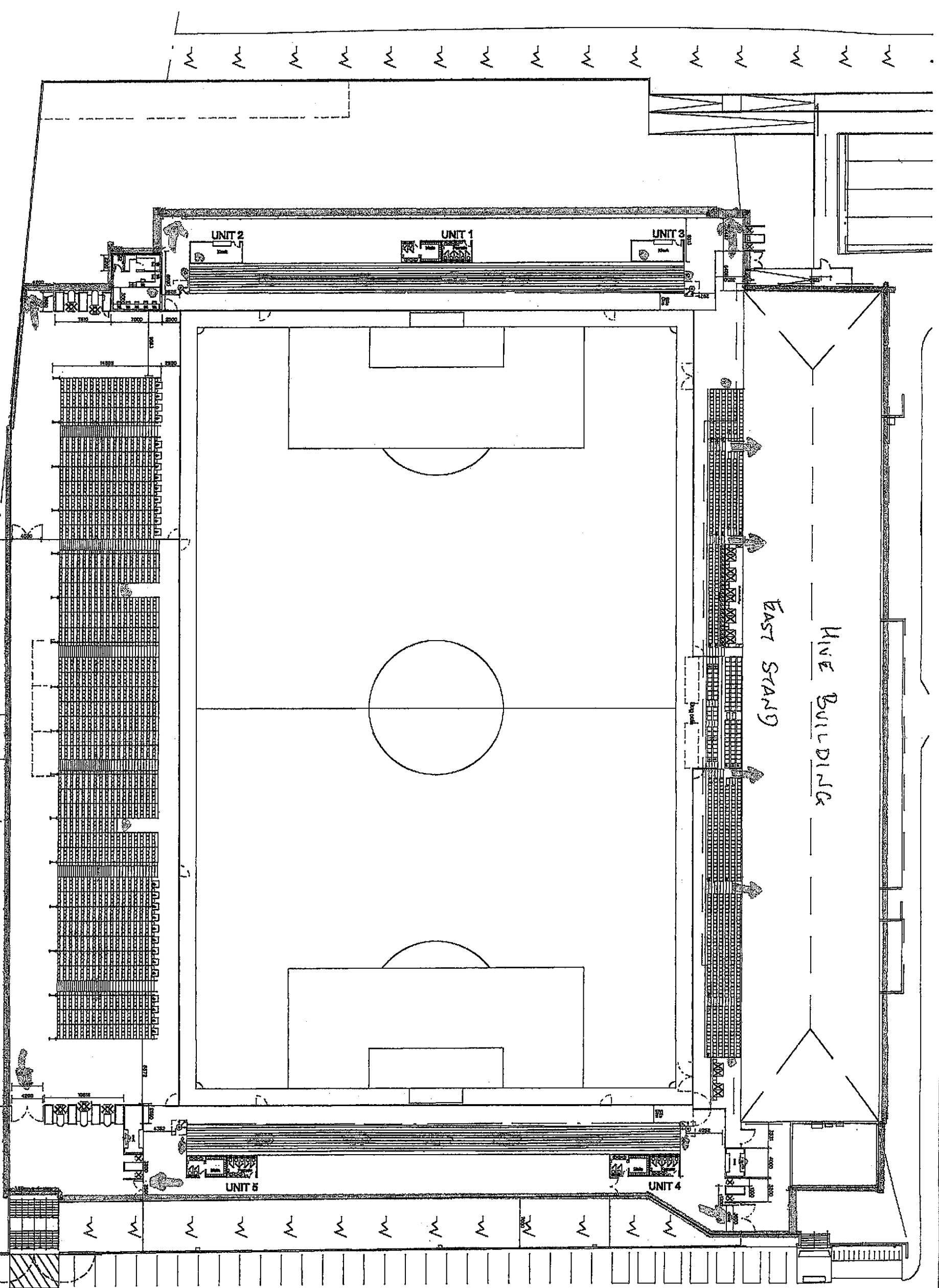
**FOR INFORMATION ONLY**

**AndArchitects**

15 Woodlands Central, 15th Floor, Woodlands, Singapore 738000  
 Tel: +65 67 27 27 27  
 Fax: +65 67 27 27 27  
 Email: info@andarchitects.com

Project: The Five - Stadium Development  
 Drawing No: North East Side @ Ground Floor  
 Date: January 2013  
 Drawing No: 380 (0115)  
 Scale: A

This drawing is the property of AndArchitects. It is to be used for the project and site only. It is not to be reproduced, stored in a retrieval system, or transmitted in any form or by any means, electronic, mechanical, photocopying, recording, or by any information storage and retrieval system, without the prior written permission of AndArchitects.



THE SALE OF ALCOHOL, PROVISION OF REGULATED ENTERTAINMENT AND THE PROVISION OF LATE NIGHT REFRESHMENT MAY TAKE PLACE IN ANY PART OF THE PREMISES.

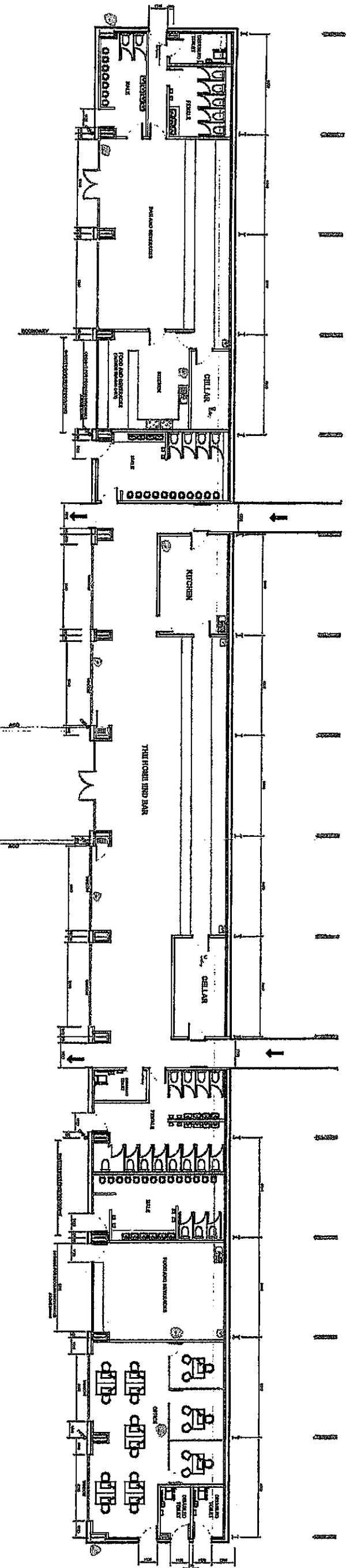
- STADIUM BORDER
- EXIT
- ROUTES
- EMERGENCY LIGHTING
- FIRE EXTINGUISHERS

**FOR INFORMATION ONLY**

**AndArchitects**

The Hive (PEP) Developments Ltd  
 The Hive - Stadium Development  
 Stadium Setting Out  
 Date: January 2013  
 Drawing: 380 AL(0)112

Information provided for the purpose of the application for planning permission only. It is not intended to be used for any other purpose. The information is provided on the basis that it is correct and complete. AndArchitects does not accept any liability for any loss or damage, whether direct or indirect, arising from the use of this information.




Fire EXTINGUISHERS

WEST STAND

**Proposed Internal Layout Plan**

Internal Fit Out, External Doors and Windows to form part of main Contractors Package

THE SALE OF ALCOHOL, PROVISION OF ENTERTAINMENT AND THE PROVISION OF LATE NIGHT REFRESHMENT MAY TAKE PLACE IN ANY PART OF THE PREMISES.

 <p>Evans &amp; Sisk Seating          111, 113, 115, 117, 119, 121, 123, 125, 127, 129, 131, 133, 135, 137, 139, 141, 143, 145, 147, 149, 151, 153, 155, 157, 159, 161, 163, 165, 167, 169, 171, 173, 175, 177, 179, 181, 183, 185, 187, 189, 191, 193, 195, 197, 199, 201, 203, 205, 207, 209, 211, 213, 215, 217, 219, 221, 223, 225, 227, 229, 231, 233, 235, 237, 239, 241, 243, 245, 247, 249, 251, 253, 255, 257, 259, 261, 263, 265, 267, 269, 271, 273, 275, 277, 279, 281, 283, 285, 287, 289, 291, 293, 295, 297, 299, 301, 303, 305, 307, 309, 311, 313, 315, 317, 319, 321, 323, 325, 327, 329, 331, 333, 335, 337, 339, 341, 343, 345, 347, 349, 351, 353, 355, 357, 359, 361, 363, 365, 367, 369, 371, 373, 375, 377, 379, 381, 383, 385, 387, 389, 391, 393, 395, 397, 399, 401, 403, 405, 407, 409, 411, 413, 415, 417, 419, 421, 423, 425, 427, 429, 431, 433, 435, 437, 439, 441, 443, 445, 447, 449, 451, 453, 455, 457, 459, 461, 463, 465, 467, 469, 471, 473, 475, 477, 479, 481, 483, 485, 487, 489, 491, 493, 495, 497, 499, 501, 503, 505, 507, 509, 511, 513, 515, 517, 519, 521, 523, 525, 527, 529, 531, 533, 535, 537, 539, 541, 543, 545, 547, 549, 551, 553, 555, 557, 559, 561, 563, 565, 567, 569, 571, 573, 575, 577, 579, 581, 583, 585, 587, 589, 591, 593, 595, 597, 599, 601, 603, 605, 607, 609, 611, 613, 615, 617, 619, 621, 623, 625, 627, 629, 631, 633, 635, 637, 639, 641, 643, 645, 647, 649, 651, 653, 655, 657, 659, 661, 663, 665, 667, 669, 671, 673, 675, 677, 679, 681, 683, 685, 687, 689, 691, 693, 695, 697, 699, 701, 703, 705, 707, 709, 711, 713, 715, 717, 719, 721, 723, 725, 727, 729, 731, 733, 735, 737, 739, 741, 743, 745, 747, 749, 751, 753, 755, 757, 759, 761, 763, 765, 767, 769, 771, 773, 775, 777, 779, 781, 783, 785, 787, 789, 791, 793, 795, 797, 799, 801, 803, 805, 807, 809, 811, 813, 815, 817, 819, 821, 823, 825, 827, 829, 831, 833, 835, 837, 839, 841, 843, 845, 847, 849, 851, 853, 855, 857, 859, 861, 863, 865, 867, 869, 871, 873, 875, 877, 879, 881, 883, 885, 887, 889, 891, 893, 895, 897, 899, 901, 903, 905, 907, 909, 911, 913, 915, 917, 919, 921, 923, 925, 927, 929, 931, 933, 935, 937, 939, 941, 943, 945, 947, 949, 951, 953, 955, 957, 959, 961, 963, 965, 967, 969, 971, 973, 975, 977, 979, 981, 983, 985, 987, 989, 991, 993, 995, 997, 999</p>		<p>FOR APPROVAL</p> <table border="1"> <tr> <td>DATE</td> <td>BY</td> <td>REVISION</td> </tr> <tr> <td> </td> <td> </td> <td> </td> </tr> </table>	DATE	BY	REVISION			
DATE	BY	REVISION						
<p>Evans &amp; Sisk Seating          111, 113, 115, 117, 119, 121, 123, 125, 127, 129, 131, 133, 135, 137, 139, 141, 143, 145, 147, 149, 151, 153, 155, 157, 159, 161, 163, 165, 167, 169, 171, 173, 175, 177, 179, 181, 183, 185, 187, 189, 191, 193, 195, 197, 199, 201, 203, 205, 207, 209, 211, 213, 215, 217, 219, 221, 223, 225, 227, 229, 231, 233, 235, 237, 239, 241, 243, 245, 247, 249, 251, 253, 255, 257, 259, 261, 263, 265, 267, 269, 271, 273, 275, 277, 279, 281, 283, 285, 287, 289, 291, 293, 295, 297, 299, 301, 303, 305, 307, 309, 311, 313, 315, 317, 319, 321, 323, 325, 327, 329, 331, 333, 335, 337, 339, 341, 343, 345, 347, 349, 351, 353, 355, 357, 359, 361, 363, 365, 367, 369, 371, 373, 375, 377, 379, 381, 383, 385, 387, 389, 391, 393, 395, 397, 399, 401, 403, 405, 407, 409, 411, 413, 415, 417, 419, 421, 423, 425, 427, 429, 431, 433, 435, 437, 439, 441, 443, 445, 447, 449, 451, 453, 455, 457, 459, 461, 463, 465, 467, 469, 471, 473, 475, 477, 479, 481, 483, 485, 487, 489, 491, 493, 495, 497, 499, 501, 503, 505, 507, 509, 511, 513, 515, 517, 519, 521, 523, 525, 527, 529, 531, 533, 535, 537, 539, 541, 543, 545, 547, 549, 551, 553, 555, 557, 559, 561, 563, 565, 567, 569, 571, 573, 575, 577, 579, 581, 583, 585, 587, 589, 591, 593, 595, 597, 599, 601, 603, 605, 607, 609, 611, 613, 615, 617, 619, 621, 623, 625, 627, 629, 631, 633, 635, 637, 639, 641, 643, 645, 647, 649, 651, 653, 655, 657, 659, 661, 663, 665, 667, 669, 671, 673, 675, 677, 679, 681, 683, 685, 687, 689, 691, 693, 695, 697, 699, 701, 703, 705, 707, 709, 711, 713, 715, 717, 719, 721, 723, 725, 727, 729, 731, 733, 735, 737, 739, 741, 743, 745, 747, 749, 751, 753, 755, 757, 759, 761, 763, 765, 767, 769, 771, 773, 775, 777, 779, 781, 783, 785, 787, 789, 791, 793, 795, 797, 799, 801, 803, 805, 807, 809, 811, 813, 815, 817, 819, 821, 823, 825, 827, 829, 831, 833, 835, 837, 839, 841, 843, 845, 847, 849, 851, 853, 855, 857, 859, 861, 863, 865, 867, 869, 871, 873, 875, 877, 879, 881, 883, 885, 887, 889, 891, 893, 895, 897, 899, 901, 903, 905, 907, 909, 911, 913, 915, 917, 919, 921, 923, 925, 927, 929, 931, 933, 935, 937, 939, 941, 943, 945, 947, 949, 951, 953, 955, 957, 959, 961, 963, 965, 967, 969, 971, 973, 975, 977, 979, 981, 983, 985, 987, 989, 991, 993, 995, 997, 999</p>	<p>FOR APPROVAL</p> <table border="1"> <tr> <td>DATE</td> <td>BY</td> <td>REVISION</td> </tr> <tr> <td> </td> <td> </td> <td> </td> </tr> </table>	DATE	BY	REVISION				
DATE	BY	REVISION						