



Moelyn Mews

Preliminary Consultation Document

Submitted To:
Harrow Council
Job Number: 84764
Revision - Issue 01

Author: SN
Checked by: SN

Background

Ingleton Wood LLP are working on behalf of the London Borough of Harrow. As qualified Architects we have been asked to consider a number of sites across the Borough to assess potential for redevelopment and the creation of more homes in the area.

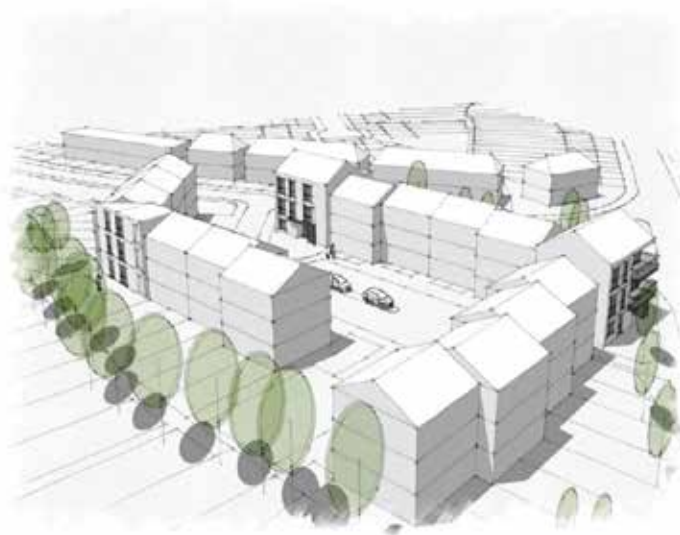
The Council and Ingleton Wood are keen to discuss these sites from the very earliest stages to understand how existing residents in the areas concerned view this strategy. In particular we wish to receive feedback on the specific site local to you in order that such comments can be considered with a view to influencing ongoing stages of design.

Nothing has yet been agreed and outcomes or designs have not really commenced.

However, some early visual ideas have been enclosed within this document to demonstrate what could be done and allow residents to comment. It is likely that with feedback these early ideas will change and develop.

We can also confirm that further consultation will take place should the Scheme designs develop.

Outline Ideas for Discussion



Possible number of new homes : 5 Houses

Billericay

10 Lake Meadows
Business Park
Woodbrook Crescent
Billericay
Essex CM12 0EQ
T: 01277 637 800
F: 01277 637 829

Colchester

874 The Crescent
Colchester Business Park
Colchester
Essex CO4 9YQ
T: 01206 224 270
F: 01206 843 715

London

1 Alie Street
London
E1 8DE
T: 020 7680 4400
F: 020 7680 9200

Norwich

43 All Saints Green
Norwich
Norfolk
NR1 3LY
T: 01603 666 847
F: 01603 629 798

www.ingletonwood.co.uk

architecture
building surveying
building services
planning
interior design
environmental design