

Home from home

Discover hidden Harrow

Take a breath of fresh air

Go shopping

That's entertainment

How to get here



Discover Harrow

2010 - 2012



Learn to speak English like a native with ADC's content-rich intensive programmes of language practice

Become more fluent and confident speaking English with an ADC intensive 2-week summer language practice programme in London. Gain an internationally recognised qualification in English* at ADC College and boost your career prospects.

ADC is accredited by the British Council, your guarantee of high quality and one that will provide you with an unforgettable rich, engaging and motivating experience.

Our comprehensive programmes will give you confidence to speak and communicate in everyday English quickly and easily – just like a native! Spread over 2 weeks, the balanced, rich and culturally full programmes contain over 120 hours of language practice and are specifically designed to give you all the confidence you need to speak English like the English!



(*Trinity College, London)



- 40 hours of classroom based language practice (in small class groups of no more than 12 students) designed to boost your confidence, improve your communication skills and give you better preparation for exam success.
- 60 hours additional language practice of full cultural immersion with native English speaking team leaders every week day afternoon plus full day cultural excursions in or around London at the weekend.
- 20 hours of additional language practice through evening social activities with native English speaking team leaders.

Selected feedback comments by participants from prior years:

- "Very Helpful and professional" – Maria Lanzillotti
- "An Unforgettable experience" – Emanuela Omnelli
- "My first experience in a family was wonderful" – Ylena Angiocchi
- "It was a perfect experience" – Elena Dodaro
- "I met many wonderful people It will be difficult to leave" Alessandra Lione
- "I would like to come back soon" – Assunta Greco
- "My host family were fantastic" - Carola lusi
- " The highlights for me was the London Eye and Madame Tussauds" - Saveria Paese
- "I had a fantastic experience" - Luca Corvino

ADC's highly competitive English language courses are offered at prices that compare very favourably with charges made by many tour operators for courses containing less than 40 hours of language practice with native speakers.

Our complete programmes include airport transfers (you will be met and accompanied by our representative to/from your local airport in Italy), welcome pack, insurance, cultural excursions every day, social activities most evenings, the cost of local transport and entrance tickets to cultural excursions and, critically, 24 hour support during your stay with us.

Full board accommodation is provided in either; Homestay (all host families are individually known to, and approved by, ADC) or campus residences in single or twin rooms (with en-suite facilities); both in secure and safe environments with 24 hour supervision.

ADC College, located in Harrow, a quiet leafy residential suburb in North West London, is an easy 15 minutes by fast train from the many major attractions of central London.

To reserve your place on our summer programme you register now! To confirm your place or request additional information, please call ADC College today!

Please call our office in London on 0044 20 8424 9424 or e-mail us on adc-ss10@adc-tt.co.uk





Discover Harrow Visitor Guide

**Harrow –
come and
discover
London’s
best-kept
secret**

Mention Harrow in a remote corner of the world and the response will be Harrow School, home to seven Prime Ministers including Sir Winston Churchill. However, did you also know that Harrow played a key part in changing the course of World War II, or that Handel was once one of our resident composers? Our hidden villages still provide a sanctuary to many of London’s most famous celebrities and we have nurtured the early musical talents of both Sir Elton John and James Blunt.

As one of London’s most intriguing outer boroughs,

Harrow offers villages to explore, rich heritage to uncover, award-winning cuisine to savour, and vibrant cultural diversity to dive into. It is the fascinating mix of old and new people and cultures which makes our borough truly unique. Where else can you enjoy a cup of afternoon tea, a Bollywood matinée, followed by an evening of Gilbert & Sullivan in Gilbert’s very own gardens?

Whether you are rediscovering your own neighbourhood, or venturing here for the first time, we hope this guide will inspire you to get out and discover one of London’s best-kept secrets.

Located in London Travelcard Zone 5, Harrow is uniquely positioned within easy reach of the buzz of central London and the tranquillity of leafy Hertfordshire and Buckinghamshire. Enjoying the best of both worlds, Harrow offers the amenities of a lively metropolitan town centre along with historic villages, rich heritage and great parks and open spaces.

Harrow is well connected to the rest of London by underground, and to the rest of the UK by train and by car via the M1 and M25. Our range of accommodation suits every price range from budget break weekends to 'blow the budget' special anniversary celebrations.

As one of the UK's most diverse communities, you'll find Morris dancers and Bollywood stars regularly rubbing shoulders together. From Maypole dancing to Diwali festivals, our events are among some of the quirkiest that you are likely to encounter. For the very best in international music concerts, we are also right on the doorstep of Wembley Stadium which is situated only 10 minutes by train from Harrow on the Metropolitan line.

This guide will give you a taste of what we can offer, some limited tourist information provision is available at Gayton Library, Garden House, 5 St John's Road, Harrow HA1 2EE, located next to the Best Western Cumberland Hotel and opposite Debenham's Department Store. Telephone: 020 8427 6012 or 020 8427 8986. Open Monday - Thursday 09:30-20:00, Friday 09:30-17:30 and Saturday 09:00-17:00. Closed on Sunday. Alternatively for more information online, please visit our website at www.visitharrow.co.uk.

Although this guide does contain contact details for all the attractions listed, we would recommend that you check opening times before you visit.

To find out about disabled access arrangements, please contact the venue using the information provided, or visit www.disabledgo.co.uk.

The information in this booklet has been researched and compiled to the best of our knowledge and checked as thoroughly as possible. It is correct to the best of the publisher's knowledge at the time of printing and the publishers can not accept any liability for errors and omissions caused.





Home from home

If you're seeking the comforts of home, Harrow has a range of accommodation to suit all tastes. For a city break to London that won't break the bank, you'll find affordable, value for money accommodation within close proximity to Wembley Stadium and the sights of central London. If you want to get away from it all, head to the villages of Pinner, Harrow on the Hill or the open countryside of Harrow Weald. From modern, centrally located chain hotels to

cheap and cheerful bed and breakfasts, our range of quality assessed accommodation takes away the worry of what to expect on arrival. Those travelling '*en famille*' will also benefit from free parking facilities in many of our hotels. If Harrow's leafy lanes have worked their charm, you can also end your stay with a trip to the home counties, since Hertfordshire and Buckinghamshire are situated right on our doorstep.



Best Western Cumberland Hotel

St John's Rd, Harrow HA1 2EF

The Best Western Cumberland Hotel is ideally located in the heart of Harrow. Close to shopping centres, parks, golf courses and public transport (10min to Wembley, 20min to the West End). The hotel boasts 84 en-suite bedrooms, the award-winning One St John's restaurant, Oscar's bar, conference, banqueting and function facilities. We look forward to having you stay.

Tel: 020 8863 4111

E-mail: reception@
cumberlandhotel.co.uk

Website: www.bw-
cumberlandhotel.co.uk

Tube: Harrow on the Hill



Brent X Hotel

165 Preston Hill, Kenton, Harrow HA3 9UY

An independent hotel suitable for businesses and leisure travellers to London. Brent X Hotel is a truly strategic hub for travellers. Close enough to central London to make a full day's visit comfortable, yet far enough to cut out the grind through traffic when you want to get away.

Rooms with TV, Wi-Fi, tea/coffee facilities, superior, spacious and comfortable en-suite rooms at affordable prices. Continental breakfast and full English breakfast available on demand. Courtyard and off-street parking. Taxis available for local transport or airport pickups and drop-offs. Wembley Stadium situated two miles away. Professional staff to help you at all times.

Tel: 020 8904 9394

Email: info@brentxhotel.com

Website: www.brentxhotel.com

Tube: Preston Road



Comfort Hotel Harrow

Northwick Park Road, Harrow HA1 2NT

A modern 3* hotel in a quiet residential location, yet just a three minute walk to Harrow Town Centre and close to Northwick Park Tube Station on the Metropolitan Line.

73 individually styled en-suite bedrooms to suit all tastes and pockets. The hotel offers Wi-Fi access throughout and a range of conference facilities to cater for up to 200 people. We hold a civil wedding licence. Our Seasons Lounge and Brasserie offers top quality European cuisine, with special menus for families and children. A large complimentary on-site, car park is available to all guests.

Tel: 020 8427 2899
Email: info@comfortharrow.com
Website: www.comfortharrow.com
Tube: Harrow on the Hill/
 Northwick Park



Crescent Hotel

58-62 Welldon Crescent HA1 1QR

The Crescent Hotel is situated in vibrant Harrow, only a short drive from Wembley and the West End with Heathrow airport easily accessible.

We aim to give high quality service to all our guests to guarantee your stay with us is not only stress free but enjoyable. All bedrooms are en-suite. Facilities include Sky internet, Wi-Fi connections in most of the rooms.

Tel: 020 8863 5491
E-mail: info@crescenthotels.co.uk
Fax: 020 8427 5965
Website: www.crescenthotels.co.uk
Tube: Harrow on the Hill





Grim's Dyke Hotel

Old Redding, Harrow Weald HA3 6SH

Set in forty acres of listed gardens and woodland, 9 period rooms are to be found in the house, including three four posters.

In the quiet garden lodge are a further 37 rooms including 3 garden suites with separate patio, 3 balcony rooms overlooking the secluded area of the garden and 2 accessible rooms. All have en-suite bathrooms, internet points and room safes.

Tel: 020 8385 3100

E-mail: reservations@grimsdyke.com

Website: www.grimsdykeconference.com

Tube: Harrow on the Hill/ Stanmore & taxi (approximately £6-£8 daytime)





Harrow Hotel

12-22 Pinner Road, Harrow HA1 4HZ

Our friendly 3 star, privately owned hotel is an ideal venue for both business and leisure guests due to its prime location and proximity to central London and Heathrow.

Offering 97 en-suite bedrooms just three minutes walk to Harrow on the Hill underground and town centre.

All our conference, banqueting and lounge and over 50% of our bedrooms have air conditioning. Wireless Internet is available throughout the rooms and public areas.

Lanfrancs restaurant serves International and French Cuisine and is a great place for Sunday Lunch.

Tel: 020 8427 3435
Fax: 020 8861 1370
Email: info@harrowhotel.co.uk
Website: www.harrowhotel.co.uk
Tube: Harrow on the Hill



Old Etonian Guest House & Restaurant

38 High Street, Harrow on the Hill
 HA1 3LL

The Old Etonian Hotel is situated in the heart of Harrow on the Hill next to the famous Harrow School. This first class hotel-restaurant is family run, all rooms are en-suite with satellite TV, hair dryer, coffee and tea facilities, ironing board, telephone and wireless broadband internet connection. All major credit cards accepted. Non-smoking hotel.

Tel: 020 8423 3854
E-mail: info@oldetonian.com
Website: www.oldetonian.com
Tube: Harrow on the Hill





Harrow Halls of Residence

Watford Road, Northwick Park HA1 3TP

Designed to harmonise with the environment, the on-campus complex offers en-suite rooms, huge shared kitchens, a large TV/common room, coin operated launderette, CCTV and parking on-site.

Overlooking green open spaces, the recently constructed hall is dominated on one side by the tall profile of Harrow-on-the-Hill and a short bus ride takes you to the lively town centre, with its contrasting and traditional atmosphere, where visitors can find a wide range of activities. Ideal for public transport and road travel, 20 minutes to Baker Street, also convenient for visiting the Home Counties with easy reach of the M25 and of Heathrow airport.

Tel: 0207 911 5181

Fax: 0207 911 5037

E-mail: summeraccommodation@westminster.ac.uk

Website: westminster.ac.uk/summeraccommodation

Tube: Northwick Park



Ratings are awarded annually either by the AA or Quality in Tourism. For more information on the different ratings visit: www.qualityintourism.com or www.theaa.com.

The proprietors themselves provide the descriptions of their own establishments and other details for each advertisement.

Many establishments have their own websites linked to our website, www.visitharrow.co.uk, where you'll find more details.

Please mention the Harrow visitor guide or website when booking with them.

Please note that ratings are awarded on an annual basis. There may be changes to the current ratings during the lifetime of this guide





Discover hidden Harrow

Harrow has over 900 years of history for you to get out and discover

The name Harrow is derived from an Anglo-Saxon word, meaning temple or sacred grove.

With communities dating back to before the Domesday Book, Harrow has enjoyed a rich legacy of famous historical figures.

Follow the Harrow Heritage Trails and visit the key heritage sights of the borough. Discover Harrow's Hill and take in the fantastic views that inspired the young Lord Byron.

Go back to the land, and uncover Harrow's agricultural

past on a visit to Harrow Museum's medieval estate. While there, experience the eerie atmosphere of the 14th Century Headstone Manor, where monks are said to be heard chanting in the grounds.

As old as the Tower of London, visit Harrow's most famous landmark, the 900 year old St Mary's Church.

For more hidden gems, head to Stanmore, and wonder at the stunning Baroque interior of St Lawrence Church where Handel was once the resident organist.



Harrow Museum & Heritage Centre

Harrow Museum, Headstone Manor,
Pinner View, Harrow HA2 6PX

Harrow Museum is located in the beautiful historic buildings and grounds of Headstone Manor. The site consists of a Grade I listed manor house, Grade II listed timber barns, gardens and a moat. Harrow Museum has both permanent and temporary exhibitions. Entry is free. Tours of the site are available to the public at 3pm on Saturdays and Sundays between April and October, for a fee of £3. Private group tours can be booked in advance.

Opening hours:

Monday, Wednesday, Thursday and Friday:
12 noon-5pm

Saturday/Sunday: 10:30am-5pm
(Closes at dusk in winter)

Tel: 020 8861 2626
E-mail: harrow.museum@harrow.gov.uk
Website: www.harrow.gov.uk/museum
Tube: North Harrow/
Harrow & Wealdstone
Bus: H9, H10, H14

www.visitharrow.co.uk



St John the Evangelist Church

Rectory Lane, Stanmore HA7 4AQ

The exceptional St John's site contains two consecrated churches in a wonderful churchyard with many memorial stones and magnificent mature trees. The ruined brick church (1632), consecrated by Bishop Laud, is grade 2* listed and has historical and architectural importance.

An increase in population led to the construction of the handsome new Kentish Rag and Bath Stone building. Unique monuments including effigies to Sir John Wolstenholme and the Fourth Earl of Aberdeen, (Prime Minister from 1852 to 55), were both moved from the brick church to the new Bath Stone church. The graves of Sir John Wolstenholme, the Fourth Earl of Aberdeen, and W.S. Gilbert are all here.

The ruined 1632 church is open to the public on Saturdays between 2.30p.m. and 4.30p.m. from April to Sept with guides available on site. For the later Kentish Rag/Bath Stone church guided tours can be arranged by prior appointment.

Tel: 01923 840 675
Website: www.stjohnsstanmore.org.com
Tube: Stanmore
Bus: H12, 340



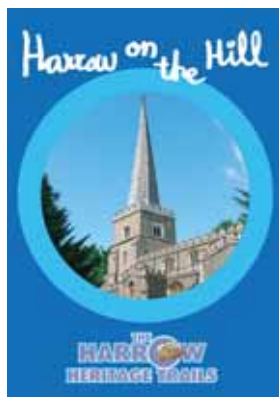
St Lawrence Church

Whitchurch Lane, Stanmore,
Edgware HA8 6RB

The unique appeal of the Grade 1 listed parish church of St Lawrence is the continental baroque interior. The walls feature paintings by French and Italian artists, and most of the woodwork is attributed to Grinling Gibbons. The organ, on which the composer Handel played, is still in use. The adjoining Mausoleum for the Duke of Chandos includes some fine, if ostentatious, stonework.

Guided tours are available on Sundays between 2-5pm in summer and 2-4pm in winter.

Tel: 020 8952 0019
Website: www.little-stanmore.org
Tube: Canons Park



Harrow Heritage Trails

The Fives Court, Moss Lane, Pinner
Middlesex HA5 3AG

Uncover the secrets of Harrow's past on the Harrow Heritage Trails. Choose from five family-friendly routes and discover the history of Harrow's buildings, parks and famous former residents. Special activities for children and practical advice on picnic spots, cafés, restaurants and wheelchair access. Pinner, Hatch End, Stanmore, Harrow on the Hill and Grim's Dyke. Duration of walks approximately 1-2 hours. (50p per leaflet).

Available from all libraries in Harrow.

Tel: 020 8866 0111
E-mail: martin.Joanne@freeuk.com



West House

Pinner Memorial Park, West End Lane, Pinner HA5 1AA

Harrow is currently working to create a museum to display Heath Robinson's original illustrations in West House in Pinner Memorial Park.

Donations to: The West House & Heath Robinson Trust, 179 Moss Lane, Pinner, Middx, HA5 3AL. Cheques should be made out to 'HRMT'.

New Friendly café "Daisies in the Park" opening April 2010. Grand Opening June 2010.

Discover the Hill Podcast

Discover the fascinating history of "The Hill" on an audio-guided tour of Harrow on the Hill. The podcast is free to download and use at your convenience.

Website: www.visitharrow.co.uk

Tube: Harrow on the Hill

www.visitharrow.co.uk



Harrow School Enterprises

5 High Street, Harrow on the Hill, Middlesex, HA1 3HP

Visit the historical and modern buildings of Harrow School, one of the country's oldest and most celebrated schools. Afternoon tea available upon request.

Harrow School Enterprises offers tours of the major historical buildings of the school for group bookings, with afternoon tea available on request. Tours include the school's famous original classroom dating back to 1570s, and are packed with interesting information about the history of the school.

Harrow School Enterprises also offers conference, event, wedding and banqueting services at the school. Why not host your special event in the beautiful surroundings of Harrow School for a day to remember?

Tel: 020 8426 4638

Fax: 020 8872 8043

E-mail: enterprise@harrowsschool.org.uk

Website: www.harrowsschoolenterprises.com

Tube: Harrow on the Hill



Take a breath of fresh air

Offering a green belt area equivalent to eight Hyde Parks, Harrow offers ample opportunity to relax, unwind and recharge the batteries. From wide-open countryside to historic parks, you don't have to travel far to leave the stress and strains of life behind.

Return to nature with a ramble through the woodlands, meadows and wetlands of the 60 acre Bentley Priory Nature Reserve. Take a stroll through the 18th Century Canons Park, previously home to the Duke of Chandos, one of England's richest men.

Explore further afield by bike or on foot using the London Loop, Capital Ring or National Cycle Network Itineraries (www.tfl.gov.uk).

Visit in summertime when our parks burst into life with annual shows, fêtes, fairs and events. Children can let off steam all year round at a wide variety of inclusive play facilities.

If it all gets too much, simply relax with a picnic and watch the sun set over London, far from the madding crowds.



Canons Park

Whitchurch Lane, Edgware, HA8 6RH

A Grade II listed Historic Landscape, Canons Park is a wonderful open space featuring green lawns studded with a stunning variety of trees and shrubs, bordered by a woodland walkway. The George V Memorial Garden is an oasis of calm. New facilities include an adventure playground and a cafe, which operates throughout spring and summer.

Email: contact@friendsofcanonspark.org.uk

Website: www.friendsofcanonspark.org.uk

Tube: Canons Park

Pinner Memorial Park

West End Lane, Pinner HA5 1AA

Discover 13 acres of open space featuring a peace garden, ornamental pond and a bowling green. A small aviary and a children's play area suitable for disabled children are also available. On-site car park and brass band concerts take place during selected Sundays in July and August.

Tel: 0845 225 2600

Website: www.harrow.gov.uk

Tube: Pinner

Harrow Recreation Ground

Hindes Road, Harrow

A community recreation ground with great facilities for all the family including three football pitches, four tennis courts, and a basketball court. The park also boasts a bowling green and a play area with equipment especially designed for disabled children.

Tel: 0845 225 2600

Website: www.harrow.gov.uk
[/www.hrua.co.uk](http://www.hrua.co.uk)

Tube: Harrow on the Hill



Bentley Priory Nature Reserve

North of the Uxbridge Road
in Harrow Weald

Bentley Priory Nature Reserve is a Site of Special Scientific Interest (SSSI), due to the importance of its grassland species. Covering an area of more than 60 hectares, it is also home to more than 60 species of birds. The Reserve contains woodlands and wild flower meadows. A private deer park is adjacent to the Nature Reserve. Open all year round.

Tel: 0845 225 2600
Website: www.visitharrow.co.uk
Tube: Harrow on the Hill (+258 bus)

Roxeth Recreation Ground

Eastcote Road, South Harrow HA2 8HN

Roxeth Recreation Ground contains a mixture of traditional play and sports facilities combined with the added attraction of a wild meadow – perfect for dog walking, exploring or picking blackberries. A further meadow has also been created to encourage bio-diversity and to serve as a tranquil setting to get away from it all.

Tel: 0845 225 2600
Website: www.harrow.gov.uk
Tube: South Harrow

Church Fields

Bessborough Road, Harrow

Situated just before St Mary's Church yard, Church Fields is an open space filled with grassland habitation. Perfect for summertime picnics, this area offers fantastic views across London and is also a popular spot for spectacular sunsets. The open space can be accessed via a track located opposite the Byron Memorial in St Mary's Churchyard.

Tel: 0845 225 2600
Website: www.harrow.gov.uk
Tube: Harrow on the Hill

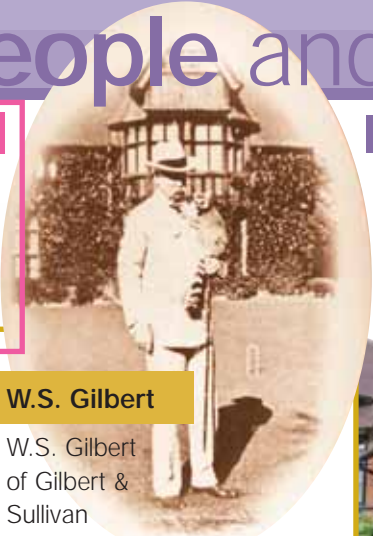
Famous people and

Image: Harrow Observer



Sir Elton John

Elton John was born on the 25 March 1947 and spent his childhood in Pinner. His birthplace in Pinner Hill Road is still standing.



W.S. Gilbert

W.S. Gilbert of Gilbert & Sullivan comic opera fame moved into Grim's Dyke house in 1890. He lived there for twenty-one years until his tragic death which occurred in the lake in the house grounds in 1911.



Heath Robinson

Britain's best-loved wartime cartoonist, Heath Robinson produced much of his best work while living in Pinner from 1908-1918. A blue plaque now marks the family home at 75 Moss Lane. A mural dedicated to him can be seen on West House in Pinner Memorial Park.

Mrs Beeton

Before Nigella Lawson, Mrs Beeton's *'Book of Household Management'* was the bible for aspiring domestic goddesses. Mrs Beeton lived at 2 Chandos Villas, from 1856 to 1862. Hatchets restaurant is now located close to where her home once stood.



film locations

Harrow School's famous Fourth Form Room provided the setting for magic lessons at Hogwarts in *Harry Potter & the Philosopher's Stone*. The School's Victorian setting has also provided the inspiration for *The Secret Garden*, *Pride & Prejudice*, *Lorna Doone* and *Ladies in Lavender*.



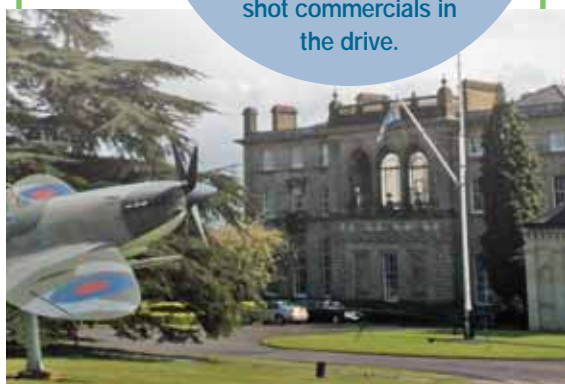
The Grim's Dyke Hotel has provided the backdrop for three Hammer House of Horror films. The hotel also appeared in the British hit film, *Sliding Doors*, as well as *Eastenders* wedding scenes and *Doctor Who* conventions.

Did you know?

Harrow's most famous film location is to be found in the unassuming back streets of Pinner. Such is the popularity of Albury Drive's '1970s suburban look' that Muller Rice, Mastercard, Esso, McVities and Heinz have all shot commercials in the drive.

Famous firsts for Harrow

- The game of squash originated at Harrow School in the 19th century
- The first Wimbledon men's lawn tennis champion was old Harrovian Spencer Gore in 1877
- Thomas Shipp Grimwade, of Sheepcote Farm, Harrow, patented the machinery that led to the creation of condensed milk in 1847
- The first motorcar accident involving the death of a passenger occurred on Grove Hill, Harrow on 25 February 1899



RAF Bentley Priory provided the setting for the 1969 film version of *The Battle of Britain*, starring Michael Caine and Laurence Olivier.

Harrow's Northwick Park hospital played a leading role as the backdrop for hospital scenes in the 1976 horror classic *The Omen*.



Go shopping

From arts and crafts to high street fashion, Harrow offers the very best in both modern convenience shopping and quirky specialist shops.

Shop till you drop under one roof at the St Ann's and St George's shopping centres, located two minutes walk from Harrow on the Hill train station and open seven days a week. Bag bargains galore at Primark, or explore one of the largest Monsoon stores in London. Recharge the batteries with a skinny latte, frothy cappuccino, or a

long, lazy lunch in Harrow town centre's range of coffee shops and international eateries.

For that individual gift, take a trip to Pinner's specialist boutiques and arty gift shops. Foodies will also enjoy Pinner's Sunday farmers' market.

Alternatively make a date to browse our visiting French market. Finally, spice it all up with the widest selection of exotic seasonings from Asia on South Harrow's Northolt Road.



St George's Shopping Centre

St Ann's Road, Harrow HA1 1HS

Make the most of your shopping and leisure experience by visiting St George's Shopping Centre where you can shop, eat, relax and be entertained.

Whether it's fashion, food and drink or a trip to the cinema, there is something for everyone. Open 7 days a week, St George's is a popular destination for the whole family.

Parking is easy in our 650-space award winning secure car park and Shopmobility can be found on the third floor.

Tel: 020 8424 2828

Website: www.stgeorgesshopping.co.uk

Tube: Harrow on the Hill



St Anns Shopping Centre

St Ann's Road, Harrow HA1 1AR

Located in the heart of Harrow, St Anns offers a choice of over 40 leading high street stores and food outlets including BHS, Marks & Spencer, Primark and Topshop.

Open 7 days a week, with over 940 parking spaces and close to main line train and bus services shopping could not be easier.

Whether it's getting those labels you love or simply taking a break in our 600 seater food court over a fresh cup of coffee. St Anns provides a pleasant shopping trip, conveniently placed under one roof.

St Anns closer than you think...

Tel: 020 8861 2282

Website: www.stannsshopping.co.uk

Tube: Harrow on the Hill



Pinner High Street

From wooden toys to wedding hats, Pinner High Street offers an eclectic range of specialist boutiques and craft shops. International restaurants, delicatessens and two historic pubs also line the street. Weekly farmers' market every Sunday morning.

Tube: Pinner

Pinner Farmers' Market

Queen's Head Car Park, High Street
Pinner HA5 5PJ

Choose from a small selection of seasonal produce every Sunday.

Tel: 020 8868 4607

Tube: Pinner



French Market

Stock up on the freshest olives, cheeses, cold meats and pastries at Harrow's visiting French market. Selected weekends in spring and winter.

Venues include:

St Ann's Road, Harrow Town Centre
and Bridge Street, Pinner

Tel: 020 8424 1295

Website: www.visitharrow.co.uk

Tube: Harrow on the Hill/ Pinner

Uxbridge Road, Hatch End

From antiques to cutting edge design – home makeover fans will love Hatch End's Uxbridge Road. Round the day off with a snack or meal in the area's enticing range of British and international eateries.

Website: www.hatchendtrade.com

Tube: Watford – London Euston
Overground service
(London Travelcard Zone 6)



Harrow Town Centre

Harrow Town Centre offers a compact and versatile shopping experience. Browse through Debenhams before heading to St Ann's Road where you will find all your High Street favourites including Next, Marks & Spencers, BHS and the Body Shop.

The St Ann's and St George's shopping centres offer a good retail selection leaving you to enjoy a stress free shopping experience. Once you've satisfied your shopping fever, sample a wide selection of restaurants, cafés or eateries or recharge with a fresh fruit smoothie. Finish the day with a trip to the cinema or treat yourself to a cutting edge hairstyle from some of the most stylish salons in town.

Website: www.harrow.gov.uk

Tube: Harrow on the Hill

Debenhams

Station Road, Harrow HA1 1NA

DEBENHAMS
STYLING THE NATION

Tel: 08445 616161

Website: www.debenhams.com

Tube: Harrow on the Hill/
Harrow and Wealdstone

TRAID

324D Station Road, Harrow HA1 2DX



reg. charity no. 297489

TRAID (Textile Recycling for Aid and International Development) is the leading fashion recycling charity encouraging more clothes recycling in the UK, and raising funds to fight global poverty at the same time. Buy quality second hand clothing from TRAIID Harrow, or donate your unwanted clothing to TRAIID through our network of over 900 recycling banks.

Tel: 020 8424 8198

E-mail: info@traid.org.uk

Website: www.traid.org.uk /
www.traidremade.com

Tube: Harrow on the Hill



That's entertainment

Be inspired by Harrow's unique range of entertainment

Beat the crowds and queues of theatreland and discover a whole world of entertainment here in Harrow. Head to the Harrow Arts Centre for a wide variety of performances from home grown talent through to international stars. Upstage the West End with a performance of Gilbert & Sullivan from Gilbert's own front room. Embark on a gourmet tour of our award-winning international restaurants.

Be mesmerised by the vibrant energy of a

Bollywood classic or indulge in the latest Hollywood blockbuster at Vue Cinema.

Improve your swing on a range of superb golfing facilities all within easy access of Central London.

If rain stops play, jump climb or swim the afternoon away at Harrow Leisure Centre. As a truly accessible borough, Harrow also boasts ASPIRE, the state-of-the-art rehabilitation centre for people with or without disabilities.



Grim's Dyke Opera Company

Grim's Dyke Hotel, Old Redding, Harrow Weald HA3 6SH

The temperate climate in England brings forth gardens of stunning beauty. With ten acres of restored Victorian garden, close to the M1, M25 and M40 motorways and 45 minutes from central London, this English Heritage registered garden was winner of the 2004 London in Bloom.

The Grim's Dyke Hotel has been the location for early Hammer films, BBC *The Saint*, *Dr. Who*, *Eastenders*, *Little Britain*, *Sliding Doors* and many more.

The association with W.S. Gilbert is marked by a year-round events

programme of Sunday Opera Dinners featuring fully costumed performances, Sunday Matinée Cream Teas, entertainment and garden tours. Murder Mystery Evenings, Wacky Weddings and Gourmet Evenings are also available.

Tel: 020 8385 3100

E-mail: reservations@grimsdyke.com

Website: www.grimsdyke.com

Tube: Harrow on the Hill/Stammore & taxi (approximately £6-£8 daytime)



Harrow Arts Centre

Harrow Arts Centre, Uxbridge Road, Hatch End HA5 4EA

Harrow Arts Centre offers a terrific variety of entertainment from both professional and community companies. Whether it's something for the family or a night out with friends, then you're sure to find the perfect event.

It is the only dedicated performing arts venue in the borough and works in close partnership with many local organisations and community groups to deliver an inclusive, educational and accessible programme of events and activities for the diverse community of Harrow.

There is a full range of arts courses and workshops for both children and adults held continuously throughout the year.



- Tel:** 020 8416 8989
E-mail: harrowartscentre@harrow.gov.uk
Website: www.harrowarts.com
Rail: London Overground from Euston to Hatch End
Tube: Harrow on the Hill or Pinner (Metropolitan Line)
Bus: H14 and H12
Road: A410 - limited free parking is available



ASPIRE

Wood Lane, Stanmore
HA7 4AP

The ASPIRE National Training Centre based in Stanmore, is a state-of-the-art leisure and fitness centre where the central philosophy is integration between disabled and non-disabled people.

The centre boasts a 25m pool with unique ramp access, a fully integrated fitness studio, a sports hall, Karten CTEC Centre and Internet café. There is a full programme of activities including fitness classes and aquafit. Membership is competitively priced with concessions for people with disabilities. You can use the facilities on pay as you play basis or we have a range of memberships available.

Tel: 020 8020 6710
E-mail: info@aspire.org.uk
website: www.aspire.org.uk
Tube: Stanmore



Harrow Leisure Centre

Christchurch Avenue, Wealdstone,
Harrow HA3 5BD

Centred in the heart of the Harrow community, your local Leisure Centre offers something for everyone. It has a range of different facilities including Harpers Gym, 2 indoor swimming pools, badminton courts, squash courts, table tennis, indoor football arena, indoor tennis court, basketball court, dance studio, children's play area, crèche, café, 2 venue halls and much more.

Tel: 020 8901 5980
Website: www.harpersfitness.co.uk
Tube: Harrow and Wealdstone



Playgolf Northwick Park

Watford Road, Harrow HA1 3TZ

Unique in the UK, Northwick Park's 9-hole 'Majors' course has been acclaimed as one of Europe's most memorable golf experiences. Each hole is an immaculate replica of a world famous golf hole – including the 12th and 16th at Augusta, home to The Masters.

With our own Playgolf Academy Coaches, and American Golf Superstore, the highly popular Blue Zenzer Restaurant, a spectacular floodlit two tier, 56 Bay Driving Range, the UK's only Baseball batting cages, an Adventure Golf course, full conference and function facilities and much more. Playgolf Northwick Park is a must-visit attraction for families, golfers and all others who come to the Harrow area.



Tel: 020 8864 2020
Email: info@northwickpark.com
Website: www.northwickpark.com
Tube: Northwick Park

www.visitharrow.co.uk



Golf in Harrow

Harrow's extensive green belt area is home to no less than three well established golf clubs all located within easy distance of central London.

Established in 1893, Stanmore Golf Club has a challenging 18 hole parkland course situated in a tranquil setting. Reduced green fee rates for visitors on Mondays and Fridays.

The Grim's Dyke Golf Club was opened by Sir William Gilbert in 1910 and has developed a reputation as one of the friendliest member golf clubs in the south of England. 5 and 7 day memberships are available for visitors.

Pinner Hill Golf Club is surrounded by woods and rolling parkland. The course's mature fairways will lift and challenge your skills. Special reduced green fee rates during week days.

Websites:

www.stanmoregolfclub.co.uk
www.club-noticeboard.co.uk/grimsdyke
www.pinnerhillgc.com

After Dark

Take a tour of the world's cuisine in Harrow's award-winning international restaurants.

Alternatively take in some live music or indulge in some old world charm in one of our historic pubs.

We have listed just a few to whet your appetite for more!

Best of British

Friends restaurant

11 High Street, Pinner, HA5 5PJ
AA rosette holder and Michelin rated for 13 years.

Indian Spice

Curry Mahal

372-374 Northolt Road, HA2 8ES
Winner of the Best Restaurant in Greater London and Suburbs, British Curry Awards 2005.

Afghan Adventure

MASA

24-26 Headstone Drive, Harrow HA3 5QH
Runner Up in Time Out Best Cheap Eats awards 2006.

Trinity Bar

378-380 Station Road Harrow, Middx, HA1 2DE
Free and bargain rate live music and DJ's every night.

The Castle

30 West Street Harrow, HA1 3EF
CAMRA rated favourite with beer garden, located on the Hill.

Queen's Head Pub

31 High Street, Pinner, HA5 5PJ
500 year old world charm on Pinner's historic High Street.



Free



Service

Loan of electric scooters, powerchairs & wheelchairs daily, or 2 weeks loan of a wheelchair for anyone with limited mobility - temporary or permanent, with registration

Open Monday - Friday 10am - 4pm
and first Saturday of the month

37 St George's Centre, Harrow

020 8427 1200

Email: harrowshopmo@tiscali.co.uk

We are a registered charity and rely on fund-raising. Would you like to help us by sponsoring a wheelchair, scooter, newsletter or leaflet?

All donations are much appreciated

Volunteers needed can you spare 3 hours a week?



Lemy School

Language Academy



Lemy School Language Academy offers language experience and multiculturalism all year round. We offer English Language Courses for groups or individuals, both during the academic school year (September to June) and during the summer holidays. All our programmes can be combined with a range of cultural, social and sporting experiences according to your needs.



Lemy School offers a stimulating environment that will motivate students to use communicative language in real life situations:

- Programmes at all levels, from complete beginner to advanced, which aim to build students' confidence through lively participation in discussions
- Excursions to London or other places of interest with Lemy School Team leaders
- Family accommodation, which provides a safe environment and more opportunity to practise the English language at its very root.
- Supervised social evenings with the participation of English youngsters: time to relax, have fun, dance and communicate in English with people of the same age. Our evenings give students the chance to socialise during their stay in the UK.



Apart from helping foreign students to learn English, Lemy School Language Academy also organizes the teaching of other languages. Please contact us for more details.

Lemy School Language Academy is here to help you organize your individual programme tailored to your needs. To get in touch:

Lemy School
Language Academy



0044 (0) 20 8424 89 61

0044 (0) 78 77 668 007

Website: www.lemyschool.com

Email: info@lemyschool.com

250 reasons to visit Harrow



250 shops, restaurants and leisure facilities

Easy to reach by bus, train or tube ■ Over 3000 parking spaces

St George's
SHOPPING & LEISURE HARROW

Visit
Harrow





Flying:

Heathrow airport is the main gateway into north west London and provides direct links from top international and UK destinations.

Connections to Harrow from Stansted and Luton airports can be found on the Metropolitan line at both King's Cross St Pancras and Liverpool Street for the Stansted Express.

Top tip: The 140 bus provides a direct link between Heathrow Airport and Harrow on the Hill bus station for the bargain price of £2.00* each way and from £1.20 if using your Oyster Card! (approximate journey time 60 minutes).
* price as of March 2010

National Rail:

London overground trains currently serve Harrow & Wealdstone, Hatch End and Headstone Lane stations. Metro and fast County Trains connect Harrow & Wealdstone station to London Euston

(approx 15 mins). In addition Watford Junction is easily accessible from Harrow & Wealdstone and provides an interchange with West Coast Services to Birmingham, Manchester, Liverpool and Scotland.

Chiltern Railways currently serve Harrow on the Hill, Sudbury Hill Harrow and Northolt Park stations. A fast service connects Harrow on the Hill station to London Marylebone. Trains on the Harrow on the Hill branch run to the outlying areas of Rickmansworth and Amersham en route to Aylesbury. Trains on the Sudbury Hill Harrow branch run to High Wycombe and beyond providing interchanging opportunities for trains to Birmingham.

Underground:

Located in London Travelcard Zone 5, Harrow has easy access into central London via London Underground.

The Metropolitan line serves Harrow on the Hill, North Harrow, Pinner, West Harrow

and Rayners Lane stations. Key London stations on this line include Baker Street, King's Cross and Liverpool Street.

The Bakerloo line serves Kenton and Harrow & Wealdstone stations and provides a direct route to Paddington (Heathrow Express), Oxford Circus, Charing Cross and Waterloo (Eurostar link).

The Jubilee line starts from Stanmore and serves Canons Park and Queensbury stations. Key stations on the route include Wembley Park, Baker Street, Waterloo and Canary Wharf.

The Piccadilly line serves Rayners Lane, South Harrow and Sudbury Hill. It also provides a connection from Acton Town to Heathrow Airport.

Car:

Harrow is within easy reach of five motorways, providing easy access routes from all over the country. The M1 (for the Midlands and the North) can be reached in 10 minutes from central Harrow. The M25 (London Orbital and road link to Heathrow Airport), M40 (for Birmingham and the West Country), M4 (for Bristol and Wales) and the M3 (for Portsmouth and Southampton) can all be reached within approximately 30 minutes.

Buses:

Harrow's bus station is conveniently located next to Harrow on the Hill train station in Harrow town centre. Buses are frequent throughout the borough with regular services to Heathrow, Edgware, Wembley, Golders Green, Watford and Brent Cross. Night buses run to

Harrow and Wealdstone station from Trafalgar Square.

Taxis: a taxi rank can be found outside Harrow on the Hill train station with licensed taxis available around the clock.

Tickets

TfL offers a range of cash and Oyster tickets within the Greater London area for use on Rail, Underground, the Docklands Light Railway, bus and tram services. You can read about the different ticket types and pricing options on offer by visiting: www.tfl.gov.uk, or by visiting any London station or calling 020 7222 5600.

In general, cash tickets are more expensive than using an Oyster Card. Travelcards can be purchased for 1, 3 or 7 days and can be used for unlimited travel on the London underground, buses, trams, the Docklands Light Railway and National Rail within designated zones. After 9.30am, off-peak travelcards can be purchased at a significant reduction.

Travel information

To access the rail journey planner or get timetable information visit: www.nationalrail.co.uk or call national rail enquiries on: 08457 48 49 50 (from abroad +44(0)20 7278 5240).

For information on the London Underground visit: www.tfl.gov.uk/tube or call the 24 hour travel information line on 020 7222 1234.

To find the quickest route to Harrow via bus, tube or rail, please consult: <http://journeyplanner.tfl.gov.uk>.

Please turn over
for map of Harrow.





Grim's Dyke Annual Open Day

Bank Holiday Monday 31st May 2010

Guided Tours of House and Grounds
BBQ and Refreshments · Culinary Demonstrations
Clotted Cream Teas · Magic Shows · Pony Rides
Face Painting · Garden Games · Fire Engine
The Grim's Dyke Brass Band · Morris Dancers
Gardener's Surgery

Stalls:

Plants, Arts, Jewellery, Hand Bags & Accessories,
Cakes & Brownies, Relishes & Sauces,
Music & DVD's, Wine Tasting,
Oil Paintings, Quilts & Crafts
and lots more...

**Bring
your friends
& family
and enjoy!**



Admission: Adults £1 - Children Under 12 Free



Disabled badge holder parking only. Additional Parking at
Harrow View Point and Jaques Amands on Clamp Hill

GRIM'S DYKE HOTEL Old Redding,
Harrow Weald, Middlesex HA3 6SH

Telephone: **020 8385 3100**
Email: reservations@grimsdyke.com